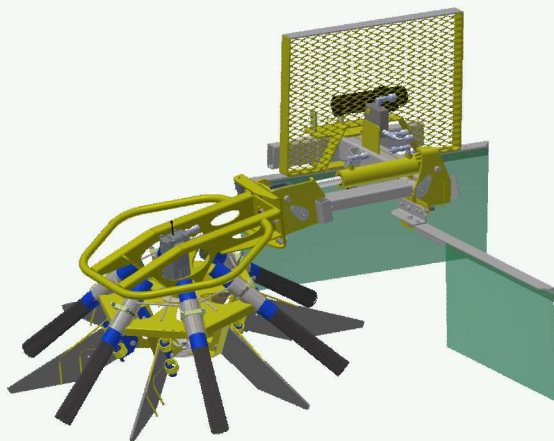




Sadie

Single Sided Front Mount

Vineyard & Orchard Rubber Flap, Nylon Bristles & Spring Tynes



Orchard Sadie

Orchard SADIE has a larger head enabling it to sweep wider paths.

Crendon Machinery have made a new design Sadie with 50% more nylon bristles, each bristle is twice the diameter as before. Now comes with spring tynes for heavy sweeping out of grass. Hydraulic motors are stronger than before having two taper bearings & tapered output shaft.

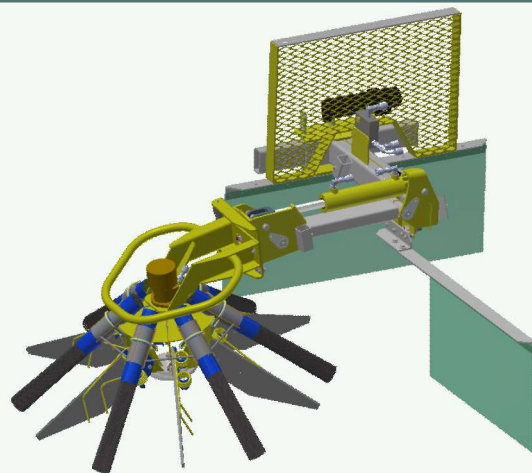


Both SADIEs come with rubber flaps, nylon bristles and spring tynes. All three can be used at any time or in any combination.

The new design head has 6 large bundles of nylon bristles (50% more than before).

The rubber flaps are hard wearing and should always be tried first.

If you have irrigation lines on the ground the long nylon bristles are required. These bristles should last approx 20-50ha.



Vineyard Sadie

Vineyard SADIE has a smaller head.

SADIE eliminates the need for hand raking and has proven to be important in the control of Black Spot & Weevils.



Orchard SADIE Sweeping with rubber flaps (old model)

One hydraulic ram raises and lowers both the arm and angles the head.

To protect the SADIE frame (should it hit a solid object) a shear bolt will break, allowing the head to swing back. A hydraulic flow control valve regulates the head rotation speed. With this model a mulcher or mower on the tractor's 3PL allows sweeping and mulching of prunings at the same time.

This SADIE is mounted onto the tractor's front bumper bar (not included) for best visibility and driver control. This bumper bar is supplied (100x50x6 RHS steel tube) but without brackets as they need to be made to suit your tractor and welded to the RHS. The SADIE clips over this and is held on with wedges.



Vineyard SADIE Sweeping with Nylon Bristles (old model)



Travelling position (old model)

Manufacturers and designers of quality horticultural equipment

Phone : 1300 761 922
E-mail: info@crendon.com.au
www.crendon.com.au



- * **SQUIRREL** Elevating platforms
- * **NetWizz** Bird netting applicator
- * **BIN RUNNER** Bin Trailers
- * **OliNet** harvesting aid for olives etc



Sadie

Double Sided Front Mount Std & Narrow

Vineyard Rubber Flap & Spring Tynes

Vineyard SADIE (Front Mount) Suitable for medium to large vineyards and for contractors. It now has adjustable spring tynes.

Now in Std & Narrow width models

It is a vine cane sweeper which clears prunings and debris from under vines even in grass, improving hygiene. It also assists in giving clean ground for pre-emergence herbicide spraying.

The All New SADIE comes complete with a steel mesh guard to protect the tractor from flying debris. Also comes with a heavy duty deflector which fits beneath the SADIE's mesh guard protecting the bottom of the tractor.

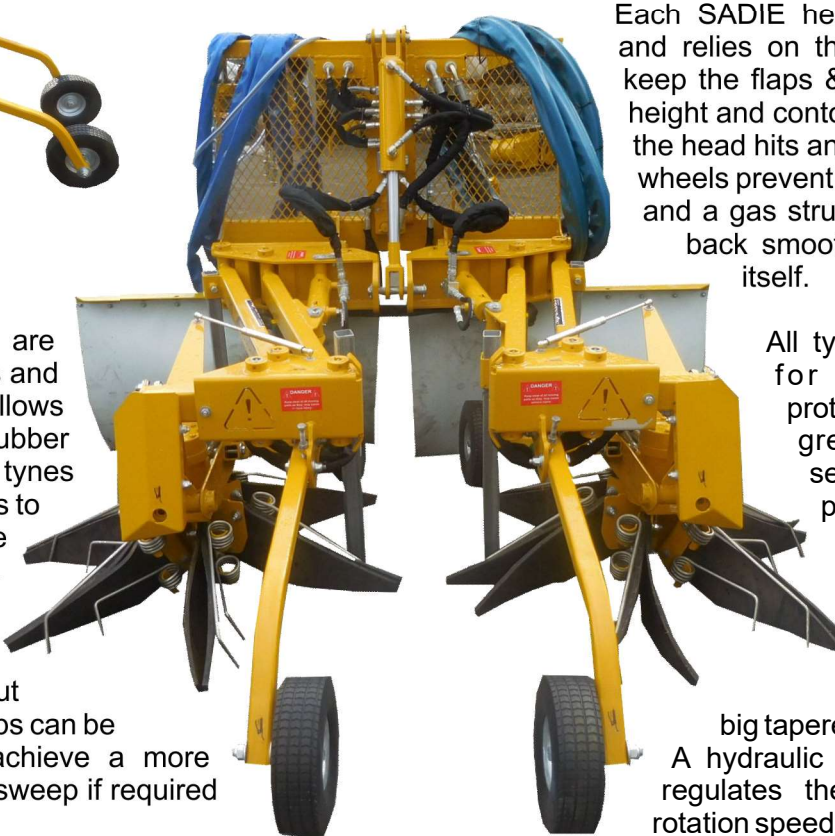


Width setting from 1.5m to 4m is achieved by two synchronised hydraulic rams. Another hydraulic ram raises the heads in any width setting.



SADIE's Ø8mm spring tynes are bolted in front of the rubber flaps and are adjustable in height. This allows the tyne to be lower than the rubber flap to allow vigorous raking. The tynes are not as long as the rubber flaps to prevent any damage to the vine trunk. You can use with or without tynes to achieve the best results.

SADIE's rubber flaps are hard wearing (last approx. 200 ha) but do not damage the vines. Two flaps can be doubled up and adjusted to achieve a more vigorous sweep or singly a light sweep if required for young vines.



Each SADIE head is independent and relies on the three wheels to keep the flaps & tynes at the right height and contour of the ground. If the head hits an obstacle the guide wheels prevent damage to the vine and a gas strut allows it to swing back smoothly and reposition itself.

All tyres are solid filled for life long tyre protection. Rims have greased hubs with sealed bearings and protector shields.

Hydraulic motors are stronger than before having two taper bearings & big tapered output shaft.

A hydraulic flow control valve regulates the maximum head rotation speed.

Manufacturers and designers of quality horticultural equipment

Phone : 1300 761 922
E-mail: info@crendon.com.au
www.crendon.com.au



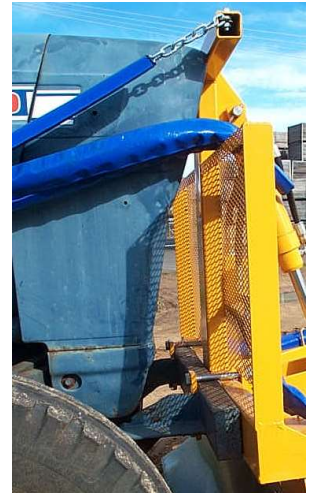
- * **SQUIRREL** Elevating platforms
- * **NetWizz** Bird netting applicator
- * **BIN RUNNER** Bin Trailers
- * **OliNet** harvesting aid for olives etc



Sadie raised at mid width setting .



This SADIE is mounted onto the tractor's front bumper bar (not included). The bumper bar is supplied (100x50x6 RHS steel tube) but without brackets as these need to be made to suit the tractor and welded to the RHS. The SADIE clips over this and is held on with bolts. There is a tension chain with bracket to be mid-mounted each side (supplied).



Sadie Specifications

Sadie Models	Front mount Single Sided Vineyard	Front mount Single Sided Orchard	Front mount Double Sided Vineyard Narrow	Front mount Double Sided Vineyard STD
Ground Speed (km/hr)	3 to 7	3 to 7	3 to 7	3 to 7
Sweeping row spacing	2.5m - 5m	3m - 7m	1.5m - 3.5m	2.3m - 4m
Sweeping path size	0.7m	1.1m	2 x 0.5m	2 x 0.7m
Number of rubber flaps	6	6	24	24
Number of Spring Tines	6	6	12	12
Rubber flap length	0.54m	0.54m longer length is available up to 1.5m for wide sweeping	0.43m & 0.33m	0.54m
Number of nylon bristles	6 x Ø60 bundles	6 x Ø60 bundles	not available	not available
Hydraulic outlets required	Two Controls, 4 outlets 30 - 60 lpm 2,200 psi	Two Controls, 4 outlets 30 - 60 lpm 2,200 psi	Three Controls, 6 outlets 30 - 60 lpm 2,200 psi	Three Controls, 6 outlets 30 - 60 lpm 2,200 psi
Dimensions Total Machine when stacked for long distance transport (m); Width / length / height	1.17 W, / 1.17 L / 0.8 H	1.17 W, / 1.17 L / 0.8 H	1.2 W, / 1.2 L / 1.5 H	1.2 W, / 1.2 L / 1.5 H
Total weight Approx. (kg)	200	220	420	430

Available Through
Your Local Dealer

Disclaimer : The pictures and information in this brochure are a guide only. Specifications are subject to change without notice and without liability expressed or implied.