



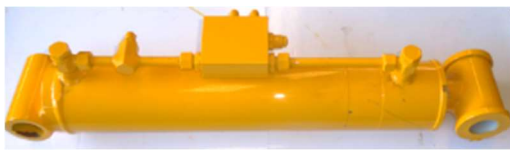
Crendon Nominees Pty Ltd A/T/F
the Fry Family Trust T/A: Crendon Machinery
ACN 009 135 335 ABN 53 913 250 628

2 Ramsay Tce
PO Box 95
DONNYBROOK WA 6239

Ph: (08) 9731 1502
Toll Free: 1300 761 922
Fax: (08) 9731 1657
Email: info@crendon.com.au
www.crendon.com.au

Manufacturers and Designers of Horticultural and Viticultural Equipment
* SQUIRREL self propelled elevating platforms * SADIE vineyard & orchard sweepers * NETWIZZ netting retriever

SQUIRREL Parts Catalogue #5 Hydraulic Rams & Seals.

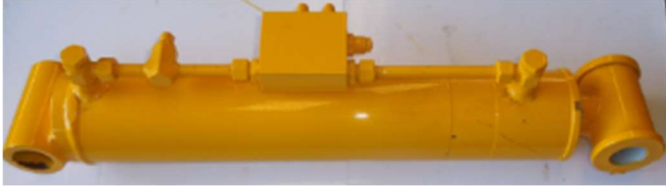


SQUIRREL Parts Catalogue # 5

Page

Hydraulic Rams – (Metric) 358, 508, 558,678, 708 & 801.....	2
Hydraulic Rams – (imperial) 355, 505, 655, 805,	11
Hydraulic Rams – Baker, Moore.....	13

Hydraulic Rams 90x50 – for 008 Squirrels 358, 508, 538, 678, 708 & 818, nylon wear rings, double seals at neck bush and push rod, top industrial quality with tube mounted lock out valves.



Ram 610mm travel, 90mm piston, 50mm pushrod, bottom boss 115mm long with $\varnothing 40.5$ bottom hole, top boss 117mm long with $\varnothing 49.2$ mm bore, with 2 x $\varnothing 40$ mm HDPE bushes, ED port, double pilot check valve (Boom lift ram 558, 678, 708 & 818) – **RCHM90/50-610DP**

Ram 410mm travel, 90mm piston, 50mm pushrod, bottom boss 115mm long with 40.5 bottom hole, top boss 117mm long with 50mm, with 2 x $\varnothing 40$ mm HDPE bushes, ED port, single over centre valve (Boom lift ram 358, 508) – **RCHM90/50-410SOC**

Hydraulic Rams Metric 90x50 seal kits for 008 Squirrels



Seal kit for Seal kit for 90 x 50, Has small banjo fittings on ram, no holes or slots in neck bush, no holes or slots in piston (boom lift ram 358, 508, 558, 678, 708 & 818) (up to mid 2021) – **RCSKEK20-90X50**



Seal kit for 90 x 50, has big banjo fittings, Single over centre valve, 4 slots in neck bush (boom lift ram 358, 508, 558, 678, 708 & 818) (from mid 2021) – **RMSKEK21-90X50 \$152.98 + GST**

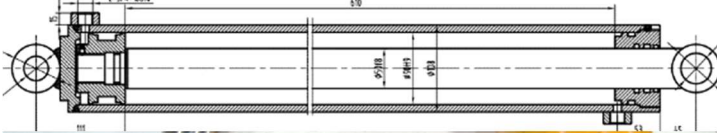


Seal kit for 90 x 50 (boom lift ram 358, 508, 558, 678, 708 & 818) (2019)– **RCHM90/50DPCVSK \$147.10 + GST**

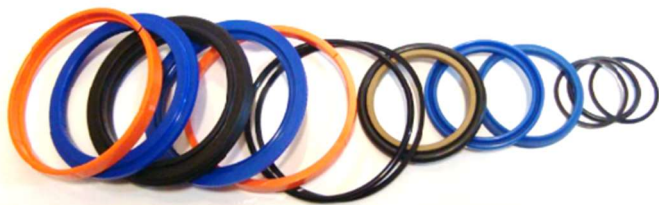


Seal kit for stroke (406, 610 & 762), 90mm piston, 50mm pushrod (Boom ram 355, 505, 536, 655, 656, 805 from 2016) – **RCHMSK90x50 \$211.49 + GST**

**Hydraulic Rams Shandong #1
90x50 – for 006 Squirrels 536, 656
& 806, boom lift ram.** Used on Crendon made
Squirrels from 2010



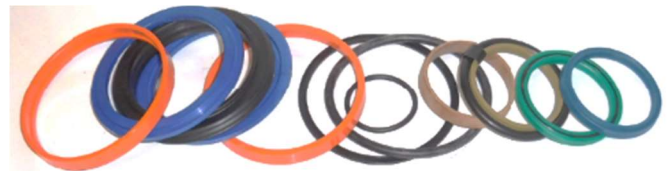
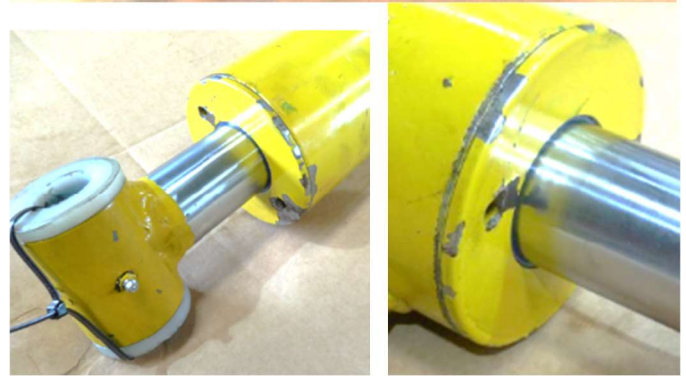
The neck bush recess fully inside the barrel, grub screws on neck bush & piston, neck bush has 2 holes in



Shandong #1 parts (from 2021)

Seal kit for 900mm piston, 50mm pushrod, ram has 3/4UNO ports, – **RCHMSK90x50***

**Hydraulic Rams Shandong #3 90x50
– for 006 Squirrels 536, 656 & 806,
boom lift ram.** Used on Crendon made Squirrels from
2010



Shandong #3 parts (from 2021)

Seal kit for 900mm piston, 50mm pushrod, ram has 3/4UNO ports, – **RCHMSK90x50*3**

**Hydraulic Rams Metric 50 push rod
Wiper seals**



Push rod wiper & seal for 50mm push rod, 90 piston ram 50x58x6 (Lift ram 358, 508, 558, 678, 818) (from 2019 to mid-2021) – **OSW50x58x6 \$26.68 + GST**

Hydraulic Rams Metric Ø 50 push rod Neck gland seals



Metric Push rod high pressure BA seal with O-ring energiser for 50mm push rod, 90 piston ram 50x65x12 – **PRSS50x65x12** \$38.10 + GST

Hydraulic Rams Metric Ø 90 Piston seals



Metric Push rod high pressure BA seal with O-ring energiser for 50mm push rod, 90 piston ram 50x65x10 – **PRSS50x65x10** \$..... + GST



Metric Push rod high pressure BA seal with O-ring energiser for 50mm push rod, 90 piston ram 50x60x10 – **PRSS50x60x10** \$30.35 + GST

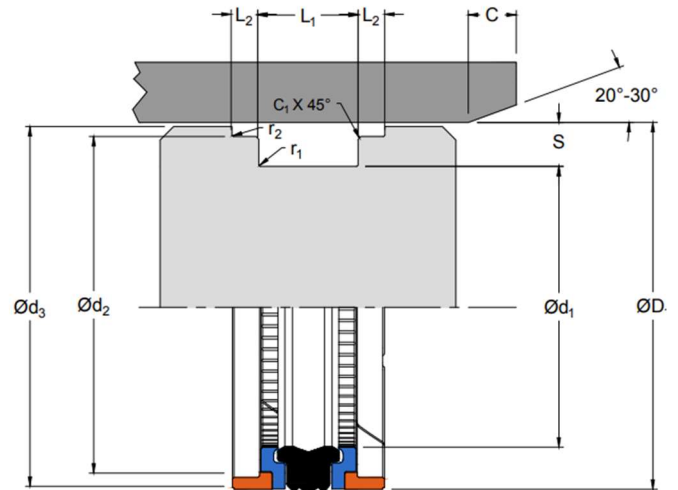


Metric Push rod high pressure BA seal with O-ring energiser for 50mm push rod, 90 piston ram 50x60x6 – **PRSS50x60x6** \$23.20 + GST



Push rod high pressure seal for 50mm push rod, 90 piston ram 50x65x10 (Lift ram 358, 508, 558, 678, 818) (from 2019 to mid-2021) – **OPS50x65x10** \$..... + GST

Push rod high pressure seal for 50mm push rod, 90 piston ram 50x65x9 (Lift ram 358, 508, 558, 678, 818) (from 2019 to mid-2021) – **OPS50x65x9** \$..... + GST



ØD = 90, Ød1 = 70, L1 = 22, L2 = 7, D2 = 85

Halite Piston seal, 90mm OD x 30 x 16.4 x 6.35 x 35.4, 5 parts – **RPS90x70x22.4**

Hydraulic Rams Tube Mounted Valving for 008 Squirrels



Ram Tube assembly; HD banjo Ø12mm tube ends, Ø 12mm tube, compression Ø 12mm tube end, single over centre valve block, 10:1 pilot ratio, compression Ø 12mm tube end, Ø 12mm tube with ED outlet 9/16 UNF, HD banjo Ø12mm tube ends (Boom lift ram all 008 from 2021) – **RCSOCPR10**.....



HD banjo with compression Ø12mm tube ends; **RCSOCPR10**.....



compression Ø 12mm tube olive & nut; **RCSOCPR10**.....



Ø 12mm tube x 3mm wall x 372mm long; **RCSOCPR10**.....



Ø 12mm tube x 3mm wall x 150mm long with emergency descent outlet 9/16 UNF, **RCSOCPR10**.....

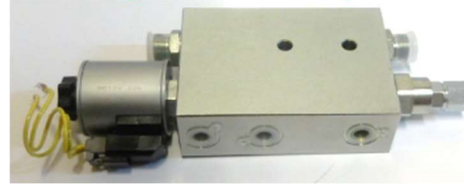


Ram single over centre valve block, 10:1 pilot ratio, 12mm tube to rams, 9/16" UNO ports, EK, (no emergency descent) (Boom lift ram all 008 from 2021 - 2022) – **RCSOCPR101BEK21**



Replacement cartridge valve Ram single over centre valve cartridge, 10:1 pilot ratio, LCBCH-LJN, EK (Boom lift ram all 008 from 2021 - 2022) – **RCSOCPR101CEK21**

Hydraulic Rams Tube Mounted Valving for 008 Squirrels



Ram single over centre valve 10:1 pilot ratio & Emergency descent valve 12V, Deutsch plug coil 12mm tube to rams, 9/16" UNO ports (Boom lift ram all 008 from MID 2023) – **RCSOCEDVCANHM22**



Emergency descent valve 12V, Deutsch plug cartridge (Boom lift ram all 008 from MID 2023) – **RCSOCEDVNHM22**



Emergency descent valve 12V, Coil with Deutsch plug (Boom lift ram all 008 from MID 2023) – **RCSOCEDVPNHM22**



Emergency descent valve 12V, Deutsch plug cartridge, mechanical override for emergency decent, takes coil Ø36 od x 13.3 id x 36mm high (Boom lift ram all 008 from start 2024) – **RCSOCEDV**.....



Emergency descent 12V, Deutsch plug coil, Ø36 od x 13.3 id x 36mm high, (Boom lift ram all 008 from start 2024) – **RCSOCEDV**.....



Emergency descent 12V, pole, takes coil, Ø36 od x 13.3 id x 36mm high, (Boom lift ram all 008 from start 2024) – **RCSOCEDV**.....



Double pilot operated check valve 9/16UNO ports– Hydraulic tube to mount on rams, pilot ratio 8:1 **VDPCV8:1 9/16**

Double pilot operated check valve 9/16UNO ports– Hydraulic tube to mount on rams, pilot ratio 4:1 **VDPCV4:1 9/16**

Hydraulic Rams Metric 50x25 seal kits for 008 Squirrels from mid-2011



Seal kit for 50 x 25 for above ram, neck boss has 4x slots on outside to undo, ram has large banjo fitting on with double pilot check valve (bin forks ram 558, 678 & 818) (from mid-2021) – **RMSKEK21-50X25** \$113.76 +

50x25 seal kits for 008 Squirrels 2019 – mid 2011



Seal kit for 50 x 25 for above ram, neck boss has 2x drilled holes in end to undo, ram has small banjo fitting on with double pilot check valve (bin forks ram 558, 678 & 818) (2018 to -2019) – **RCHM50/25DPCVSK**

50x25 seal kits for 008 Squirrels



Seal kit for 40 x 20 (Cage side swing ram 358, 508,558, 678, 708 & 818) – **RCSKEK20-40X20** \$126.00

Ram 250mm travel, 50mm piston, 25mm pushrod, bottom boss 65mm long with 20.3 bottom hole, top boss 65mm long with 20.5mm, double pilot check valve (Bin forks ram 558, 678 & 818) – **RCHM50/25-250DP**



Seal kit for 50 x 25 (Bin forks ram, crab steer 508,558, 678, 708 & 818) (from 2019 to mid-2021) – **RCSKEK20-50X25** \$122.50

Hydraulic Rams Parts – Metric Dantal parts (2018 on)



Seal kit for 254mm stroke, 50mm piston, 25mm pushrod, (bin forks ram 2012 on) – **RM50x25SK**



Metric Push rod high pressure BA seal with O-ring energiser for 25mm push rod, 50 piston ram 25x35x8 – **PRSS25x35x8** \$27.45 + GST



Metric Push rod high pressure BA seal with O-ring energiser for 25mm push rod, 50 piston ram 25x33x5.6 – **PRSS25x33x5.6** \$..... + GST

Hydraulic Rams 40x20 (Side Swing Rams)



Ram 280mm travel, 40mm piston, 20mm pushrod, boss both ends with $\text{\O}3/4$ " hole, double BA energized push rod seals, stainless steel push rod, 9/16" UNO ports – (All Side Swing Ram from 1995 to 2014) – **RM280x40x20x34E**



Ram 280mm travel, 40mm piston, 20mm pushrod, boss both ends with $\text{\O}20$ mm hole, double BA energized push rod seals, stainless steel push rod, 9/16" UNO ports – (All Side Swing Ram from 2014-2017) – **RM280x40x20x20E**



Ram 280mm travel, 40mm piston, 20mm pushrod, bottom boss 52mm long with 20.3 bottom hole, top boss 40mm long with 30mm with 2 x $\text{\O}20$ mm HDPE bushes double pilot check valve, heavy duty banjo fittings, double BA energized push rod seals, stainless steel push rod, 9/16" UNO ports (Cage side swing ram 358, 508,558, 678, 708 & 818) – **RCHM40/20-280DP** \$..... + GST



Seal kit for 40 x 20, neck boss has 4x slots on outside to undo, ram has large banjo fitting on with double pilot check valve (Cage side swing ram 358, 508,558, 678, 708 & 818) (from mid-2021) this seal kit fit all the above rams – **RMSKEK21-40X20** \$126.00 + GST

40x20 for 008 Squirrels Cage side swing ram 358, 508,558, 678, 708 & 818 from 2019 - mid 2021



Ram 280mm travel, 40mm piston, 20mm pushrod, bottom boss 52mm long with 20.3 bottom hole, top boss 40mm long with 30mm with 2 x $\text{\O}20$ mm HDPE bushes double pilot check valve, small banjo fittings (Cage side swing ram 358, 508,558, 678, 708 & 818) – **RCHM40/20-280DP** \$439.66 + GST



Seal kit for 40 x 20, for above ram, neck boss has no slots, ram has small banjo fitting on with double pilot check valve (Cage side swing ram 358, 508,558, 678, 708 & 818) (2018 to -2020) – **RCHM40/20DPCVSK** \$119.00 + GST

40x20 for 006 & 005 Side Swing Ram from Shandong # 1, 9/16 UNO ports (2015- 2017)



280mm stroke, 40mm piston, 20mm pushrod, ram has 9/16UNO ports



Shandong #1 parts (2015- 2017)

Seal kit for 280mm stroke, 40mm piston, 20mm push rod, ram has 9/16UNO ports, grub screws on neck bush & piston, neck bush has 2 notches in- **RCHMSK40x20**

40x20 for 006 & 005 Side Swing Ram from Shandong # 2, 9/16 UNO ports (2015- 2017)



Shandong #2 parts (2015- 2017)

Seal kit for 280mm stroke, 40mm piston, 20mm push rod, ram has 9/16UNO ports, grub screws on the piston, neck bush has no notches or holes- **RCHMSK40x20SH-2**
\$..... + GST

40x20 for 006 & 005 Side Swing Ram from EuroKing 9/16 UNO ports (2015- 2017)



Ram 280mm travel, 40mm piston, 20mm pushrod, boss both ends with 20mm hole – (All Side Swing Ram from 2014) – **RCHM280x40x20EK \$304.88 + GST**



EuroKing parts (2015- 2017)

Seal kit for 280mm stroke, 40mm piston, 20mm push rod, ram, has 9/16UNO ports, 2 drilled holes in end of neck bush, for late 006 models – **RCHMSK40x20EK**

Hydraulic Rams Parts – Metric



Seal kit for 205mm stroke, 63mm piston, 32mm pushrod – **RCHMSK63x32**

Separate push rod seals for 40x20 Side Swing Rams



Metric Push rod high pressure BA seal with O-ring energiser for 20mm push rod, 40 piston ram 20x30x8 – **PRSS20x30x8 \$27.85 + GST**

Metric Push rod high pressure BA seal with O-ring energiser for 20mm push rod, 40 piston ram 20x28x8 – **PRSS20x28x8 \$24.85 + GST**

Metric Push rod high pressure BA seal with O-ring energiser for 20mm push rod, 40 piston ram 20x28x5 – **PRSS20x28x5 \$..... + GST**

Metric Push rod high pressure BA seal with O-ring energiser for 20mm push rod, 40 piston ram 20x26x8 – **PRSS20x26x8 \$23.20 + GST**

Metric Push rod high pressure BA seal with O-ring energiser for 20mm push rod, 40 piston ram 20x26x8 – **PRSS20x26x5 \$..... + GST**



Push rod high pressure seal for 20mm push rod, ram 20x28x5.7 – **RPRS20X28X5.7 \$..... + GST**



Push rod high pressure seal & wear ring for 20mm push rod, ram 20x31x4.2 – **RPRS20X30.7X4.2 \$..... + GST**



Push rod Wiper seal for 20mm push rod, ram 20 x 28 x 4-5mm – **RWS20X28X4CH \$..... + GST**

Push rod Wiper seal for 20mm push rod, ram 20x28.6x5.3mm – **RWS20X28.6X5.3CH \$..... + GST**

Push rod wear ring for Ø 20mm Side swing ram



Push rod wear ring for 20mm push rod, ram 20x24x9.3mm – **RSWR20X24X9.3CH \$..... + GST**

Separate seals for 40x20 Side Swing Rams

Neck Gland Seal for Ø 40mm piston Side swing ram



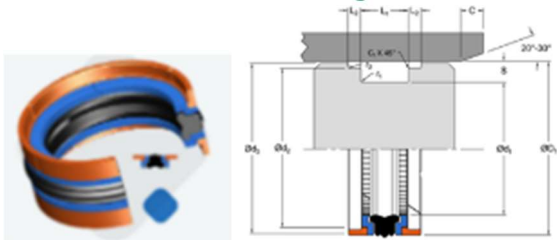
Neck bush O-ring for 40mm piston ram, 34 id x 3 section & curved back up– **RO+B34X3CH** \$..... + GST

Push rod to piston Seal for Side swing ram



Neck bush O-ring for 40mm piston ram, 11 id x 2.5 section & curved back up– **RO+B11X2.5CH** \$..... + GST

Piston Seal for Side swing ram



D1 = 40, d1 = 30, L1 = 16.4, L2 = 6.35, D2 = 35.4
Piston seal, 40mm OD x 30 x 16.4 x 6.35 x 35.4, 5 parts – **RPS40x30x16.4CH**

D1 = 40, d1 = 26, L1 = 14.3, L2 = 2.5, D2 = 36
Piston seal, 40mm OD x 26 x 14.4 x 2.5 x 36, 5 parts – **RPS40x26x14.3CH**

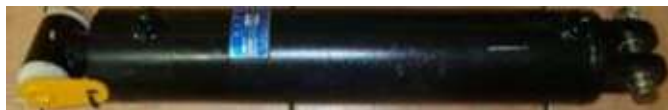


Double pilot check valve ¼” kit and hose for side swing of bin forks ram, 9/16 JIC, stops ram creeping – **RDPCV14KAH***

Hydraulic Rams – imperial Tianton, & metric Shandong, 7,000 psi seals, nylon wear rings, industrial quality



Ram 205mm travel, 65mm piston, 32mm push rod, 1" pins (3.8m SS) – **RCH205X65X32**



Ram 406mm travel, 90mm piston, 50mm pushrod, bottom 30mm with boss to 1" with bottom pin, Top 95mm long x 38mm hole, includes HDPE bushers to 1", with top pin (pre 2016, 355 & 505) – **XRB16X3.5COMP** \$809.00+ GST



Ram 18" travel, 3" piston, 1 1/2" push rod, 1" pins painted with 4 x 3/4" UNO ports (for 3.8m square frame, old chain drive) – **RCHM18x3x1.5*** \$509.00+ GST



Ram 280mm travel, 40mm piston, 20mm pushrod, boss both ends with 20mm hole – (All Side Swing Ram from 2014) – **RCHM280x40x20** \$224.86+ GST

Hydraulic Rams – imperial Tianton, & metric Shandong, 7,000 psi seals, nylon wear rings, industrial quality



Ram 406mm travel, 90mm piston, 50mm pushrod, bottom 30mm pin, top boss 78mm long with 38.15mm hole, no HDPE bushes fitted (355 & 505 from 2016) – **RCHM406x90x50** \$577.18 + GST

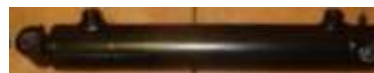
Ram 24" travel, 3.5" piston, 2" pushrod, 1" bottom pin, top boss 95mm long with 32mm hole, no HDPE bushes fitted (536 & 656 pre mid 2015) – **RCH24X3.5X2**

Ram 30" travel, 3.5" piston, 2" pushrod, 1" bottom pin, top boss 95mm long with 32mm hole, no HDPE bushes fitted (pre-2016, 655 & 805)– **RCH30X3.5X2**

Ram 762mm travel, 90mm piston, 50mm pushrod, bottom 30mm pin, top boss 78mm long with 38.15mm hole, no HDPE bushes fitted (655 & 805 from 2016) – **RCH762x90x50**



Ram 254mm travel, 50mm piston, 25mm push rod, 40mm, boss both ends with 20.5mm hole (Side Swing Ram up to mid-2014 & all Bin Forks ram) - **RCHM10x50x25** \$230.09 + GST



Ram "Dantal" 254mm travel, 50mm piston, 25mm push rod, 40mm, boss both ends with 20.5mm hole (Bin Forks from 2018) – **RM50x25x254**



Ram 610mm travel, 90mm piston, 50mm pushrod, bottom boss 95mm long with 30.5 bottom hole, top boss 78mm long with 38.1mm hole, 7/8UNO ports at opposite sides, no HDPE bushes fitted (536 & 656 after mid 2015) – **RCH610X90X50**

Ram 450mm travel, 90mm piston, 50mm pushrod, bottom boss 95mm long with 30.5 bottom hole, top boss 78mm long with 38.1mm hole, no HDPE bushes fitted (**7) – **RCHM25-450-150**

Ram 550mm travel, 90mm piston, 50mm pushrod, bottom boss 200mm long with 30.5 bottom hole, top boss 78mm long with 38.1mm hole, no HDPE bushes fitted (**7) – **RCHM35-550-200**

Hydraulic Rams Parts – imperial

TIANTON parts (2005- 2016)



Seal kit for above ram 11" x 1.5" x 0.75", piston is in 2 parts, piston is held on with nut, neck collar has 3 machined slots, (Side Swing ram 355, 505, 536, 655, 656, 805 from 2005 - 2015) – **RCHSK1.5X0.75**



Neck bush outside seal over size O-ring for 1.5" ram 1.359 id x .139 c/s grade 90 (Side Swing ram 355, 505, 536, 655, 656, 805 from 2005 - 2015) – **ORBS220-90**



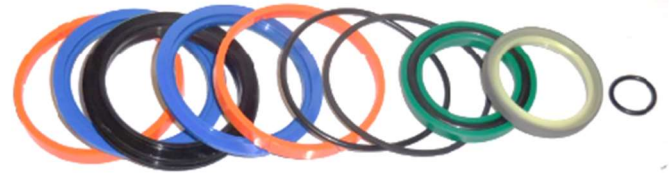
Seal kit for 10" x 2" x 1" (Bin Forks & Side Swing rams 355, 505, 536, 655, 656, boom from 2005 - 2015)– **RCHM5K20-100**



Seal kit for stroke 8" x 2.5" piston x 1.25" push rod – **RCHSK2.5X1.25**

Hydraulic Rams Parts – imperial

TIANTON parts (2005- 2016)



Seal kit for stroke 16" & 24" & 30" x 3.5" piston, x 2" pushrod (Boom ram 355, 505, 536, 655, 656, 805 from 2005 - 2016) – **RCHMSK35-200**



Neck bush outside seal over size O-ring for 3.5" ram 3.234 id x .139 c/s grade 90 (Lift ram 355, 505, 536, 655, 656, 805 from 2005 - 2015) – **ORBS236-90**

Neck bush outside seal over size Back up 3.5" ram (Lift ram 355, 505, 536, 655, 656, 805 from 2005 - 2015) – **ORBUW236**



Push rod wiper for 3.5" ram (Lift ram 355, 505, 536, 655, 656, 805 from 2005 - 2015) – **RCH3.5X2WS** \$..... + GST



Push rod high pressure seal for 3.5" ram (Lift ram 355, 505, 536, 655, 656, 805 from 2005 - 2015) – **RCH3.5X2PRS** \$..... + GST

Hydraulic Rams – Baker parts

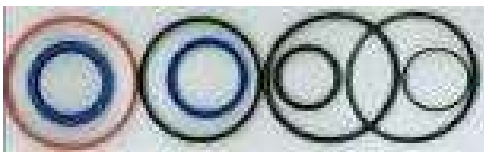
(1995- 2005)



Seal kit BAKER SK7940 for Light Ind 2" piston, 1" pushrod, (Side Swing Ram 355, 505, 536, 655, 656, 805 from 1995- 2005) – **RBSK2.0**



Seal Kit BAKER 2.5" piston, 1.25" pushrod, (3.8 side swing up to 1995) - **RBSK2.5X1.25**



Seal Kit BAKER 3" piston, 1.5" pushrod (6.5m & 655 side swing up to 1995) – **RBSK3.0**



Seal Kit BAKER 3.5" piston, 1.5" push rod (8m & 805 side swing up to 1995) – **RBSK3.5**



Piston Seals Baker Ram 2.5"– **RBPS2.5**



Neck bush seal BAKER 2.5" 1.25" (3.8, Side Swing ram 1985 - 1995) – **RBNB2.5X1.25**

Neck bush seal BAKER 3.5" 1.5" (all, lift ram 1985 - 1995) – **RBNB3.5**



Wiper seal 2.5x1.25" BAKER Apex WK1250A (3.8, Side Swing ram 1985 - 1995) – **RBW2.5X1.25**

Wiper seal 3.5" BAKER Apex W27 (all, lift ram 1985 - 1995) – **RBWS3.5**



Neck bush seal & BA O-ring energiser for 1.5" id x 1.75" od x 0.25" wide, 1.5" push rod (3.5" ram piston) (all, lift ram 1985 - 1995) – **RBNBE3.5**

Hydraulic Rams – Baker parts

(All, lift ram 1985 - 1995)



Piston Seals 2.5" Ram (3.8, Side Swing ram 1985 - 1995) – **RBPS2.5**



Gland 2.5" X 1.25" Apex II (3.8, Side Swing ram 1985 - 1995) – **RBANB2.5X1.25**



Ram knuckle 2.5-3.5" Ø1" (all, lift ram 1985 - 1995) – **RBKN3.5**

Ram knuckle 3.5" drilled Ø1.5" (all, lift ram 1995 - 2005) – **RBK35-15**



Replacement top clevis (Baker 3.5" ram) (all, lift ram 1995 - 2005) **RBTC1.5PR***

Hydraulic Rams - Moore seals

(All, lift ram 1970 - 1985)



Piston Seals 3"x2.62"x0.281" (Moore) – **RBPS3**

Piston Seals 3.5" Type770 Baker/Moore (all, lift ram up to 1995) – **RBPS3.5**



Neck bush 1.5"x2"x.25" 240A Moore – **RMNB3.5**



Wiper seal W27A/NK1500A 1.5" ID x 1.875" OD x .281" – **RMWS3.5**