



Crendon Nominees Pty Ltd A/T/F
the Fry Family Trust T/A: Crendon Machinery
ACN 009 135 335 ABN 53 913 250 628
2 Ramsay Tce
PO Box 95
DONNYBROOK WA 6239
Ph: (08) 9731 1502
Toll Free: 1300 761 922
Fax: (08) 9731 1657
Email: info@crendon.com.au
www.crendon.com.au

Manufacturers and Designers of Horticultural and Viticultural Equipment
* SQUIRREL self propelled elevating platforms * SADIE vineyard & orchard sweepers * NETWIZZ netting retriever

SQUIRREL Parts Catalogue # 3 Planetary Wheel Drive Parts



SQUIRREL Parts Catalogue # 3	Page
<i>Planetary Wheel Hubs - (Crendon IF)</i>	2
<i>Planetary Wheel Hubs - (Crendon EP)</i>	4
<i>Planetary Wheel Hubs - <u>Renold (Oildrive)</u></i>	9
<i>Planetary Wheel Hubs - <u>Danfoss (Reggiana)</u></i>	10

Planetary Wheel Hubs
CRENDON IF 20

(8:1 - extremely heavy duty, 35mm wide planetary cogs, double brake piston seals, soft brake springs, big taper bearings, designed by Crendon)

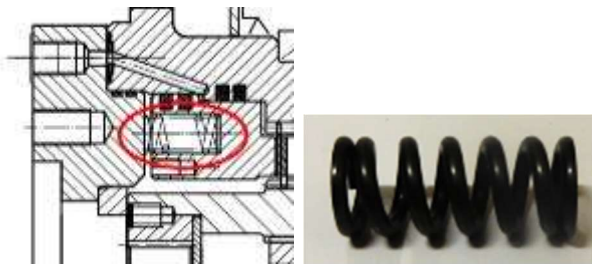
Planetary Wheel Hubs

This hub is interchangeable with all of Danfoss & Ever Power hubs.

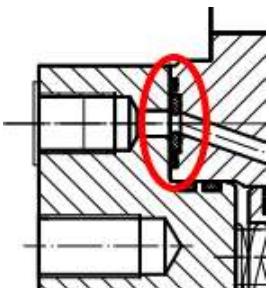


W/hub planetary drive 8:1, free / wheeling, with brakes, very high radial load, 3,000 Nm max output torque (from 10-2020) – **IF20T003T1B008A** *(This is what we are using now)* \$1,837.74

W/hub planetary drive 8:1, free / wheeling, no brakes, very high radial load, 3,000 Nm max output torque (from 10-2020) – **IF20T003T1008A** *(This is what we are using 2 off on 2 off Bogey drive now)* \$1,699.34

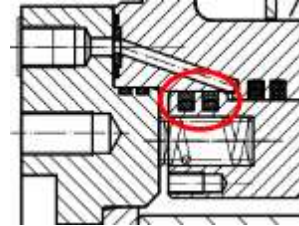


Brake Spring std (CM hub) 13.5 od x 2.5mm x 31mm reference #39 – **IF20-BSS**

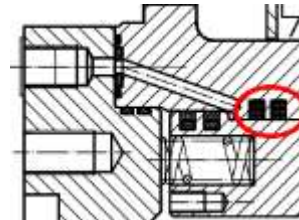


Brake release port O-ring set (outer #112) (inner #108) reference #9, 43 – **IF20-BRPORS**

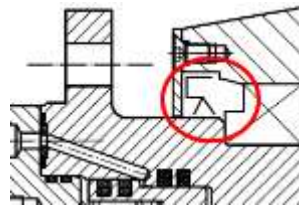
Planetary Wheel Hubs
CRENDON IF 20



Brake Piston Plunger seal, 1x bronze filled PTFE & 1 x O-ring, pair required reference #37 – **IF20-BPPSBF**



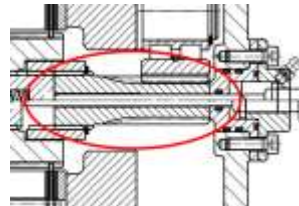
Brake piston housing seal, 1off bronze filled PTFE & 1x O-ring, 2 required reference #40 – **IF20-BPHSBF**



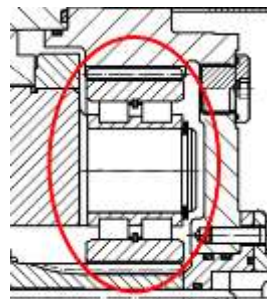
Main rotating double lip seal reference #27 – **IF20-MRDLS**



Main housing tapered roller bearing, 1 off L63010/L630349, 192.2 OD x 152.5 ID x 26.5 wide, 2 required reference #24 – **IF20-MHTRB**

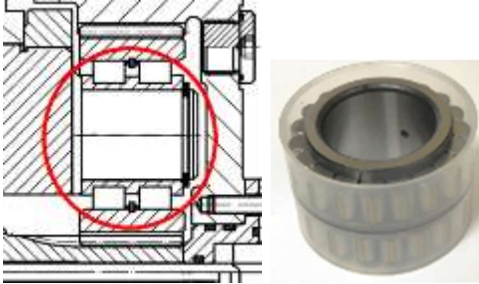


Centre sun gear drive shaft 9 teeth 25.7 od 80 long reference #16 – **IF20-CSGDS9T**

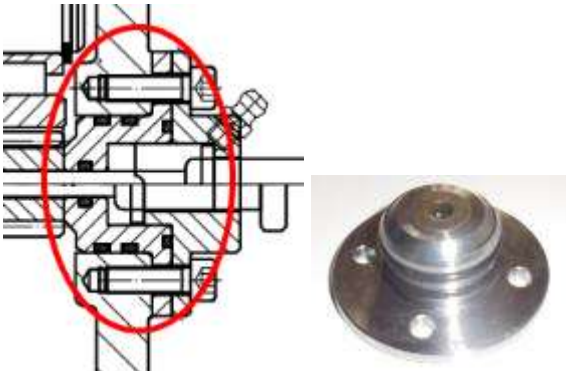


Planetary gear cog (34 tooth, OD 73mm, 35 wide) reference #30 – **IF20-PGC34T**

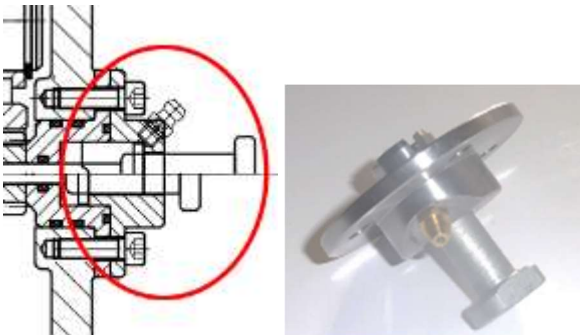
**Planetary Wheel Hubs
CRENDON IF 20**



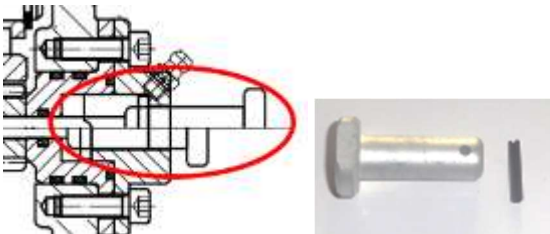
Needle roller assembly for planetary gear cog
RSL185006 29.5 id x 35.3 wide
reference #29 - **IF20-NRAFPGC**



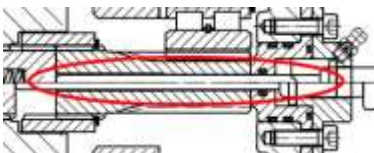
Freewheeling plunger inner housing with O-rings
reference # 9, 8, 7, 6 - **IF20-FWPIHWOR**



Freewheeling plunger outer housing with push knob
reference # 1,2,3,4,5 - **IF20-FWPOHWPK**

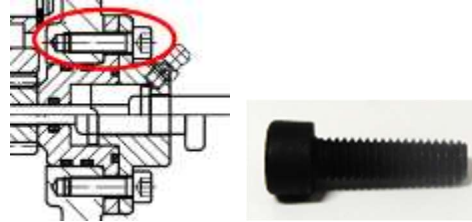


Freewheeling push knob with rolled pin
reference #40 - **IF20-FWPKWNRP**

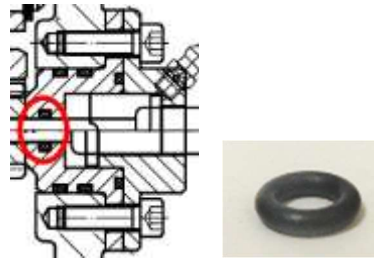


Freewheeling internal plunger
reference #2, 5 - **IF20-FWIP**

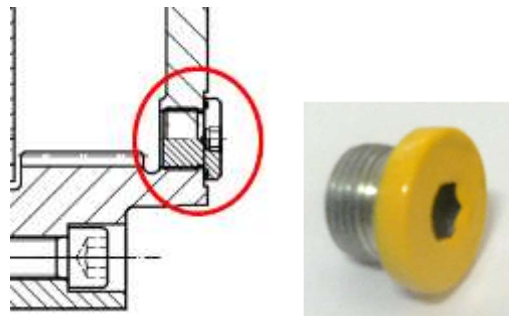
**Planetary Wheel Hubs
CRENDON IF 20**



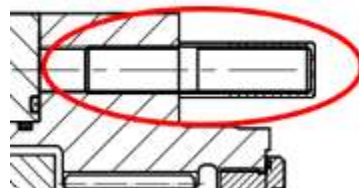
Socket head cap screw for freewheeling plunger assembly
Ø6 x 20 long reference #1 - **IF20-SHCSFFWPA6X20**



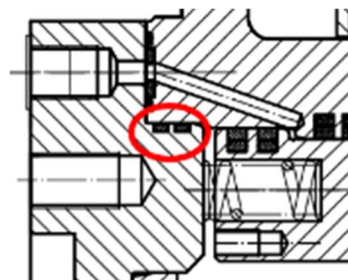
Freewheeling internal plunger O-ring 5.5 id x 2.5 cross section (#108) reference #9 - **IF20-FWIPOR**



Oil drain plug reference #10 - **IF20-ODP**

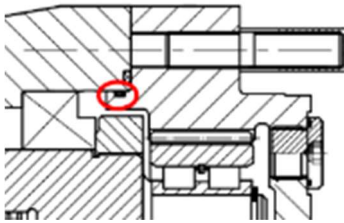


Wheel Stud 1/2" UNF 1 each, 8 required
reference #12 - **IF20-WS1/2UNF**

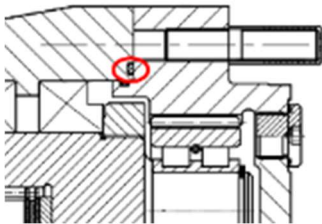


O-ring between backing flange to hub brakes 1 each, 2 required reference #42 - **IF20-OBFBTHB**

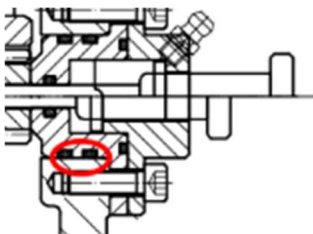
**Planetary Wheel Hubs
CRENDON IF 20**



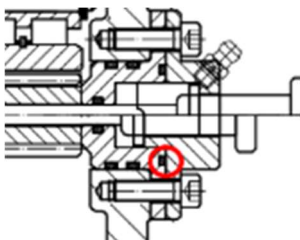
O-ring between front flange to inside of rotating hub 1 required **reference #15 – IF20-OBFFTIORH**



O-ring between front flange to front face of rotating hub 1 required **reference #21 – IF20-OBFFTFRH**



O-ring between free wheel housing & front cover plate, 1 each, 2 required **reference #8 – IF20-OBFWHFCP**



O-ring between free wheel plunger bracket & insert assembly, 1 each, 1 required **reference #6 – IF20-OBFWPBIA**



Wheel Nut 1/2" (Ford) - **AHWNF1/2**



Wheel hub breather 18mm 25 psi – **VP18x1.5-20/25**

**Planetary Wheel Hubs
CRENDON EP#3, CM#4, CM#5,
CM#6, CM#7, CM#8-947
(8:1 - Very heavy duty designed by Crendon)
Planetary Wheel Hubs CRENDON**



W/hub Planetary drive 6.2:1, free / wheeling, with brakes #7-2 565CM#5. (For older squirrel's pre 2016) – **AHPWDB565CM5** not available any more up grade to 8:1

W/hub planetary drive 6.2:1, free / wheeling, NO brakes #7-2CH (For older squirrel's pre 2016)- **AHPWDN601L7-2NB**

W/hub planetary drive 8:1, free / wheeling, with brakes, very high radial load CM#8-947, 2,000 Nm max output torque (from 1-2019) – **AHPWD947B \$1598.29 + GST**

W/hub planetary drive 8:1, free / wheeling, No brakes, very high radial load CM#8-947 2,000 Nm max output torque (from 1-2019) – **AHPWD947NB \$1402.42 + GST**



Hub centre CM planetary hub to frame 10mm plate – **XHCMPH10MM***



Hub breather hub plug release at 25 psi, O-ring seat, stainless steel, 16x1.5mm thread – **VP16x1.5**



Wheel studs 1/2x2 1/4 UNF – **AHPWD716DES12**



Conical spring washer – **BWCS1/2**

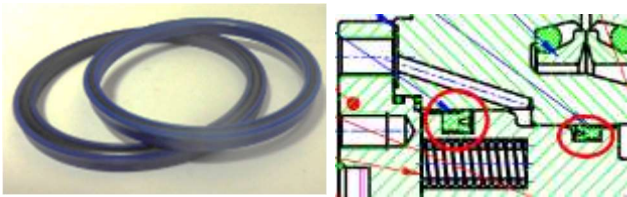
**Planetary Wheel Hubs parts
CRENDON**



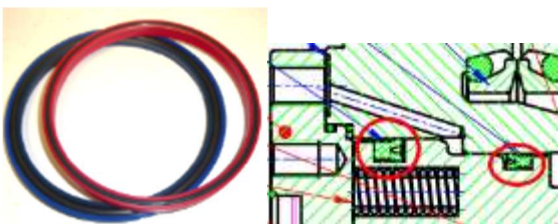
Ever Power Bearing and cone set gear box #7-2 (LL225749-LL225710) OD-165.9, ID-127, width-18.75 used in 6.2:1 & 8:1 hubs (up to 12-2018) – **AHPWD716CBS**



Ever Power Bearing and cone set gear box CM#8-947 (LL225810) OD-170, ID-127, width-27 for 8:1 split hubs (from 1-2019) – **AHPWD947-B11**



Ever Power Seal kit brakes with energiser O-ring, 120x105x8 & 110x100x8, 1 of each size, 6:1 ratio (up to 8-2015) – **AHPWDN601L72BSK \$47.27 + GST**



Ever Power Seal kit brakes with energiser O-ring, 120x105x8 & 115x105x9, 1 of each size, 6:1 & 8:1ratio (after 8-2015) – **AHPWD777BSK**



Piston N601L#7-2 (1 part) CH (up to 8-2015) – **AHPWDN601L7P**

**Planetary Wheel Hubs parts
CRENDON**



Ever Power Disengaging f/wheel assembly N601L#7-2 – flush face inside for rolled pin (up to 8-2015) **AHPWDN601L72DA**



Ever Power Disengaging f/wheel assembly – raised face inside for rolled pin (after 11-2015) **AHPWD777-25*26***



Ever Power Disengaging f/wheel pin N601L#7-2 – flush face inside for rolled pin (up to 8-2015) **AHPWDN601L72HP**



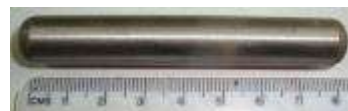
Ever Power Disengaging f/wheel pin – raised face inside for rolled pin (after 11-2015) **AHPWD777-26***



Ever Power Rolled pin 4mm x 18mm long for Disengaging f/wheel pin (all) **AHPWD777-B08**

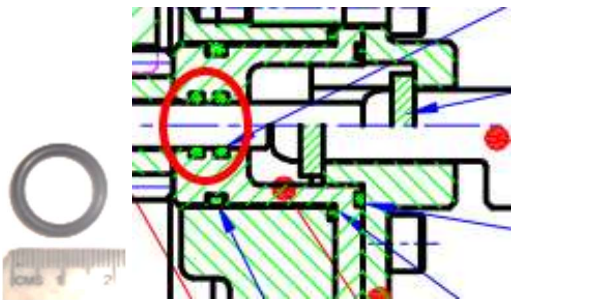


Ever Power Centre pin #24 CM hub, 8:1 hub, Ø 7.9mm x 94mm long– (after 11-2015) **AHPWD77724**

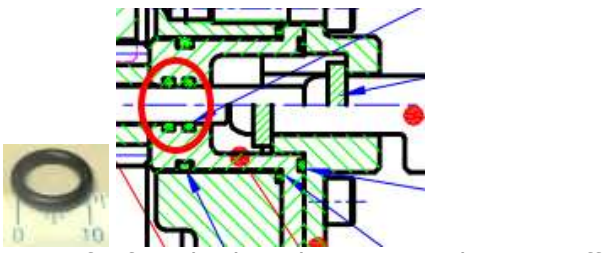


Ever Power Centre pin #24 CM#5 hub, 6:1 hub, Ø 12.5mm x 84mm long – (up to 8-2015) **AHPWD565CP24**

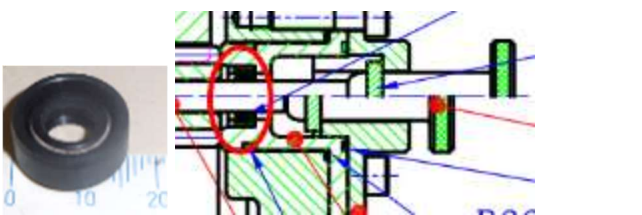
**Planetary Wheel Hubs parts
CRENDON**



O ring for freewheeling plunger 6:1 reduction, 1 off B113, 2 required (up to 8-2015) - **ORBS 113**



O ring for freewheeling plunger 8:1 reduction, 1 off 8X2N9, 2 required (From 8-2015 - 2018) - **ORM08x2-90**

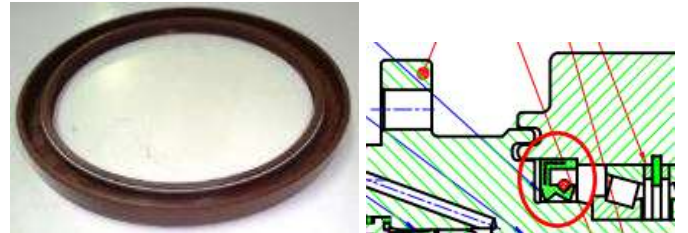


Ever Power Double lip shaft Seal for freewheeling plunger 8:1 reduction, 16 od x 8 id x 7 wide. (From 3-2019) - **OS8-16-7**

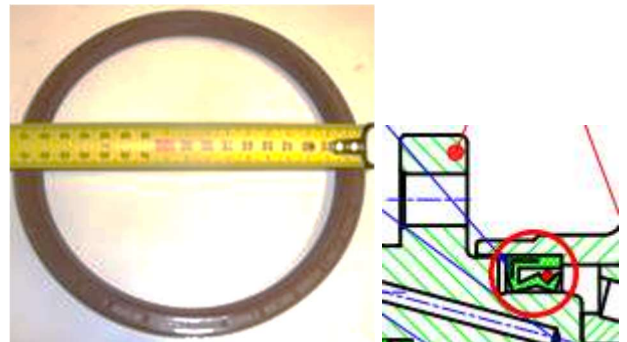


Ever Power Seal kit gearbox, 1 off N601L #7-2, 6:1 reduction, 2 required (up to 10-2014) - **AHPWD565GBS**

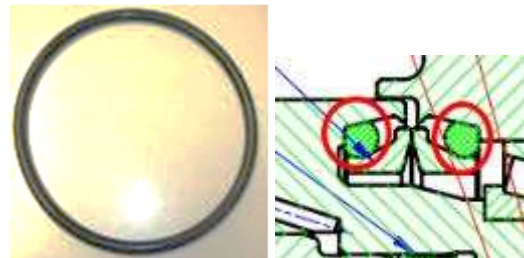
**Planetary Wheel Hubs parts
CRENDON**



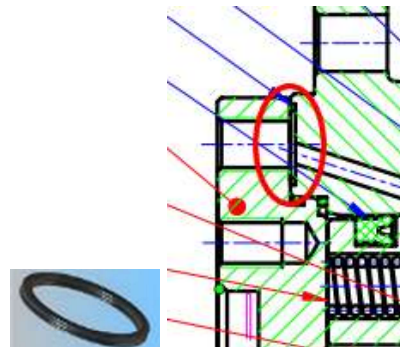
Ever Power Shaft Seal double lip OD-170 ID-140 width 13 (10-2014 - 12-2018) - **AHPWD716S140170**



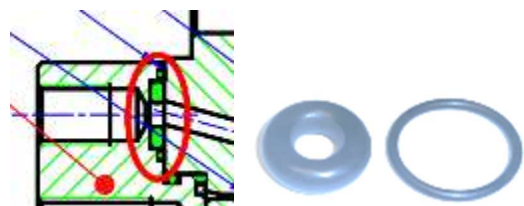
Ever Power Shaft Seal double lip OD-175, ID-155, width-15, (from 1-2019) - **AHPWD947-B09**



Ever Power O-Ring for Dyuro Cone, 1 off 155mmIDx9W NBR70, 2 required (up to 2014) - **ORM155X9-70**



Q-Ring for brake release 0.549 x 0.755" (up to 2017) - **QR113-90**

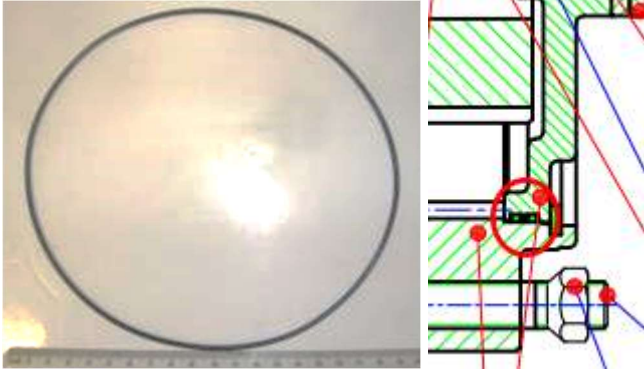


O-Ring for brake release 3/8" id x 1/8" section, inner big one, (from to 2018) - **ORBS204**
O-Ring for brake release 0.644" id x .087", outer smaller one, (from to 2018) - **ORBS908**

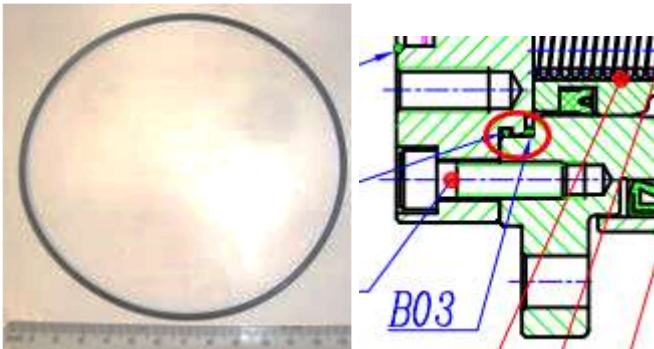
**Planetary Wheel Hubs parts
CRENDON**



Cover plate all - **AHPWDN601L72FCP**



O ring for front cover plate, 1 off ID 6 1/2" x 3/32", 2 required - **ORBS 165**



O ring for brake cover plate, 1 off OD 4 3/4" x 3/32", 2 required - **ORBS 159**



Screw plug, magnet & bonded washer set CM#6 hub - **AHPWD716SPMBWS***



Outer housing CM#6 hub, 6:1 reduction (up to 8-2015) - **AHPWD565OH-21**

Outer housing CM#7 hub, 8:1 reduction (11-2015 to 12-2018)

- **AHPWD777-21**

**Planetary Wheel Hubs parts
CRENDON**



Outer housing CM#947 hub, 8:1 reduction (After 1-2019) - **AHPWD947-21**



Inter housing CM#947 hub, 8:1 reduction (After 1-2019) - **AHPWD947-03**



Sun gear cog CM#6 hub 6:1 reduction (up to 8-2015) - **AHPWD716SG**



Sun gear cog CM#7 hub 8:1 reduction (After 11-2015) - **AHPWD777-20**



Spline drive sleeve #12 CM7 8:1hub, OD 36mm x 34mm long (after 11-2015) - **AHPWD777-12**



Spline drive sleeve #12 CM5 6:1 hub, OD 36mm x 34mm long (before 11-2015) - **AHPWD565SDS12**

**Planetary Wheel Hubs parts
CRENDON**



Spline drive sleeve #12 CM7 8:1 hub, OD 33.7mm x 45mm long, (after 11-2015) – **AHPWD777-12**



Sun gear drive spring CM#7 hub 6:1 reduction, Ø24.6 x 35 long x Ø2.2 wire (up to 8-2015) – **AHPWD565SGDS-09**



Gear cog 6:1 reduction (33 tooth, OD 73.9mm) (up to 8-2015) - **AHPWD565C17**

Gear cog 8:1 reduction (34 tooth, OD 76.7mm) (after 11-2015) - **AHPWD777-17**



Needle roller bearing set (4.76x23.8) - **AHPWD565NRB**



Planter cog-centre shaft #16, 6:1 reduction CM#5 hub (up to 8-2015) - **AHPWD565CSC16**



Planter cog-centre shaft V565 #24, 8:1 reduction CM#7 hub, Ø21.2, ends Ø19 x 45 total length (after 11-2015) - **AHPWD565SGCCS24**



Planter cog-centre shaft reduction hub, Ø20 x 49 total length one end has machined flat spot 3.5 long – **AHPWD5x49-15Q93**

**Planetary Wheel Hubs parts
CRENDON**



Planetary gear spacing ring V565 (18) - **AHPWD565PGSR18**



Block (1) - **AHPWD565B02**



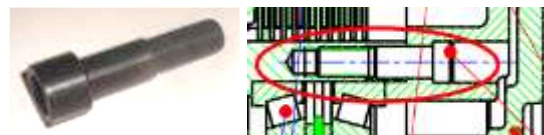
Brake Spring Extra heavy (CM hub) 15odx3.5mmx40mm (not recommended) – **AHPWD777-08XHBS**

Brake Spring heavy (CM hub) 15odx3.15mmx40mm (all) – **AHPWD716BS \$4.14 + GST**

Brake Spring light (CM hub) 15odx2.5mmx40mm (for light braking only) - **AHPWDN601L7-2BS \$2.68 + GST**



Socket head cap screw 8x25 for, 6:1 reduction hubs– **AHPWD716C5M8X25FBW**



Bearing holding shoulder bolt, 10mm thread, 11mm shoulder, 40mm long - **AHPWD716SC**



Hyd Motor to CM Hub 1/2" x 1 1/2" UNF socket head cap screw (from 9-2015) – **BSHC1/2x1.2UNF**



Hyd Motor to CM Hub 12mm x 35 socket head cap screw (for up to 8-2015) – **BSHCM12x35**

**Planetary Wheel Hubs parts
CRENDON**



Friction plate set - **AHPWD565FPS**



Rear motor adaptor plate all 8:1 (after 11-2015) - **AHPWD947-01**

**Planetary Wheel Hubs
Renold (Oildrive)**



Freewheeling, with brakes W/Hub GR211 (No motor) 1,500 Nm max output torque - **AHRGR21116FWBNM** \$..... + GST



Drive motor 160cc W/Hub GR201 series - **AHRGR20116M**

Renold parts



End cover plate ONLY GR211 W/Hub - **AHRGR211EPA**



Renold Brake release shuttle valve for GR201 - **AHRBRSV**
Banjo bolt for Brake release shuttle valve (pictured on right) - **AHRBRSVBB**



NOT AVAILABLE

Renold Freewheeling release pin (61) GR201 - **AHRGR200FWP**



Renold Freewheeling side release pin REN (replaces AHRGR200FWP) - **AHRFWSRP***

Planetary Wheel Hubs
Renold (Oildrive)



Renold Belleville disc spr wsh 63x31x2.5 – **BWB31X63X2.5**



Nut Rod coupler M10X40 ZP – **BNRC10X40**
Cap screw, socket head M10X40 – **BSHCM10X40**



Sun gear - 6mm bolt hole W/Hub renold (recon) **NOT AVAILABLE** – **AHRGR211SG**



Sun gear/bolt/plunger **NOT AVAILABLE** – **AHRGR211SGP**



Renold main bearing 2 required 160 od x 105 id x 18 wide – **B16021**



Renold Main shaft seal 130 od x 160 id x 12mm GR201 – **OS13016012**



Renold O-Ring Seal kit for GR200/201 – **AHRGR200/1ORK***

Planetary Wheel Hubs
Danfoss (Reggiana)



WGF083/61-9 154B9642KM (early model EX-733) – **AHDFBFWNM**

WGF083/61-9 154F383M359 (model EX-1465) –

RWD200B/6.1; 154F4224NH (late model EX-1733 with 12 springs) – **AHDFBFWNM12S**



Danfoss Brake spring for 154B9642KM W/hub (early model) – **AHDWBSWGF083**



Danfoss Brake spring (Medium) 110Dx3x25 **SBC1070x315x256 Not Available**

Danfoss Brake spring (Heavy) 110Dx3.2x28 **SBC11x3.2x28 Not Available**



Danfoss Bearing 62od X 35id X 9mm (Ex-1733) – B16007



Danfoss Mechanical seal WGF0839 W/hub C138003 – **AHDMSWGF0839**



Danfoss Socket head cap screw 6 x 30 to hold bearing cap plate in hub, 10 required to replace set, Theas can be stretched when hub is pressurised, – **BSHCM06X30**

Planetary Wheel Hubs

Danfoss (Reggiana)



Danfoss Wheel stud & nut 1/2" UNF W/hub DF –
AHDWSW*



Conical spring washer – **BWCS1/2**



Danfoss O Ring kit Danfoss wheel hub EX-1465/1733 -
AHDORK1465* \$59.62 + GST



Danfoss Free-wheeling plunger Danfoss hub –
AHDFWP*



Danfoss Brake Sintered Disc Danfoss Hub –
AHDFSDWGWGF0839 \$72.20 + GST



Danfoss Shaft Seal double lip OD-170 ID-145 width 13 –
OS14517012DL \$..... + GST