



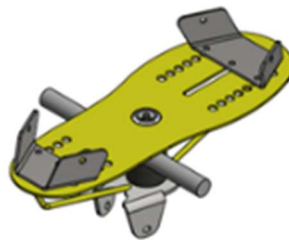
Crendon Nominees Pty Ltd A/T/F  
the Fry Family Trust T/A: Crendon Machinery  
ACN 009 135 335 ABN 53 913 250 628

2 Ramsay Tce  
PO Box 95  
DONNYBROOK WA 6239

Ph: (08) 9731 1502  
Toll Free: 1300 761 922  
Fax: (08) 9731 1657  
Email: [info@crendon.com.au](mailto:info@crendon.com.au)  
[www.crendon.com.au](http://www.crendon.com.au)

*Manufacturers and Designers of Horticultural and Viticultural Equipment*  
\* **SQUIRREL** self propelled elevating platforms \* **SADIE** vineyard & orchard sweepers \* **NETWIZZ** netting retriever

## **SQUIRREL Parts Catalogue # 1** **Squirrel Components, Bushes, Pins,** **Rims, Tyres**



<b>SQUIRREL Parts Catalogue # 1</b>	<b>Page</b>
<i>Bearings, Bushes, Collars &amp; Adaptors, sleeves.....</i>	<b>3</b>
<i>Pins Metric .....</i>	<b>5</b>
<i>Pins Metric with Cleats.....</i>	<b>6</b>
<i>Pins inches for 2000 models.....</i>	<b>5</b>
<i>Throttle &amp; Bowden Cable &amp; components .....</i>	<b>8</b>
<i>Engine to Pump Couplings.....</i>	<b>8</b>
<i>Chain, Sprockets, Keyway &amp; motor bolts for chain drive.....</i>	<b>10</b>
<i>Hubs &amp; Axles 1.0t, 1.25t, 1.5t &amp; 2.5t .....</i>	<b>11</b>
<i>Gas Struts &amp; Springs.....</i>	<b>12</b>
<i>Rubber Buffers &amp; Cage Foot Pedal &amp; Pegs .....</i>	<b>13</b>
<i>Foot Pedal Linkage &amp; Rod ends .....</i>	<b>14</b>
<i>Cage Parts, Components &amp; Gates.....</i>	<b>15</b>
<i>Cage Gate latches, Bolt Protectors, Seat Belts .....</i>	<b>16</b>
<i>Squirrel Boom to Cage Brackets &amp; LVI Cages, .....</i>	<b>17</b>
<i>Chain Saw Rack, Trays for Netting, hose clamps .....</i>	<b>18</b>
<i>Boom Height Sensor Bracket &amp; Boom Reinforcer Brackets .....</i>	<b>18</b>
<i>Drawbars, Throttle actuator Bracket, Kubota base plate .....</i>	<b>19</b>
<i>Bell Housings, light guards Battery clamps .....</i>	<b>20</b>
<i>Planetary Drive Hub brackets, Caster Wheels &amp; Cross Rockers .</i>	<b>21</b>
<i>Motor &amp; Hose Covers, Paint, Pulleys .....</i>	<b>22</b>
<i>Rims Hot Dip Galvanizing .....</i>	<b>23</b>
<i>Rims, Rim Centres, Drive Tyres, .....</i>	<b>24</b>
<i>Caster Wheels Tyres, Tubes .....</i>	<b>25</b>
<i>Wheels Complete .....</i>	<b>26</b>

## Bearings

### SQUIRREL CAGE BEARINGS (for 1980 -1995)



Bearing Housing Plate 52PB – **BPF205**

Bearing 1" EN205-16S Eccentric collar – **BEN205-16S**

### BOOM & CASTER BEARINGS (for 1980 -1995)



Bearing 1-3/4" UC209-28S – **BUC209-28S**

Bearing 2" UC211-32S – **BUC211-32S**

Bearing Housings Flange F209 4hole – **BF209**

Bearing Housing Flange FL209 4hole- **BFL209**

Bearing Housing Flange F211 4hole – **BF211**



(for 1970 -1995)

Bearing Housing Pillow block P209 – **BP209**

Bearing Housing support for Pillow block P209 – **BP209HS\***

## Bushes (for 1980 -1995)



Bush, Bronze 1"x1-1/8"x1" – **BFB801**

Bush Bronze 1"x1 1/4"x1" – **BFB811**

Bush Bronze 1"x1.5"x1" – **BB1.5ODX1IDX1\***

## Bushes



Boom bush machined 52mm both ends

60mmODx1 3/4"IDx200mm – **XBS60X134X200**

Caster Wheel bush machined 65mm both ends

76OD x 2.1/4 x 200mm – **XBS76X214X200**



Caster wheel spacer for 15" wheels – **XCWS31X15\***

## Steel Washer Spacer



Steel Washer 100 OD x 60 ID x 6mm – for SQ Caster wheel  
– **XSWCW\*** \$20.73 + GST



Steel Washer 85 OD x 52 ID x 3mm – for Squirrel boom  
side shim – **XSWBP\*** \$12.39 + GST

## Steel adaptor sleeve



Steel adaptor to convert older LV pivots Ø45mm to new  
Ø38mm ones – **XSALVB\*** then use 2 x **NBFLV1**



1" pin Bush steel & nylon for lift ram, (for 1995 -2015) 1 1/2  
OD x 1" ID x 95mm long SQ boom ram – **XBBSN\*** \$78.00 +  
GST

## Collars



Steel collar for caster wheel upright steel collar (for 1995 -  
2015) 2.25" with 4 x grub screws – **SC2.25**



Squirrel caster wheel upright steel collar (from 2015)  
Ø75mm x 40 long shaft, 4 x 12mm grub screws –  
**SC110X75X40**

Squirrel caster wheel rocker steel collar (from 2015)  
Ø50mm x 30 long shaft, 4 x 12mm grub screws –  
**SBC80X50X30**

Squirrel second boom steel collar weld in for Ø50mm x 20  
long shaft, – **SC75X50X20**



Steel collar 50mm weld in (from 2015) – **SCB50**

Steel collar 30mm weld in (from 2015) – **SCB30**

## Bushes HDPE (from 2015) (This is what we are using now)



Ø75mm, Shaft Caster Wheel, Bogie wheel Drive, Nylon HDPE bush for Ø75mm shaft 140 Flange 76id x92od 120mm long – **NBF140\*92.1X80** (from 2015)  
\$22.25 + GST



Ø50mm shaft, Boom Base, Caster wheel rocker Nylon HDPE bush for Ø50mm shaft, Ø 90 Flange, 60 x 50.4 id x 90mm long – **NBF90\*62X50.4X9** (from 2015)  
\$14.36 + GST



Ø40mm 008 Lift Ram, Nylon HDPE Bush for Ø40mm shaft 60 Flange 49.4od x 40.8id x 55mm long – **NBF80\*40.4X49.4** (all 008)  
\$10.38 + GST



Ø30mm shaft, Stabilizer Bar, Cage, Boom to Cage Nylon HDPE bush for Ø30mm shaft 60 Flange 38.15od x 30.4id x 90mm long – **NBF60\*3815,304**, (from 2015)  
\$8.36 + GST



Ø20mm Side Swing Ram, Nylon HDPE Bush for Ø20mm shaft, 50 Flange 30.15od x 20.35id x 24mm long – **NBF50\*30.1x20.3** (all 008)  
\$6.36 + GST



Ø30mm Lift Ram, Nylon HDPE Bush for Ø30mm shaft 60 Flange 38.15od x 30.4id x 50mm long – **NBF60\*38.15X30**. (from 2015)  
\$7.36 + GST

## Low Voltage Insulation Bush



OD Ø49.3mm, ID Ø38mm 198 long Nylon HDPE Bush for 508 LVI & 708 LVI **NBF49.3\*38x198** use next one down instead



OD Ø49.3mm, ID Ø38mm 198 long fibreglass Sleeve for 508 LVI & 708 LVI **FS38X49.3x198** (from 2021 LV models only) inside boom & stabiliser boss then use std **NBF60\*3815,304** HDPE bush inside this Fibreglass sleeve



Bush flanged LVI 60mm OD flange x 38OD x 25.8 ID x 75mm for all 3 pivots 6 per squirrel (for old squirrels 2007-2015) – **NBFLV1**  
\$19.27 + GST



Bush flanged LV 50mm OD flange x 26.4OD x 16 ID x 62mm for side swing ram (2007-2015) – **NBFLV58**



Side Swing Bush & washers LV, washer 2 x 50mm OD x 17 ID x 5 mm thick & 1 x 26.5 OD x17mm ID x 50mm long for side swing ram (2007-2015) – **NB3PLV58\***  
\$78.46 + GST

Side Swing Bush & washers LV, washer 2 x 50mm OD x 20 ID x 5 mm thick & 1 x 26.5 OD x20mm ID x 50mm long for side swing ram (2007-2015) – **NB3PLV34\***  
\$78.46 + GST



## Thrust Washer HDPE (for 1995 -2015)



Nylon washer, cage thrust side swing 100ODx25IDx6W  
– **XNWC\*** \$32.00 + GST



Nylon washer, SQ caster wheel thrust, 100ODx60IDx6 -  
**XNWCW\*** \$32.00 + GST

## Bushes HDPE older Squirrels (1995 -2015)



2 1/4" pin Bush, Caster wheel (2007-2015) (picture left)  
Nylon white for machined recess 65mm OD x 58mm ID  
x 65mm long - **NB214CH** \$29.45 + GST

2 1/4" pin Bush, Caster wheel (1995-2007) white for  
2 1/4" pin no machined recess 63.4 OD x 58.2 ID x 65mm  
long - **NB634-581-65** \$39.45 + GST



1 3/4" pin Bush, Boom Base (2007-2015) & caster wheel  
cross rocker pivot Bush on 806 & 805, Nylon white for 1  
3/4" pin machined recess 52 OD x 44.9 ID x 65mm long  
SQ Boom pivot – **NB134CH** \$20.60 + GST

1 3/4" pin Bush, Boom Base (1995-2007) white for 1 3/4"  
pin no machined recess 49.9 OD x 44.9 ID x 65mm long  
- **NB499-460-65** \$30.60 + GST



1" pin Bush, Stabilizer Bar, Cage, Lift ram pin, pivots  
(1995 - 2015) (picture right) no machined recess,  
Nylon white 32.7 OD x 25.8mm ID x 45 long - **NB1CH**  
\$13.91 + GST



ØID 30mm Boom Lift Ram steel sleeve with sintered bronze  
bush for Ø30mm pins. Sleeve od 38.17 x 36 long, Flange  
Ø50x9 wide, with sintered bronze bush, 34 od x 30 id x 40  
long. Fits Rams that did have Nylon HDPE Bush for Ø30mm  
shaft 60 Flange 38.15od x 30.4id x 50mm long -  
**SSBF5038.17X30\*** (from 2025) \$42.58 + GST each



ØID 30mm Boom Lift Ram steel sleeve with sintered bronze  
bush for Ø30mm pins. Sleeve od 49.28 x 46 long, Flange  
Ø65x9 wide, with sintered bronze bush, 34 od x 30 id x 40  
long. Fits Rams that did have Nylon HDPE Bush for Ø40mm  
pins to take Ø30mm pins – **SSBF6549.28X30\***  
(from 2025) \$44.98 + GST each



ØID 40mm Boom Lift Ram steel sleeve with sintered bronze  
bush for Ø40mm pins. Sleeve od 49.28 x 46 long, Flange  
Ø65x9 wide, with sintered bronze bush, 44 od x 40 id x 50  
long. Fits Rams that did have Nylon HDPE Bush for Ø40mm  
shaft 60 Flange 49.4od x 40.8id x 55mm long –  
**SSBF6549.28x40\*** (from 2025) \$45.34 + GST each



Sintered bronze bush for Ø30mm pins, 34 od x 30 id x 40  
long, the sintered bronze is 0.75 thick. **BB30x34x40x.75**  
\$12.00 + GST



Sintered bronze bush for Ø40mm pins, 44 od x 40 id x 50  
long, the sintered bronze is 0.75 thick. **BB40x44x50x.75**  
\$19.10 + GST

## Pins Metric (from 2015)



Pin Ø24x180mm (bin forks \*\*7) – **SP24X180** \$9.24 + GST



Pin Ø20x115mm (crab steer & cage side swing \*\*7) – **SP20X115** \$4.80 + GST



Pin Ø30 x 88mm (foot pedals) with grease groove, recessed grease nipple– **SPCK30X88\*** \$16.07 + GST



Pin Ø30 x 295mm (cage slew pivot 2015 to 2018) with grease groove, recessed grease nipple, circlip (cage slew pivot) – **SPCK30X295\*** \$24.76 + GST

Pin Ø30 x 337mm (cage slew pivot from 2019) with grease groove, recessed grease nipple, circlip– **SPCK30X337\*** \$29.18 + GST



Pin Ø16x22mm (Cage gate & cage bottom cover) – **SP16x22** \$6.64 + GST



Collar for cage gate latches 16od x 11id x 8 long - **SC16x11x8** \$2.27 + GST



Collar Pair 2 off for ram pins 30od x 25.5id x 20 long with flange: used in new rams to change pin from 30 to 1" for old frames pre 2015 – **XBS30ODX26IDX20** \$43.00 + GST



Ram pin, 30mm standard no grease nipple - **XRPS30NG** \$9.20 + GST

## Pins metric with Cleat (from 2015)



Pin & cleat Ø50 x 315mm internal grip length, (Squirrel rear boom and caster wheel cross axil piovot \*\*7 & \*\*8 l, crab steer \*\*7 & \*\*8) with recessed grease nipple, centre grease groove & circlip– **SPCK50X315\*** \$78.25 + GST

Pin & cleat Ø50 x 255mm internal grip length, (Squirrel rear boom 505, 655 & 805) with recessed grease nipple, centre grease – **SPCK50X255\*** \$78.25 + GST



Pin & cleat Ø20 x 75mm internal grip length, (Side swing ram) with circlip – **SPCK20X78\*** \$24.09 + GST



Pin & cleat Ø30 x 123mm internal grip length, (Squirrel boom ram) with recessed grease nipple, centre grease groove & circlip (some 005 & all 006 Squirrel boom ram) – **SPCK30X139\*** \$25.70 + GST

Pin & cleat Ø30 x 120mm (Squirrel crab steer \*\*7) with recessed grease nipple, centre grease groove & circlip– (all 007) **SPCK30X120\*** \$25.70 + GST



Pin & cleat Ø40 x 147mm grip length, (Squirrel boom ram) with recessed grease nipple, centre grease groove & circlip (all 008 Squirrel boom ram) – **SPCK40X147\*** \$46.56 + GST



Circlip for Ø20mm – **CEXT20** \$..... + GST

Circlip for Ø30mm – **CEXT30** \$..... + GST

Circlip for Ø40mm – **CEXT40** \$..... + GST

Circlip for Ø50mm – **CEXT50** \$..... + GST

## Pins metric with Cleat (from 2015)



Pin & cleat Ø30 x 315mm internal grip length, for stabiliser bar in back box pin (Squirrel 355, \*\*6, \*\*7 & \*\*8) with recessed grease nipple, centre grease groove & circlip– **SPCK30X330\*** \$32.20 + GST



Pin & cleat Ø30 x 242mm internal grip length, for all Squirrel boom & stabiliser to cage with recessed grease nipple, centre grease groove & circlip– **SPCK30X260\*** \$46.57 + GST

Pin & cleat Ø30 x 255mm internal grip length, (Squirrel 505, 655 & 805 rear stabiliser) with recessed grease nipple, centre grease– **SPCK30X255\*** \$30.36 + GST



Pin & cleat Ø50 x 315mm internal grip length, (Squirrel double boom \*\*7) with 2 x recessed grease nipples, 3 x centre grease grooves & circlip– **SPCK50X335\*** \$84.55 + GST



Cage swivel pin, Ø30mm x 324mm grip length for 290mm deep cage, top pin boss is Ø40, (2017 and newer) – **358-818CSP30X290** \$104.83 + GST

Cage swivel pin, Ø30mm x 267mm grip length for 250mm deep cage, top pin boss is Ø40, (2005 - 2017) – **355-806CSP30X250** \$104.83 + GST

## Pins inches Old Models (pre- 2000)



Ram pin, 1" standard no grease nipple - **XRPS\*** \$4.80 + GST



Ram Pin SQUIRREL 1"x92mm & 6mm G/Nip - **XRPGNCH\*** \$11.91 + GST



Ram anchor & bush replacement (boom) – **XRA\*** \$84.00 + GST



Bush Bronze 1"x1.5"x1" - **BB1.50DX1IDX1\***



Ram Pin Top Lift MS Ø 1x125mm 355-805-**XRPSPEC** \$33.00 + GST

## Pins Old Models (pre- 2015)



Caster wheel cross rocker frame pivot pin Ø 1 3/4" x 300mm – 805 old Squirrels – **XCSCWCRP1.75x300** \$.00 + GST

## Pins Old Models (pre- 2015)



Ram Pin Top Lift SQ frame Ø1"x125 grip length steel- **XRPT1x125\*** \$38.21 + GST *check length when ordering*



Cage boom pivot pin Ø 1" x 210 grip length - all Squirrels – **XCBPP1x210\*** \$40.28 + GST - *check length when ordering*



Cage boom pivot pin Ø 1" x 240 grip length - all Squirrels – **XCBPP1x240\*** \$40.28 + GST - *check length when ordering*



Stabiliser bar back box pivot pin Ø 1" x 350mm grip length- all old Squirrels – **XCSBRPP1x350\*** \$51.13 + GST  
- *check length when ordering*



Boom base pivot pin Ø 1 3/4" x 350mm grip length - all old Squirrels – **XCSBRPP1.75x350\*** \$103.09 + GST  
- *check length when ordering*



Boom base pivot pin Ø 1 3/4" x 373mm grip length, tab has 10mm joggle – some 505, 655 & 805 Squirrels – **XCSBRPPJ1.75x375\*** 104.00 + GST *check length when ordering*

## Throttle

Older Squirrels



Throttle cable stainless steel wire rope 2mm – **WRSS2**



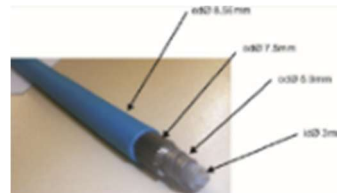
stainless steel rope thimble 2mm, **WRSST2**



stainless steel rope crimping loop 2mm, **WRSSCL2**



stainless steel rope crimping loop 4mm, **WRSSCL4**



Bowden cable **BC9x3.5CH**

Throttle + Bowden cable: 3.8m/355 SQ - **XPTC\*** \$54.00 + GST

Throttle + Bowden cable: 4.5m/505 SQ -

**XPTC4.5\*** \$57.00 + GST

Throttle + Bowden cable: 505 LVI SQ - **XPTC5LVI** \$63.00 + GST

Throttle + Bowden cable: 6.5m/655 SQ -

**XPTC6.5** \$62.00 + GST

Throttle + Bowden cable: 8m/805 - **XPTC8** \$67.00 + GST

Throttle + Bowden cable: 8m/805 LVI - **XPTC8LVI\***



Throttle Cable end set as pictured above – **BXBCPPTES\*** \$7.09 + GST



## Throttle



Throttle handle, Squirrel - **XTH\*** \$28.00 + GST



Throttle bracket – Vanguard engine – **XETBV\*** \$27.59 + GST



Throttle cable terminal end (petrol engine) – **XTCTEP\*** \$21.00 + GST



Bowden cable terminal end (LV cage) – **XCLVBTE\***



Spring, Engine Throttle – **ST\*** \$4.34 + GST

## Couplings Engine to Pump Steel outside Ø 95mm



(from 2016 to 2023) discontinued  
replace with below all same measurements just with a pulley machined in to the engine half boss

## Couplings Engine to Pump Steel outside Ø 95mm



Coupling with A section V belt complete Red centre same as above but with pulley – **CSGR42P95X1A** \$119.73 + GST  
Red centre – **CSGR42S**  
Yellow centre – **CSGR42SY**

## Couplings Steel Engine to Pump outside Ø 120mm



Heavy duty coupling complete, outer diameter 120mm, 1" with 1/4" keyway and group 2 taper shaft for pump with red centre #55– **CSGR55-120** \$123.04 + GST

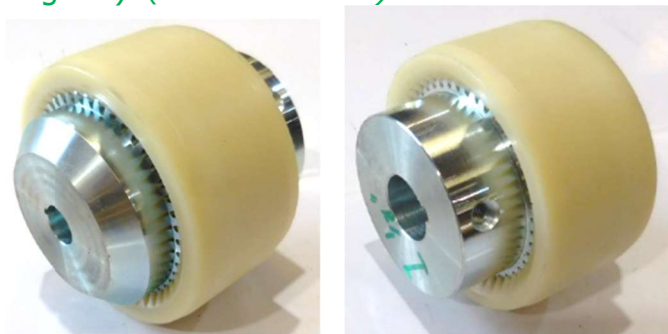


Heavy duty coupling complete, outer diameter 120mm, 1.125" with 1/4" keyway and group 2 taper shaft for pump with red centre #55– **CSGR551.125-120\*** \$137.20 + GST



Red centre for #55 coupling– **CSGR55S** \$7.91 + GST

## Couplings Steel with outer nylon Sleeve SG-55 outside Ø 115mm (for petrol engines) (from mid 2023)



Heavy duty coupling complete, outer diameter 115mm, Ø1" or Ø1-1/8" with 1/4" keyway and group 2 taper shaft for pump with outer nylon sleeve SG-55, Steel parts never contact when outer sleeve wears out.

Complete SG-55 with Ø1" with 1/4" keyway and group 2 taper shaft, with outer nylon sleeve #55 –

**CSRF55-115-1\*** \$135.52 + GST

Complete SG-55 with Ø1-1/8" with 1/4" keyway and group 2 taper shaft, with outer nylon sleeve #55–

**CSRF55-115-1.125** \$135.52 + GST

Complete SG-55 with Ø35mm with 10m keyway and group 2 taper shaft, with outer nylon sleeve #55, - (for diesel D902 from 7-2024) – **CSRF55-115-35\*** \$135.52 + GST



Outer nylon sleeve #55 outer diameter 115mm –

**CSRF55** \$22.02 + GST



## Couplings Steel outside Ø 67mm (From 1985 to 2015)

Nylon Sleeve UCDC28S Coupling - **CUCC28S**

Coupling Half UCDC28PB Pilot Bore - **CUCC28PB**

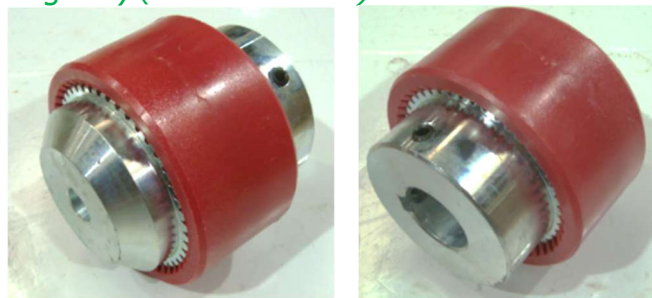
Coupling Half UCDC28PB 1" bore, 1/4" keyway, machined OD 40mm to take pulley - **CMUCC28B1\***

\$75.41 + GST

Nylon sleeve UCDC42 Coupling - **CUCC42S**

Coupling UCDC42 Pilot Bore Half - **CUCC42PB**

## Couplings Steel with outer nylon Sleeve SG-55 outside Ø 115mm (for diesel engines) (from mid 2023)

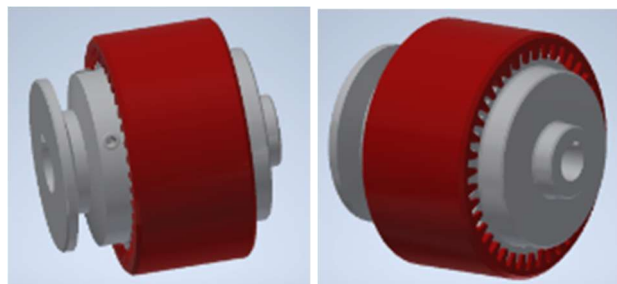


Heavy duty coupling complete, outer diameter 115mm, Ø1" or Ø35mm with 1/4" keyway and group 2 taper shaft for pump with red outer nylon sleeve SG-55, Steel parts never contact when outer sleeve wears out.

Complete SG-55 with Ø1" with 1/4" keyway and group 2 taper shaft, with red outer nylon sleeve #55 –

**CSRGF55-115-1-G** \$135.52 + GST

Complete SG-55 with Ø35mm with 10m keyway and group 2 taper shaft, with red outer nylon sleeve #55, - (for diesel D902 from 7-2024) – **CSRF55-115-35R** \$135.52 + GST



Complete SG-55 with 1A/B, Ø80 pulley Ø1" with 1/4" keyway and group 2 taper shaft, with red outer nylon sleeve #55 – (for engines' with a compressor) **CSRGF55-115-1P\*** \$135.52 + GST



Outer red nylon sleeve #55 outer diameter 115mm –

**CSRGF55SR** \$22.02 + GST

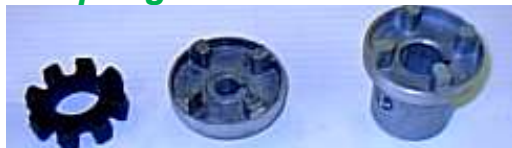
## Couplings Aluminium outside Ø 82mm



Coupling Aluminium ND86 Ø1" outside boss Ø40mm for pulley, 2 x 3/8"x3/8" grub screws Engine half - **CAND8614045\***

*(For engines with compressors)*

## Couplings Aluminium outside Ø 82mm



*(From 2000 to end 2015)*

Rubber centre R82 Coupling Aluminium ND86 - **CAND86S**

Coupling Aluminium ND86 Group 1 Pump half - **CAND86G1**

Coupling Aluminium ND86 Group 2 Pump half - **CAND86G2**

Coupling Aluminium ND86 Ø5/8" Pump half - **CAND8658**

Coupling Aluminium ND86 Ø7/8" Engine half - **CAND8678**

Coupling Aluminium ND86 3/4" Engine half - **CAND8620**

Coupling Aluminium ND86 Ø25mm Engine half - **CAND8625MIL**

Coupling Aluminium ND86 Ø1" Engine half - **CAND86B1**

Coupling Aluminium ND86 Ø1¼" Engine half - **CAND861-14**

Coupling Aluminium ND86 Ø1-1/8" Engine half - **CAND862857**

## Couplings Aluminium outside Ø 62mm



*(From 1985 to end 2000)*

Rubber centre R62 Coupling Aluminium ND65 - **CAND65S**

Coupling Aluminium ND65 Group 1 Pump half -

**CAND65G1**

Coupling Aluminium ND65 Group 2 Pump half -

**CAND65G2**

Coupling Aluminium ND65 MARZOCCHI Pump half -

**CAND65MAR**

Coupling Aluminium ND65 Ø5/8" Pump half - **CAND65B58**

Coupling Aluminium ND65 Ø5/8" Pump half - **CAND65B58**

Coupling Aluminium ND65 Ø7/16" Pump half -

**CAND65B716**

Coupling Aluminium ND65 Ø1" Engine half - **CAND65B1**

Coupling Aluminium ND65 Ø25mm Engine half -

**CAND65B25**

Coupling Aluminium ND65 Ø24mm Engine half -

**CAND65B24**

## Drive Chain



Drive chain with joining link 1/2" SQ – **XDC1/2**  
 Drive chain with joining link 5/8" SQ – **XDC5/8**  
 Drive chain with joining link 3/4" SQ – **XDC3/4** \$56.00 + GST

## Sprockets



Sprocket 68T x 3/4AS x Ø237mm, plate wheel, no boss  
 Flame hardened - **SM68TX3/4A237CH** \$149.03 + GST



Sprocket 68T x 3/4AS x Ø1.75" plate wheel with boss & bored to Ø1.75", Flame hardened.  
 - **SM68TX3/4AS-134**



Hub Drum HT complete - with nuts, bearings, seal & hub cap and Sprocket 68Tx3/4ASxØ237mm welded on.  
**XDSHA\*** \$..... + GST



Sprocket 13T x 1/2 BS Ø1" 1/4 key, 2 x 5/16 set screws, Flame hardened - **SM13TX1/2B1\*** \$24.14 + GST  
 Sprocket 14T x 1/2 BS Ø1" 1/4 key, 2 x 5/16 set screws, Flame hardened - **SM14TX1/2BS1B**  
 Sprocket 15T x 1/2 BS Ø1" 1/4 key, 2 x 5/16 set screws, Flame hardened -- **SM15TX1/2B1\***

## Sprockets



Sprocket 12T x 5/8" BS Ø1" 1/4 key, 2 x 5/16 set screws, Flame hardened -- **SM12TX5/8AS1B** \$32.26 + GST  
 Sprocket 13T x 5/8" BS Ø1" 1/4 key, 2 x 5/16 set screws, Flame hardened - **SM13TX5/8B1\***



Sprocket 10T x 3/4" BS Ø1" 1/4 key, 2 x 3/8 set screws, Flame hardened - **SM10TX3/4AS1B** \$24.14 + GST  
 Sprocket 11T x 3/4" BS Ø1" 1/4 key, 2 x 3/8 set screws, Flame hardened - **SM11TX3/4B1\***  
 Sprocket 12T x 3/4" BS Ø1" 1/4 key, 2 x 3/8 set screws, Flame hardened - **SM12TX3/4B1\***

## Keyway



Woodruff Key 1x 1/4" for most hydraulic motors – **KW1/4X1**

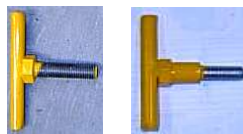


Straight keyway 1/4" x 1/4" x 25mm for White hydraulic motors – **KS1/4x1\***

## Motor Bolts for chain drive Squirrels



Motor Bolt 5/8X1 3/4" Squirrel - **XMB5/8X1.34\***



Chain tensioner SQ - **XCT5/8X2.12**  
 Motor Bolt 5/8X2 1/2" Squirrel - **XMB5/8X2.12**



## Hubs 1 & 1.25t



Hub HT complete with bearings, cones fitted – **AHHHT**  
 Hub Drum HT BARE-no bearings, seals, nuts -  
**AHHDHT9X1.3/4**

## Axles 1 & 1.25t



Stub Axle 8" x 39mm round, nut, washer, split pin -  
**AHAS8X39RND**  
 Stub Axle 12" x 40mm square nut, washer, split pin -  
**AHAS12X40SQ**  
 Stub Axle Slimline 10" x 45mm square nut, washer, split  
 pin - **AHASS10X45SQ**

## Bearings 1 & 1.25t



Wheel bearing set std Holden Large & small cup, cone,  
 oil seal – **BTWSH** \$23.80 + GST



Double lip shaft, 65od x 43.6 id x 12 wide–  
**BTWS65X43.6X12**



Dust Cap std HT 1 3/4" – **AHDCHT** \$3.22 + GST



Wheel bearing set "SLIMLINE" Type B & seal – **BTWSS**



Wheel Nut 7/16" 60° (HT HOLDEN) - **AHWNHT7/16**  
 \$1.38 + GST  
 Wheel Stud 0.437x1.5 (HT HOLDEN) -**AHWS.437X1.5**  
 \$4.00 + GST

Wheel Nut 1/2" (Falcon) - **AHWNF1/2** \$1.38 + GST  
 Wheel Stud 1/2" (Falcon) - **AHWS1/2** \$3.00 + GST

## Hubs & Axles 2t (From 2010 to 2015)



Hub assembly FORD 2 ton complete (5x1/2UNF-114.3PCD)  
 with bearings, shaft seal, hub cap, thread Ø25, small  
 bearing id 26.94 – od 50, big bearing id 34.98 – od 59.97,  
 shaft seal id 43.57 - od 65 - width 12, hub cap size Ø50.5 -  
**AHA5X12+2X12** \$61.00 + GST



Wheel bearing set, (big & small bearing & seal) 2-ton FORD  
 for hub/stub & Squirrel trailer – **BTWSF\***

Wheel bearing big & cone, id 34.98 – od 59.97 -  
**BTWL68149/11**

Wheel bearing small & cone, id 26.94 – od 50  
 (1.0625x1.9800x0.56) - **B44649/10**

Shaft seal shaft seal idØ43.57mm od65mm width 12mm-  
**BTYS65X43.6X12**



Dust Cap for 2T & Squirrel trailer Ø50.5mm – **AHDCCH**

## Hubs & Axles 2.5t



(From 2015 this is what we are using now)  
 Hub/axle assembly, FORD PDC, 2.5 ton complete (5 x  
 1/2UNF - 114.3PCD 2" SQ x 14" long)-**AHA5X12F2.5**  
 \$136.38 + GST



Wheel bearing set, (2 x big bearing & seal) 2.5-ton FORD  
 for hub/stub – **BTWSF2.5** \$32.20 + GST  
 Wheel bearing big used 2 & cone, id 34.988 x od 59.131,  
 (id 1.38 x od 2.33)- **BTWL68149/10**  
 Shaft seal **OST21TB**

## Hubs & Axles 2.5t



Dust Cap for 2.5-ton Ø 60mm for large, tapered flange 2.5 ton hubs as pictured above – **AHDC60**



Dust Cap for 2.5-ton Ø 63mm for smaller square edge flange 2.5 ton hubs as pictured above – **AHDC63**



Wheel Stud & nut 1/2"-20UNF x 40mm – **AHWS12-20UNF**



Wheel Nut 1/2" (Ford) - **AHWNF1/2**



Conical spring washer – **BWCS1/2** \$1.09 + GST

## Gas Struts



Gas strut 500N; 375 open length; 150 stroke - (all from mid 2015) DN11008 SQ – **GST500N-375-150**

Gas strut 400N-505 DN11008 SQ - **GST400N505**

Gas strut 300N-630 DN10300630 SQ - **GST300N630**

Gas Stay Ball Stud 10mm & nut M8 - **GSTMLSMP-351**

## Gas Struts Stainless steel



Stainless Steel Gas strut for 008 Bonnets 700N; 375 open lengths; 150 stroke - (all 008 squirrels bonnets) **GST700N-375SS** \$79.14+ GST

## Springs Engine



Engine Throttle Spring, 5/8" id x 16 gage, zinc plated – **STCH** \$4.34+ GST



Bolt, Short for Engine Support Spring - **SESBS\***

Bolt, Long for Engine Support Spring - **SESBL\***

SPRING Only, Engine Support - **SES\***

## Springs Engine



Engine spring 50od x Ø 7 wire x 45mm high, zinc plated – **SSEM** \$12.62 + GST

## Springs Cage gate



Two-man cage gate spring – **SGC200**

## Springs Cage gate



Cage gate spring heavy 25 id x 4 x 200mm long total length, zinc plated – **XCGS25\*4\*150**

Cage gate spring medium 25 id x 3.5 x 200mm long total length, zinc plated – **XCGS25\*3.5\*150** \$10.16 + GST

Cage gate spring light 25 id x 3 x 200mm long total length, zinc plated – **XCGS25\*3\*150** \$10.16 + GST

Cage gate spring very light 25 id x 2.5 x 200mm long total length, zinc plated – **XCGS25\*2.5\*150**



Cage gate spring medium 25 id x 3.5 x 200mm long total length, zinc plated with chain and bolts – **XCGS25\*3.5\*COMP\*** \$22.01 + GST

## Springs Foot control valve



Foot pedal lift control spring 9 id x 5 wire x 70 long old type do not use, use below instead – **XFLS9\*5\*70**



Foot pedal lift control spring 9 id x 6 wire x 76 long, zinc plated – **XFCS24\*6\*76** \$11.95 + GST *(From 2000 this is what we are using now)*



Foot pedal lift control spring kit – **XFLSKIT\*** \$36.19 + GST *(From 2000 this is what we are using now)*

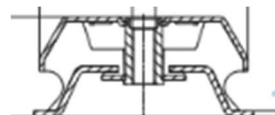
## Rubber Buffers engine mount



Rubber mount 1/4" (6mm) thick – **BCB6067**

Rubber mount 5/16" (8mm) 33x20mm thick - **BCB6068**

Rubber mount 3/8" (10mm) 40x20mm thick - **BCB6069**



Fail safe Rubber mount 12mm top 10mm bottom holes 33mm high, 110mm wide, can fit in to same holes engine mount springs – **RBM33110**

## Rubber Buffers boom prop



Boom Rubber buffer Ø 100 x 30 thick 12mm thread– **RBM12\*37\*100**

Boom Rubber buffer Ø 80 x 40 thick 12mm thread– **RBM12\*37-VE8040** *(this is what we are using now)* \$23.22 + GST

Boom Rubber buffer Ø 75 x 25 thick 12mm thread– **RBM12\*37**



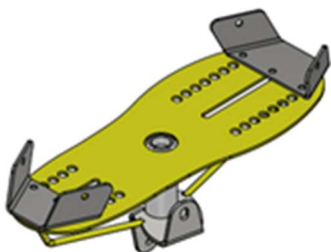
Bonnet & cage gate Rubber buffer stop Ø25 x 15 thick 6mm thread (008 squirrels) – **RBM6\*37-VE2515** \$5.16 + GST

## Cage Foot Pedal



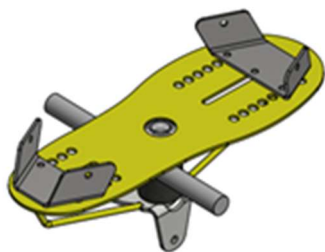
Foot pedal for drive motors with new foot stops, foot stops easy adjustable, cannot be lost, each, for Akon & Galtech valves – **XFPDMA+G** \$222.65 + GST  
(This is what we are using now)

Foot pedal for drive motors Rubber Coated for LIV cages with new foot stops, foot stops easy adjustable, cannot be lost, for Akon valves - **XFPDMA+GLVI**  
\$474.37 + GST



Foot pedal for Boom lift & side swing with new foot stops, foot stops easy adjustable, cannot be lost one each, for Akon valves – **XFPBLSSA** \$222.65 + GST  
(This is what we are using now)

Foot pedal for drive motors Rubber Coated for LIV cages with new foot stops, foot stops easy adjustable, cannot be lost, for Akon valves – **XFPBLSSALVI**  
\$474.37 + GST



Foot pedal for Boom lift & side Swing with new foot stops, foot stops easy adjustable, for Galtech controls– **XFPBLSSG** \$222.65 + GST

Foot pedal for Boom lift & side Swing Rubber Coated for LIV with new foot stops, foot stops easy adjustable, cannot be lost one each, for Galtech controls– **XFPBLSSGLVI** \$474.37 + GST

## Cage Foot Pedal & Pegs



Front (wider) foot pedal stops, foot stops easy adjustable, cannot be lost (lift & drive same) – **XFPFSF\***



Rear (narrower) foot pedal stops, foot stops easy adjustable, cannot be lost (lift & drive same) – **XFPFSR\***



Rear (narrower) for LVI Cages foot pedal stops, foot stops easy adjustable, cannot be lost (lift & drive same) – **XFPFSRLVI**



Front (wider) for LVI Cages, foot pedal stops, foot stops easy adjustable, cannot be lost (lift & drive same) – **XFPFSFLVI**



Bush – foot pedal Ø20x40mm with flange bracket, grease nipple (from 2015) – **SPB35X20X40**



Foot Peg (old BOLT style) SQ - **XFCB\***



Foot Control Bolt Stop, all Squirrels - **XFCBS\***



## Foot Pedal Linkage & Rod ends



Foot Control Rod SQ - **XFCR\***  
6 or 8mm diameter (1970 – 1995) – State overall length when ordering



Foot Control Rod end 8mm diameter (1980 – 1995)  
- **XFCR8B\***



Linkage Rod 5/16 (1995 – 2005) – **XLR5/16\***  
- State overall length when ordering



Linkage Rod 8mm (from 2005) – **XLRM8\*** \$26.50 + GST  
- State overall length when ordering



Ball Joint 3/8 UNF (M x FM) studded (1970 – 1995)  
**BHBJE38UNFCF6Y**



Ball Joint 5/16 UNF (M x FM) studded – (1995 – 2005)  
**BHBJE168UNFCF6Y** \$10.41 + GST



(This is what we are using now) (from 2005)  
Ball joint M8x1.25 SQ8 style – **BHBJM8X125** \$9.09 + GST  
Ball joint M10x1.5 – **BHBJM1090**



Ball joint M8x1.25 in line – **BHBJM8180**  
Ball joint M10x1.5 in line – **BHBJM10180**

## Cage Parts & Components



Cage bottom cover plate steel - **XCBCP\***  
Cage bottom cover plate (wood for LVI) round - **XLVICBCPR\***



Pruning tool tray for cage 350x130x150 – **XPT\***



Small lynch pin Ø6 - **BCB2**

## Document Holders



Document Holder tube 320mm x 90mm – **BCB1970**

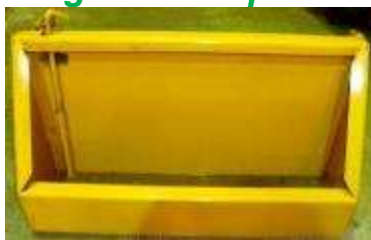


Document holder (Tablet Case), SS hinge pin, waterproof IP67, 2 clip board clips, holds A4 each side – **DOCCA\***

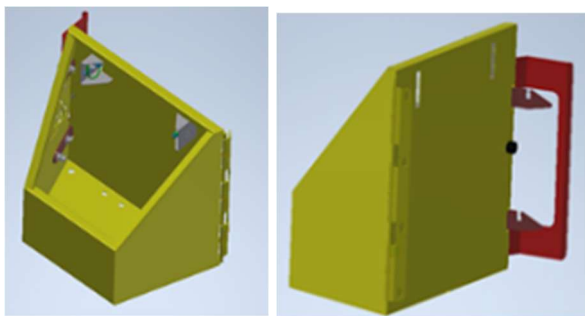


Squirrel Manual Pack (4) – **XMANUAL**

## Cage Gate & parts



Cage gate small with tray for SQ 355-805 - **XCG355\***



Cage gate large with tray & seat belt brackets for all SQ (from 2015) – **XCG007\*** \$443.76 + GST



Cage gate latch guard for all SQ (from 2015) – **XCGLG007\*** \$72.94 + GST

## Cage Gate Latches



Cage gate protruding latch 2 off for all SQ (from 2015) – **XCGPL008\***



Cage gate locking latch long and short for all SQ (from 2015) – **XCGLL008\***



Cage gate locking spacer bolt assembly, the long and short latches slide in these, for all SQ (from 2015) – **XCGLSBA008\***

## Latches



Gate Latch "D" ZP - **LHGL172D**

Snap hook gall 10mm - **LHSH10G**



HINGE 100x75x1.6 ZP Butt F/Pin - **LHBH100x75FP**

## Pinch Weld



Pinch weld 5mmx20- black - **PW5x20MMCH**

Pinch weld 12mmx25- black - **PW12MMCH**

## Bolt Protector



38mm Ø bolt protector, Base & Cap (for low voltage cages) – **PBCSB** \$3.41 + GST

## Conveyor Seatbelt (1965 – 2015)



Seat Belt complete for SQUIRREL – **XSB** \$117.00 + GST

Seat Belt, BACK HALF – **XSBBH**

Seat Belt, FRONT HALF - **XSBFH\*** \$48.00 + GST

Seat Belt Hook - **XSBH\***



Seat belt cage gate LV only SQ - **SBLVCG\*** \$50.00 + GST

## Conveyor Seatbelt (from 2015)



Seat belt front SQ 355-807 - **355-807SBF\***



Seat belt cage gate (rear) SQ 355-807 - **355-807SBCG\*** \$32.00 + GST



Conveyor belt green, PVC, 2 ply, 2mm thick, 700 wide used on LVI Squirrels behind cage over cage to boom bracket require 1.78m per cage - **CVPVC700WX2PR** \$75.60 + GST per M



Conveyor belt green, PVC, 2 ply, 2mm thick, 460 wide used on LVI Squirrels behind cage over cage to boom bracket – **CVPVC550WX2PR** \$72.18 + GST per M

## Squirrel Cages & Boom Brackets



Boom swivel bracket - cage end 355-805 for 1" pins (1995 – 2010) - **355-805BSWCE\*** \$906.72 + GST



Cage swivel pin - cage end 355-805 for 1" pins (1995 – 2010) - **355-805BS\*\*\*\*\*** \$..... + GST



Cage rotating pivot for Ø1" shaft, 05 series 2 Bolts or 3 Bolts - *State length when ordering* – **XSCR\*** \$72.00 + GST



Boom swivel bracket - cage end 355-805, 536, 656 & 806 for 30mm pins with 250mm deep cage (2010 – 2017) - **355-806BSWCE250** \$737.28 + GST



Boom swivel bracket - cage end 358, 508, 558, 678 & 818 for 30mm pins with 290mm deep cage (2017 and newer) - **358-818BSWCE290** \$737.28 + GST



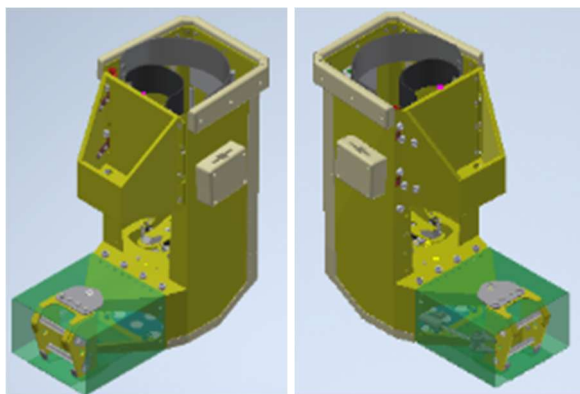
## Squirrel Cages & Boom Brackets



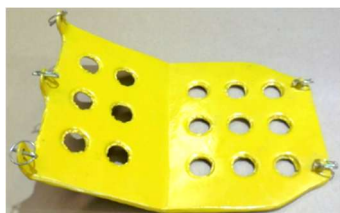
Cage swivel pin, Ø30mm x 324mm grip length for 290mm deep cage (2017 and newer)  
- **358-818CSP30X290** \$104.83 + GST



Cage swivel pin, Ø30mm x 267mm grip length for 250mm deep cage (2005 - 2017)  
- **355-806CSP30X250** \$104.83 + GST



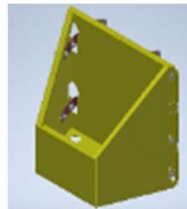
Squirrel LVI cage complete with; hyd valves, elect switches, boom the cage bracket, side swing ram, chain saw racks, cage gate, - **508-708LVICC**



Squirrel LVI cage bottom cover plate, - **XLVICBCPLR**  
\$550.00 + GST



Squirrel Std cage bottom cover plate, - **XCBCPH**  
\$158.53 + GST



Squirrel LVI cage gate, - **XLVICGLR**



Cage Top protector from solid nylon 40mm x 120mm, slot cut out for old seat belt hook – **XACTPSN\*** \$406.00 + GST

## Chain Saw racks



Holder for Chain saw & hedge trimmer- **XACNH** \$223.25+ GST

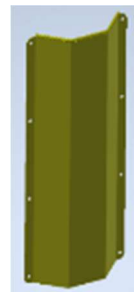
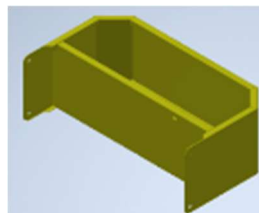


Bar Dip/Holder Steel for air saw & pole – **XACR**



Bar Dip/holder F/glass for air saw & pole - **XACRF\***

## Trays for Netting



Set of 3 trays for netting installing & repairs: Front tray for tools 275mm long x 510mm wide x 248 deep, Side tray for plastic clips 150mm long x 260mm wide x 600mm deep, Side for wire rope splices 150mm long x 210mm wide x 900mm deep, – **XTT3N\***



## Battery Clamps



Battery Clamp bottom foot type – **BACLAMP**



Battery Clamp side & top type – **BACLAMPST**



Battery Clamp both sides & top type – **BACLAMPBST**



Hose Clamp, two hoses - **HCSADSINGLE\***



Boom Hose Clamp, belting, steel clamp, bolt 10x100 & washer – **HCSBOOM\***



Fastener Large ZP steel o/centre (for engine bonnets 1980 -1995) - **LH703RL-Z**

## Boom Height sensor brackets



Boom height proximity switch mounting bracket protects sensor from damage.  
- **SBHPSMB\***



Boom height sensor 25mm spacer for Proximity switch ESPSLM42 –**SBHSS25\***



Boom height sensor 10mm spacer for Proximity switch ESPSLM42 – **SBHSS10\***

## Boom Reinforcing Brackets



Boom cage end reinforcer Ø24mm rod, ends taper off, bent in U shape to go around top of boom opening–

**XBCER24ROD\*** \$91.18 + GST



Boom cage end reinforcer 2 x 20mm rod X 200mm long bent in L shape – **XBCUR20ROD\*** per pair \$34.92 + GST

## Squirrel Drawbars



Drawbar suits 3.8m, 4.5m 6.5m SQ model (1970 – 2014)- **XD3.8\***



Drawbar with ball hitch 33mm Shaft, suits 3.8m, 4.5m 6.5m SQ model (1970 – 2014) - **XD4.5\***



Drawbar with ball hitch 50mm Shaft, suits 805 SQ model (2012 – 2016) – **XD805-16\***



Drawbar suits 505, 536, 655 SQ models (from 2014) – **XD505/655-14\***



Drawbar suits 656, 805, 806, 678, 818 SQ models (from 2014) – **XD656/806-14\***



Drawbar pin Ø22 x 280 max grip length to suits 656, 805, 806, 678, 818 SQ models (from 2014) – **XDP656/806-14\***

## Throttle actuator bracket



Vanguard 16-31HP non EFI engine throttle actuator bracket for 008 Squirrels – **XETAB008**



Vanguard 16-31HP non EFI engine throttle actuator bracket for 005 Squirrels - **XETB\***



Kubota engine throttle actuator bracket for 008 Squirrels - **EKD902ETM\***

Kubota engine base plate for 008 Squirrels - **EKD902EBK\*** \$792.48 + GST



Kubota D902 fuel pump / Filter and radiator overflow tank bracket **EKD902FPFROFB**



Kubota Fuel pump/filter offset low mount bracket. **EKD902FPFOLMB** \$22.60 + GST

## Kubota base plate & parts



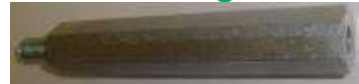
Kubota D902 Engine brackets kit without base plate, hydraulic pump bell housing, Engine to hyd pump coupling # CSRF55-115-35R, 2 x bell housing stand of extension 20mm hex spacers 10mm FM thread one end 8mm FM thread other end for air cleaner, 7 x bell housing stand of extension 20mm hex spacers 10mm FM thread both ends, throttle mount bracket, radiator mount, engine stands, Ø35mm stub shaft with 10mm key, exhaust extension pipe, exhaust clamp, all bolts, no engine springs; **EKD902EK\*** \$840.28 + GST

## Kubota base plate & parts



Kubota D902 Engine base kit with base plate up to and including 2015, hydraulic pump bell housing, Engine to hyd pump coupling # CSRF55-115-35R, 2 x bell housing stand of extension 20mm hex spacers 10mm FM thread one end 8mm FM thread other end for air cleaner, 7 x bell housing stand of extension 20mm hex spacers 10mm FM thread both ends, throttle mount bracket, radiator mount, engine stands, Ø35mm stub shaft with 10mm key, exhaust extension pipe, exhaust clamp, all bolts, 12 engine springs; **EKD902EBK\*** \$1,119.80+ GST

## Bell Housings



Bell housing spacing bolt 7/16 UFC male to 10mm female, suit Vanguard - Squirrel – **ESB716U-10XI45** \$21.58 + GST



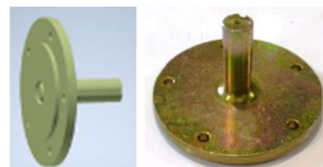
*(This is what we are using now)*

Bell housing kit, suit Vanguard - Squirrel - **XBHK\*** \$84.00 + GST

## Kubota Engine Components



Kubota D902 Bell housing D902, 2 x bell housing stand of extension 20mm hex spacers 10mm FM thread one end 8mm FM thread other end for air cleaner, 7 x bell housing stand of extension 20mm hex spacers 10mm FM thread both ends, **EKHKK\***



Kubota engine drive shaft Ø1" for all Kubota engine, *(up to 6-2024)* **EKD722SS**



Kubota engine drive shaft Ø35mm, 10mm keyway for all Kubota engine, *(from 7-2024)*– **EKD902SS35**



## Bell Housings



Bell housing kit suit Yamar – **XBHKY\***



Bell housing kit suit Honda – **XBHKH\***



Bell housing kit suit Honda 13 / 11 HP to group 2 hyd pump – **BH13P-G2P** \$115.26 + GST

## Planetary Drive Wheel Hub Bracket



Drive hub bracket for 505 from planetary wheel hub to RHS frame all made from 10mm plate includes all HT bolts & washers – **XSDHB505\***



Drive hub bracket for old chain drive 4.5m, 6.2m, 8m all made from 10mm plate **XSDHBCD\***



Drive hub spacer made from 6, 10 or 16mm plate **XSDHS\***

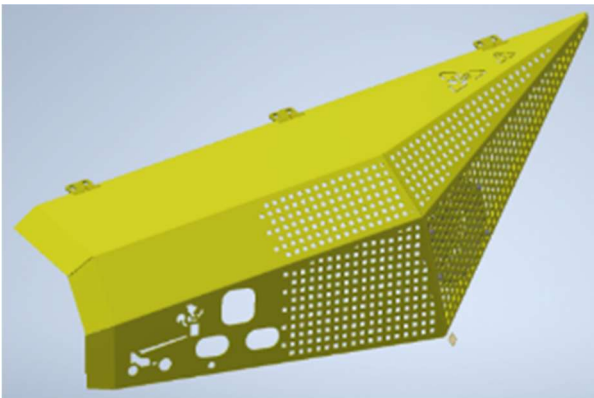
## Light Guards



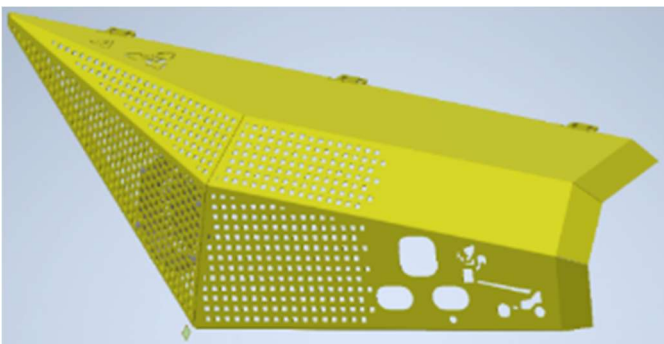
Steel cover for Amber Rotating Beacon - **XFLSC\***



Tail light guard (steel) - **XTLG\***



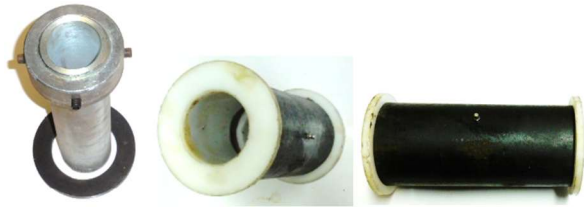
Squirrel left hand long bonnet 558 – 818, painted with hinges and holes for fans, (from year 2023) – **558-818-23SLBLH**



Squirrel right hand long bonnet 558 – 818, painted with hinges and holes for fans, (from year 2023) – **558-818-23SLBRH**



## Caster Wheel Up-grades



Caster wheel back box frame up-grade on older Ø2¼" end shafts, bush Ø114 x 11 wall x 300 long with grease nipple in, sleeve Ø 75mm outside-Ø2.25" inside x 350mm long, (this is welded over the old 2.25" shaft) includes 2 x Nylon bush (140 Flange 75id x92od) & steel collar ID Ø75mm x 40 long colour – **XCWPA75\*** **\$236.34 + GST**

## Caster Wheel Assemblies



Caster Wheel Assembly 355,805,656LB please advise shaft size and length (Ø 2.25" x ..... long or Ø 75mm x ... long) – **XCWH355-805\***



Squirrel Caster single Wheel Assembly for 678, includes 2 ton hub – **678CWA** **\$651.60 + GST**



Squirrel Caster Twin Wheel Assembly with top boss, bottom axle rocks sideways, (for 26x12x12" wheels) 558 & 818 – **558CWATB** **\$1,025 + GST**

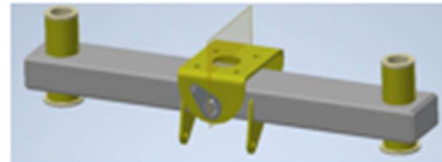
Squirrel Caster Twin bottom axle rocks sideways, (for 26x12x12" wheels) 558 & 818 – **508/818CWICR\*** **\$673 + GST**

## Caster Wheel Assemblies

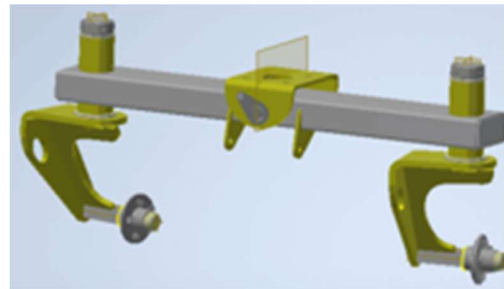


Squirrel 678 & 818 rear twin rigid caster wheel assembly (for 215/75R14" wheels) **678RTRCWA** **\$760.27 + GST**

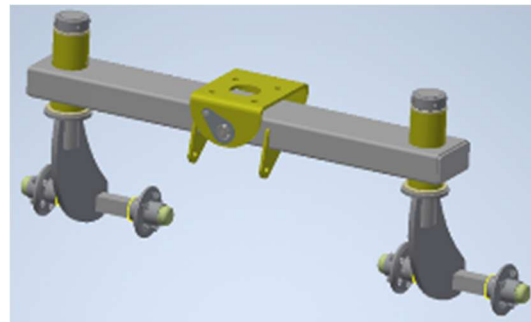
## Caster Wheel Cross Rocker Assemblies



Caster Wheel rocker cross axle frame, no caster wheels (for single 26x12x12" wheels or double 215 R14") – **678CWRCAF**

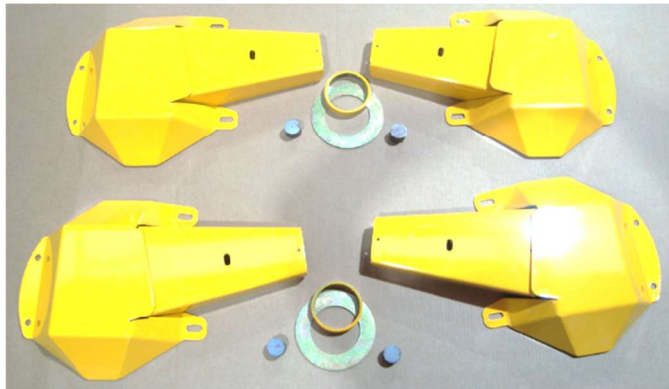


Caster Wheel rocker cross axle with 2 caster wheel assemblies 678 (for 26x12x12" wheels)– **678CWCRA**



Squirrel 678 & 818 rear Cross rocker with 2 x twin rigid caster wheel assembly **678RCWRTRCWA**

## Motor and Hose Covers



Squirrel 678 & 818 drive motor BMSY guards upgrade includes 2 x front high motor covers, 2 x rear high motor covers, 4 x hyd hose cover plate, 4 x boggy rocker stopper extension, 2 x boggy rocker spacer, 2 x boggy rocker extension washer, does not include the BMSY motors **XBDHMGUGK\*** \$640.52 + GST

## Paint



Touch up paint quick dry enamel 1 Lt for old Crendon yellow from 2020 – **BCB6127**



Touch up paint quick dry enamel 4 Lt for old Crendon yellow up to 2020 (Chamberlain Yellow B6128) - **BCB6128**



Touch up paint quick dry enamel 1 Lt for bright Crendon yellow from 2020 – **PTPAE1**



Touch up paint quick dry enamel 4 Lt for bright Crendon yellow from 2020 – **PTPAE4**

## Pulleys



Flat idler pulley single A or B, 3" x 5/8" ID bearing (1985-1995) - **PFIP3**



Bush 5/8" - 1/2" for flat idler pulley – **CHD6580**



A vee idler pulley single A, 3" x 5/8 & 1/2" ID bearing – **PUL5727**

## Pulleys Taper lock



Pulley SPA 63X1 Taper fix 1008 – **PTL63X1A-1008**  
Pulley SPB 100x1 Taper Fix 1610 – **PTL100X1B-1610C**

(For 13 CFM Compressor)

Pulley SPB 100x2 Taper Fix 1610 – **PTL100X2B-1610C**

(For 22 & 30 CFM Compressor)

Pulley SPB 112x2 Taper Fix 1610 - **PTL112X2B-1610**

Bush, Taper Fix 1008-1" – **PTLB1008-1**

Bush, Taper Fix 1108-25mm – **PTLB1108-25**

Bush, Taper Fix 1108-1" – **PTLB1108-1**

Bush, Taper fit 1610-40mm (to fit over cupping) CH – **PTLB1610-40CH**

## Rims Hot Dip Galvanizing



Rim 12 x 8.5 Orchard chain drive style, hot dip gall, sand blast & paint, 10mm centre, (for all chain drive)  
- **XRO12X10** \$176.10 + GST



Rim Ø12"x 8.5" Renold plan hub style 16 x Ø11 holes, hot dip gall, sand blast & paint, 10mm centre, (1995 – 2004) — **XRFWR12X8.5CH** \$205.56 + GST



Rim Ø12" x 8.5 Danfoss hub style 6 x Ø15 holes, hot dip gall, hot dip gall, sand blast & paint 10mm centre, (2004 – 2008) - **XRFWD12X8.5CH** \$205.56 + GST



(This is what we are using now 12" tyres) (from 2008)  
Rim Ø12" x 8.5 Crendon hub style 12 x Ø15 holes. hot dip gall, hot dip gall, sand blast & paint 10mm centre, -  
- **XRFWCM12X8.5CH** \$205.56 + GST



Rim blank Ø12" x 8.5" no centre 2.5mm hot dip gall,  
**XRB12x8.5CH** \$169.77 + GST



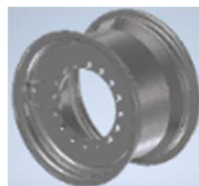
Rim Ø12" x 9 free wheel chain drive style -  
**XRFW12X10\***

## Rims Hot Dip Galvanizing



(This is what we are using for 558, 678 & 818, 31x15.5x15" Tractor grip tyres) (from 2012)

Rim Ø15" x 12" wheel 16 x Ø15 holes - CM plan hub style -  
**XRFW15X12**



(This is what we are using for Street Tree work 508 & 708, 31x13.5x15" & 33x12.5x15" tyres) (from 2021)

Rim Ø15" x 10" wheel 16 x Ø15 holes - CM plan hub style -  
**XRFW15X10CHHUB** \$251.57 + GST



Rim Ø14" x 5", 5 x Ø15 holes at 114.3mm Ford, hot Dip Galv - **TRR14X5FHGD** \$75.01 + GST



Rim Ø15" x 6", 5 x Ø15 holes at 114.3mm Ford, hot Dip -  
**TRR15X6FHGD** \$85.80 + GST



Rim Ø12" x 8.5", 5 x Ø15 holes at 114.3mm Ford, hot dip Gall - **TRR8x12HDG** \$110.92 + GST

## Rims



Rim Ø14" x 5 black HT (1995 – 2004) - **TRR14X5**



Rim Ø14" x 6 RANGER white Falcon (2004 – 2015) - **TRR14X6WCH**

## Rims Centres



Rim CENTRE CM hub for Ø 12" rim 6mm plate – **XRCM12\***



Rim CENTRE Orchard chain drive style 10mm plate - **XROC\***



Rim CENTRE small suits chain drive - **XRSC\***



Hole counter sunk washer set, used when you have big holes in rim centre- **XCSWS\***

## Drive Wheel Tyres



Tyre 26x1200x12-8PR tract grip, narrow lug t/less 8 ply - **TRTG26X1200X12C**  
\$200.26 + GST



Tyre 25x12.5x12-8PR bear claw grip, t/less 8 ply - **TRTBC25X12.5X12C**  
\$207.96 + GST



Tyre 31x15.5x15-8PR tract grip t/less 8 ply – (for 558, 678, 818, 536, 656 & 806) **TRTG31X15.5X15C**  
\$326.36 + GST



Tyre 26x1200x12-4PR turf block t/less 4 ply - **TRTB26X1200X12C** \$118.38 + GST

Tyre 26x1200x12-8PR turf block t/less 8 ply - **TRTB26X1200X12-8P** \$162.69 + GST



Tyre 31x13.5x15-8PR turf block t/less – (for drive wheel 508 & 708) **TRTB31X135X15-8**  
\$281.75 + GST



## Caster Wheel Tyres



Tyre 22 x 12 x 12 – 4ply turf block t/less *(for 358)* – **TRT22X12X12X12-6PR**



Tyre 215/75Dx14 8PR - **TRT215X75RX14C-8P**  
\$118.75 + GST



Tyre 25x10.00x12 6 ply AT Twill, load 600 kg each – *(for 536, 656 & 806)* **TRT25x10-12-6PR**



tyre 620mm Ø x 300mm wide x 12 ply, load 1200kg each, *(for 558, 678, 818, 536, 656 & 806) (from mid 2018)* **TRT26X12X12-12P**



Tyre 31x10.5x15-8PR road tread t/less – *(for caster wheel 508 & 708)*  
**TRT31X10.5XR15-8**  
\$173.08 + GST

## Tubes



Tube 26x1200x12 (TR13) - **TRTU26X1200X12**  
Tube 31x13.5/15.5-15 (TR13) – **TRTU31X13.5/15.**



Valve stem short - **TUV16** \$2.28 + GST



Tyre water filler – **TFA14** \$36.32 + GST

## Wheels Complete



Wheel complete Tyre & Rim, 590mm Ø x 250mm wide, *(2016 - 2018)* Rim 12" x 8.5" ford PCD, 0mm offset, hot dip galvanised fitted with Tyre 25x10.00x12, 6 ply load 600 kg each – **TRW25/10-12+8x1** \$171.00 + GST



Wheel complete: 165R13 8 ply road tread on 13" x 4", 0mm of centre, 5 x Ø15 counter sunk holes at 114.3 PCD, Ford PCD, hot-dip galvanised rim, *(for caster wheel 358 from 2025)* – **TRW165R13+RHDG** \$..... + GST

## Wheels Complete



Wheel complete: 215/75R14 8 ply road tread on 14" x 5", 0mm of centre, 5 x Ø15 counter sunk holes at 114.3 PCD, Ford PCD, hot-dip galvanised rim, 1120kg load rated each *(for caster wheel all 005, all 006 558, 678 & 818)* - **TRW215R14+RHDG** \$204.89 + GST



Wheel complete Tyre & Rim, 620mm Ø x 300mm wide x 12 ply, load 1200 kg each, *(from mid 2018)*; Rim 12" x 8.5" ford PCD, 30mm offset, hot dip galvanised fitted with Tyre 26x12.00x12 12 ply – **TRW26/12x12PRT** \$261.73 + GST



Wheel complete: 31" x 15.5" – 15" x 8 ply tractor grip tyre on 15" x 10.5" 10mm centre, 75-80mm of centre, 16 x Ø16 counter sunk holes at 220 PCD, valve guard, hot-dip galvanised rim - **TRW31\*15.5-15GC** \$507.97 + GST



Wheel complete Tyre & Rim, 560mm Ø x 300mm wide, *(for 358 Squirrel 2020 to 2025)* Rim 12" x 8.5" ford PCD, 12mm offset, hot dip galvanised fitted with Tyre 22 x 12 x 12, 4 ply – **TRW22X12X12X12GAL**

## Wheels Complete



Wheel complete: 33" x 12.5" – 15" x 6 ply 4x4 tread on 15" x 8.5" 10mm centre, 60mm of center, 16 x Ø16 counter sunk holes at 220 PCD, valve guard, hot-dip galvanised rim *(for drive wheel 508 & 708 before 2024)* - **TRW33\*12.5-15GC4X4T**



Wheel complete: 31" x 10.5" – 15" x 6 ply road tread on 15" x 6" 5mm centre, 0mm of center, 5 x Ø15 counter sunk holes at 114.3 PCD, Ford PCD, hot-dip galvanised rim *(for caster wheel 508 & 708)* - **TRW31\*10.5-15GC**



Wheel complete: 31" x 13.5" – 15" x 12 ply lawn tread on 15" x 9.5" 10mm centre, 60mm of centre, 16 x Ø16 counter sunk holes at 220 PCD, valve guard, hot-dip galvanised rim *(for drive wheel 508 & 708)* - **TRW31\*135-15GC\*** \$469.32 + GST