



Crendon Nominees Pty Ltd A/T/F
the Fry Family Trust T/A: Crendon Machinery
ACN 009 135 335 ABN 53 913 250 628

2 Ramsay Tce
PO Box 95
DONNYBROOK WA 6239

Ph: (08) 9731 1502
Toll Free: 1300 761 922
Fax: (08) 9731 1657
Email: info@crendon.com.au
www.crendon.com.au

Manufacturers and Designers of Horticultural and Viticultural Equipment

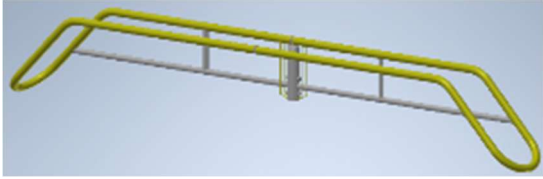
* **SQUIRREL** self propelled elevating platforms * **SADIE** vineyard & orchard sweepers * **NETWIZZ** netting retriever

NetWizz & Sadie Parts Catalogue



	Page #
NetWizz – Standard, High Lift, Swivel Head & Slim.....	2
Sadie – Single Sided & Double Sided	21

NetWizz Top – Std & Hi-Lift



New Style 4.8m Top Loop Complete for Slim & Std NetWizz, made from Ø60mm OD tubing, left half & right half with insert joiners **ZNWSTLC5*** \$1,761.28 +GST



Netwizz std & slim heavy duty top loop can make 8.5m or 5.5m. 8.5m made from 8 sections, 5.5m made from 5 sections, clamps to same mast – **ZNWHDTL8.5EK**



Replacement Centre Mast, for top loops, Std & Slim NetWizz, made from seamless tube 8mm wall thickness, from 2023– **ZNWCM8W** \$395.00 +GST



Centre top mid arm for standard NetWizz – **ZNWCTMA***



Extension arm for Std & Hi-lift NetWizz -**ZNWSHLEXTA***



End arm for Slim, Std & Hi-lift NetWizz – **ZNWEA***

NetWizz Top - Hi-Lift & Swivel Head



Mid-mast eye for Hi-lift & Swivel head NetWizz (up to 12-2016) – **ZNWHLME***



Extension for mid-mast eye for Hi-lift & swivel head (up to 12-2016) – **ZNWHLEME***

NetWizz Top - Hi-Lift



bottom-mast eye for Hi-lift & Swivel head NetWizz with 3 rollers (from 2017) – **ZNWHLBME***



Telescopic extension for Hi-lift NetWizz – **ZNWHLTE***



Top arm base for Hi-lift NetWizz - **ZNWHTLTAB**

NetWizz Top - Hi-Lift Swivel Head



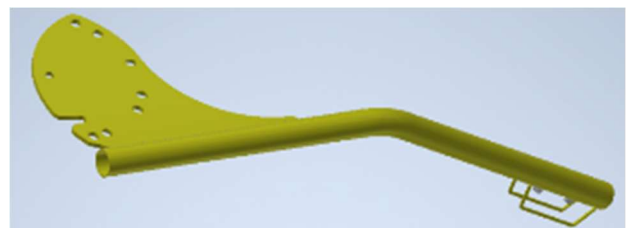
Telescopic extension for Hi-Lift swivel head NetWizz swivel plate fixed angle (up to 12-2016) – **ZNWHLSTE***



Telescopic extension for Hi-Lift swivel head NetWizz swivel plate adjustable angle (from-2017) – **ZNWHLSEIRHS** \$337.22 + GST



Side arm for Hi-Lift swivel head NetWizz (up to 12-2016) – **ZNWSA*** \$357 + GST

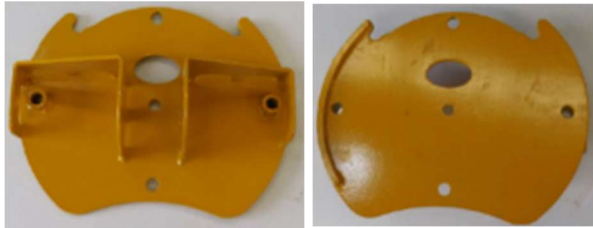


Right Hand Side arm for Hi-Lift swivel head NetWizz, heavy duty, 12mm bolts, HT plate, 60mm od x 3.2mm tube, (from-2017) – **ZNWSAR** \$419.46 + GST

NetWizz Top - Hi-Lift Swivel Head



Left Hand Side arm for Hi-Lift swivel head NetWizz, heavy duty, 12mm bolts, HT plate, 60mm od x 3.2mm tube, (from-2017) – **ZNWSAL \$419.46 + GST**



Arms swivel plate with adjustable head angle, Hi-Lift swivel head NetWizz, heavy duty, 12mm bolts, HT plate, 60mm od x 3.2mm tube, (from-2017) **ZNWHLSASB \$393.84 + GST**



Extension arm for Hi-Lift swivel head NetWizz – **ZNWHLSEA***



End arm for Hi-Lift swivel head NetWizz – **ZNWEASH \$91 + GST**



End net removal arm for Hi-Lift swivel head NetWizz – **ZNWHLSRA***



Centre top arm eye for Hi-Lift swivel head NetWizz with 2 rollers – **ZNWHLSCTAE***

NetWizz Top - Hi-Lift Swivel Head



Arms pins for Hi-Lift swivel head NetWizz **ZNWHLSAP**



Mast Rotating around handle assembly, High-Lift & swivel head NetWizz (from 2017) after **ZNWHLMRC**

Mast Rotating around handle assembly, High-Lift & swivel head NetWizz (up to 2016) after **ZNWHLMR***

NetWizz Top – Slim & Manual



Centre top mid arm for NetWizz slim & manual – **ZNWSCTMA***



End arm for Slim, Std & Hi-lift NetWizz – **ZNWEA***



Mast for NetWizz slim & manual – **ZNWSM***



Centre Mast for NetWizz slim & manual 50MGP – **ZNWSM***



Wand connecting rod NetWizz Slim – **ZNWSWCR***



NetWizz Slim Female drive– **ZNWSFD***

NetWizz Slim – Components



NetWizz Slim mast pole rotation assy– **ZNWSMPRA***



NetWizz Slim Spindle cover– **ZNWSCS** \$637.38 + GST

NetWizz – Components Std, Hi-Lift & Swivel Head



Spindle cover (1.05m) for Standard & Hi-Lift, 4mm x 300mm square reenforced centre, Ø8mm rod to outside frame, centre bearing held on with C-Clip – **ZNWSC** \$637.38 + GST



Drive Hub & Bearing for Spindle Cover– **ZNWSCDHB***
\$71.82 +GST

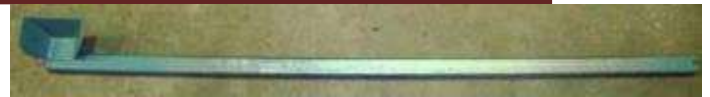
NetWizz – Components Std, Hi-Lift & Swivel Head



Bearing only 75 x 130x25 – **B6215.2ZCH**



Spindle Cover Insert NetWizz Std/Hi-Lift – **ZNWSCIS***



Spare Spindle Holder NetWizz ea – **ZNWSRCA*** \$98.00 + GST



Auto net sensor Std/high lift NetWizz (up to 12-2016) – **ZNWSAA***



Auto sensor disengaging handle up to 12-2016 (Std/Hi-Lift) – **ZNWASDH***



Auto sensor disengaging lockout lever 12-2016 (Std/Hi-Lift) – **ZNWLOLL***



Tension Screw, 10mm stainless steel thread – (up to 12-2016) NetWizz – **ZNWTSNEW** \$96.00 + GST

Tension Screw - NetWizz Old Style – **ZNWT**



PVC Star Knob 10mm, Bored & Tapped – **PVCSKM10X50** \$10.20 + GST



Round Knob Blk 10mm – **PVCKB10**
\$5.96 + GST

NetWizz – Components

Std, Hi-Lift & Swivel Head



Heavy Duty Motor Uni Joint Square spindle drive complete, outer RHS tube 8mm thick 04 NetWizz – **ZNWSDU04CH***
\$119 + GST



Motor Uni Joint Square spindle drive 40mm square x 70mm NetWizz – **ZNWSDSEC***



Heavy Duty Motor Uni Joint spindle drive outer coupling NetWizz, *now 9mm thick RHS* – **ZNWSDOC***



Motor Uni Joint Square spindle drive motor half 40mm square x 40mm with bolts, NetWizz – **ZNWSZD40C***



Motor Square Drive 60mm (Old NetWizz) – **ZNWSD60***



High lift swings up arm against telescopic mast pin (Hi-Lift only) – **ZNWHLSUAP***

NetWizz – Components

Std, Hi-Lift & Swivel Head



Gas strut, stainless steel for Standard & Hi-Lift, 700Nm, 585 open length, **GST700N585SS** \$73.64 + GST
NetWizz stainless steel, Slim Gas strut, 700Nm, 375 open length – **GST700N375SS**



Wand connects. Rod assembly with bearing & bolt, (up to 2017) (Std/Hi-Lift) – (up to 12-2016) **ZNWWCRA*** \$204 + GST



Wand connects. rod assembly no bearing OR bolt, (up to 2017) (Std/Hi-Lift) – **ZNWWCRANB*** \$123 + GST



Nylon Bush for Wand connect rod, 32.5 od x 20 id 40 long, (up to 2017) (Std/Hi-Lift) – **ZNWB20x33x40***



Wand connect. (From 2017 on) (Std/Hi-Lift) – **ZNWWCRANB17*** \$127 + GST



Worm drive crank to wand link APROX 360 centres (from 2023) – **ZNWSWDCTWLEK**



Wand bearing housing 16mm thread from 2016 on (Std/Hi-Lift) – **BHE04/204**



Wand bearing housing 3/4 BSPT thread (up to 12-2016) (Std/Hi-Lift) – **BHB204**

NetWizz – Components

Std, Hi-Lift & Swivel Head



Wand crank plate (up to 12-2016) (Std/HiLift) – **ZNWCP***
Wand crank plate from 2017 (Std/HiLift) – **ZNWCP17***



Worm drive crank plate assembly, Ø35 bore, with grub screws & shear bolt (from 2023) – **ZNWSWDCP35AEK**



Bottom Wand arm with roller all (Std/Hi-Lift) – **ZNWBWAR*** \$154 + GST



Wand oscillating arm base (old std & high lift) – **ZNWWOABOS***



Wand oscillating arm base (from 2017) (Std/Hi-Lift) – **ZNWWOAB....***



Bottom Mast post cap for all Std NetWizz & 2023 Slim NetWizz – **ZNBMPC**

NetWizz – Legs

Std, Hi-Lift & Swivel Head



Bottom swing up Leg from 2021– **ZNWLSU20**



Bottom swing up Leg pin, Ø12mm, with R clip from 2021– **ZNWLSUP20** \$8.85 + GST



Sharpe curved Leg to 2015 old style please advise front or rear leg– **ZNWLC***
Straight Leg – **ZNWLS***



Long curved Leg for 2015 to 2020 front or rear leg– **ZNWLCF***

NetWizz – Components

Std, Hi-Lift & Swivel Head



NetWizz rollers with end tabs welded on, centre shaft, grease nipples – **ZNWRT*** \$77 + GST



NetWizz rollers with centre shaft and grease nipples please give length when ordering – **ZNWR*** \$57 + GST



NetWizz rollers bush and grease nipples – **ZWNRG***

NetWizz – Components Std, Hi-Lift & Swivel Head



NetWizz hyd motor disengaging handle (up to 12-2016) – **ZNWHMDH***



NetWizz hyd motor disengaging handle (from 2017) – **ZNWHMDHF17***



Mast rotating Pin & shear bolt assembly, comes with either Ø20mm or Ø24mm locking pin– **ZNWMRPSBA***



NetWizz hyd motor spindle plate no motor (up to 12-2016) – **ZNWHMSP*** \$177.29+ GST



NetWizz hyd motor spindle plate no motor (from 2017) – **ZNWHMSPF17***



Mast Rotating from 10mm plate Std/Hyd NetWizz – **ZNWSHMRP*** \$111 + GST

NetWizz – Components Std, Hi-Lift & Swivel Head



NetWizz Std Mast height Rotating Assy– **ZNWSHMRA***



Spring for mast rotating shear bolt assembly locating pin (all models) – **ZNWRM12*2*50**



Spring for (standard mast only) rotating plate locating pin – **ZNWSHRPS25*2*20**



1" pin for Wand 2016 and after – **ZNWPIN1x203**



Shaft Locking Pin 3/8x2.25" - **BCB6101**



Linch Pin 6mm - **BCB2**
Linch Pin 11mm – **BCB6**



Implement Pin Cat 1-2 (1" Nut) - **BCB205**



Top link pin, Ø3/4" & Ø1", with linch pin from 2017, - **ZNWTLP17**

NetWizz – Components Std, Hi-Lift & Swivel Head



Bottom link pin, Ø7/8" & Ø1 1/8", with linch pin, from 2017 - **ZNWBLP17**



Toplink Pin 1"x4.5" CAT 2 - **B81**
Top Link Pin 3/4"x3-7/8" CAT1 - **BCB74**



Top link Pin 1"x3" CAT2 - **BCB1200**
Top Link Pin 3/4"x3-7/8" CAT1 - **BCB74**



Drawbar Pin 5/8"x4-1/4" - **BCB3078**



Droplock 1/2"x1-3/8" UNF bolt-in - **B6124**



Roll Spike – **ZNWRS** \$315.00 + GST



Exhaust guard – **ZNWEG**



Wire rope Pulley Steel (V-Idler) 3"x1A Ø1/2" PUL1247-
PFIV3X1AX12S



Spindle 1.1m – **ZNWS1.1**
Spindle 1.4m – **ZNWS1.4**

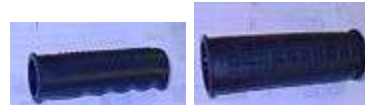
NetWizz – Components Std, Hi-Lift & Swivel Head



Document Holder tube 320mm x 90mm – **BCB1970**



Document holder (Tablet Case), SS hinge pin, water proof IP67, 2 clip board clips, holds A4 each side – **DOCCA***



Handle Grip 25mm PVC – **PVCHG25**
Handle Grip 1-3/8" PVC – **PVCHG1.14** \$9.36 + GST



Winch 350kg, 4.1:1, light duty, Ratch - **WIN54**



Winch 750kg, very heavy duty, with 5mm stainless steel wire rope 4.1:1 Ratch – **WIN1600EK** \$120.84 + GST



Wire Rope Galv 6mm 7x19 – **WRGAL06-7X19**



Worm drive RV90-20DZ, 20:1, input hyd motor flange, Ø35 output shaft (from 2023) – **GBRV90-20DZ** \$713.47 + GST

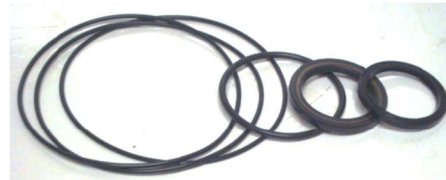


Taper bearing on the input worm drive shaft, 32008 40x68x19 mm (from 2023) – **BT32008** \$..... + GST

NetWizz – Hydraulics



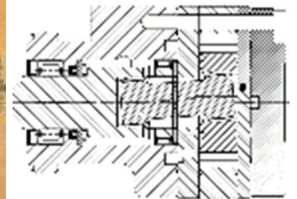
Hyd motor for worm drive gear box 80cc 2blt flange, 1" straight shaft, 1/4" keway, 7/8UNF ports, no case drain, Like BMPH-80-H2-K-S-B-O (from 2023) - **BMPH80H2KSBO**



Seal kit for

Hydraulic Motors – TPF BMER-2

High performance 3,000 psi shaft seals, Low speed & four bearings



Hyd motor TPF 375cc BMER-2-375-MS-RW 6blt flange 1" shaft 7/8UNF ports (from 2019) - **MHC BMER23754B1S** \$811.75 + GST

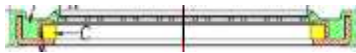


NetWizz – Hydraulics

Seal kit for BMER-2 hydraulic motor, rated to 200 bar – **MHCBMER2-SK**



Shaft seal HP BMER-2 hydraulic motor rated to 200 bar, 35 id x 48 od x 4.72 wide – **MHCBMER2SS200**

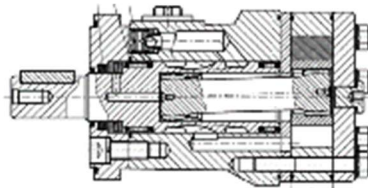


Shaft seal HP BMER-2 hydraulic motor special made rated to 300 bar, 35 id x 48 od x 4.72 wide – **MHCBMER2SS300**



Woodruffe Key 1x ¼" – **KW1/4X1**

NetWizz – Hydraulics Hydraulic Motors – TPF BMRS



Hyd motor TPF BMRS400; 395cc, 2 bolt flange, 1" shaft with ¼" keyway, 7/8UNF ports, low speed, high radial load, 250 bar shaft seal. (from 2000 – 2019) – **MHCBMRS4002B1S** \$502.11 + GST

Hyd Motor TPF Parts



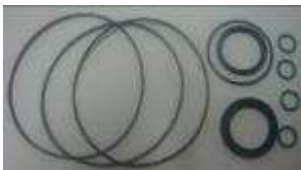
Shaft seal HP BMRS hyd mtr 28.56×39x5.5 – **MHCBMRSPSS**



Dust seal HP for BMRS hyd mtrs – **MHCBMRSDS**



Shaft bearing kit for BMRS hyd mtrs - **MHCBMRSSB**



Seal kit for BMRS-N hydraulic mtrs - **MHCBMRSSK**



Woodruffe Key 1x ¼" – **KW1/4X1**

Hyd Motor White RS Parts



Seal Kit WHITE RS (Short) picture left – **MWRSSKS**
Seal Kit WHITE RS (Full) picture right – **MWRSSKF**

NetWizz – Hydraulics



Thrust Bearing WHITE HS/RS – **MWRSTB**



Key steel 1x ¼" – **KS1/4X1"**

Hyd Motor Danfoss Parts



Seal kit Danfoss OMP 151-1279 – **MHDOMP80SK**



Seal kit Danfoss OMR 151-1280 – **MHDOMRSK**



Dust seal for OMP/OMR 151-131300 – **MHDOMPDS**

NetWizz – Hydraulics



Shaft seal HP for OMP/OMR 633B036100 – **MHDOMPSS**

Hyd Motor Senwei Parts



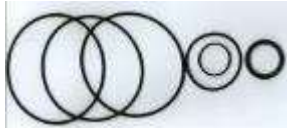
Thrust bearing & washer OMRS- **MHCOMRSTBW**



Needle roller bearing OMRS – **MHCOMRSNRB**



Bearing for shaft OMRS – **MHCOMRSSB**



Seal kit for Senwei OMRS hyd mtrs – **MHCOMRSSK**

Hyd Motor M&S



Hyd mtr HR400 1" shft 7/8 PORT 2B FI – **MHHR400C4UC**



Seal kit MLHR motors 1¼" shaft – **MHMLHRSK**

Seal kit HP motors – **MHHPSK**

Seal kit HR motors – **MHHRSK**



Woodruffe Key 1x ¼" – **KW1/4X1**

NetWizz – Hydraulics



Flow Control Valve ITI 16GPM ½" CH - **VFC16G12NRCH**

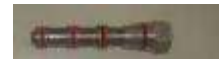


O-ring for Prince Flow control valve (up to 2010) – **ORBS116**

O-ring for ITI Flow control valve – **ORBS020**



Flow proportional splitter complete 3/8" BSP 4:1 CH – **VFD4:1CH \$220.50 + GST**



Seals for Flow proportional splitter, 8017N9, 8018N9, 018N7, 017N7 – **VFDSKCH**



In line pressure filter – reversing ½" BSP 40 micron – **FILP12-40**



Hydraulic mast ram "EuroKing" 305 x 63, push rod 35, ((2018-2020)) – **RMEK63X35X305**



Hydraulic mast ram seal kit "EuroKing" Ø63 piston, Ø 35 push rod (2018-2021) – **RMSKEK63X35**

NetWizz – Hydraulics

This is what we use now - 10,000 psi seals, nylon wear rings, industrial quality

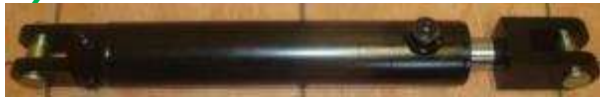


Hydraulic mast ram "EuroKing" 370 x 63, push rod 35, (from 2022) – **RMEK63X35X370**



Hydraulic mast ram seal kit "EuroKing" Ø63 piston, Ø 35 push rod (from 2022) – **RMSKEK63X35-22**

Hydraulic Rams – Dantal from 2018



Hydraulic mast ram "Dantal" 305 x 63, push rod 36, (after 2016 - 2018) – **RM63X36X305**



Seal kit for ram "Dantal" 63x36 – **RM63X36SK**

Hydraulic Rams – Titan parts 2008 to 2016



Seal kit for Titan rams 12x2.5x1.25" – **RCHSK2.5X1.25**

Hydraulic Rams – Baker parts pre 2008



Seal Kit 2.5"BX1.25" BAKER - **RBSK2.5X1.25**

NetWizz – Bearings & Bushes



Wand crank Nylon bush HDPE 32.7ODx25.8IDx45mm long – **NB1CH**



Nylon Bush for Wand connect rod, 32.5 od x 20 id 40 long, (up to 2017) (Std/Hi-Lift) – **ZNWB20x33x40***



Bearing Hsg Hanger ¾" BSPT HA/HB/EH204 – **BHB204**



Wand bearing housing 16mm thread from 2016 on (Std/Hi-Lift) – **BHE04/204**



Bearing ¾" UC204-12S – **BUC204-12S**
Bearing 20mm UC204 from 2016 – **BUC204**



Spindle cover bearing 130X75X25mm with steel shield

6215.2Z - **B6215.2Z**

Spindle cover Circlip, external 75mm x 2.5mm - **CEXT075**

NetWizz Slim – Parts



NetWizz Slim V Belt B94 - **VBB94**



NetWizz Slim Bearing Hsg Flange 4hole F209 - **BF209**

NetWizz Slim Bearing 1 3/4" UC209-28S –

BUC209-28S



Spindle shaft pulley NetWizz Slim – **ZNWSSSP***



Wand crank pulley complete with bearings (Slim) up to 2020 – **ZNWSWCP***



NetWizz Slim Retainer for Duofix #2 BR2 - **PTLRBR2**

NetWizz Slim Bush, Duofix #2 - 42mm BB242 - **PTLBB242**

NetWizz Slim Bearing 42mmODx20mmIDx12mm - **B6004-2RS**



NetWizz Slim – Parts



NetWizz Slim Pulley Flat Idler 3" plastic PUL10147 - **PFIP3**



Rod end 12mm Female NetWizz Slim (from -2017) – **BHBJM12F**



Rod end 1/2" UNF Male - Female NetWizz Slim (up to 12-2016) **BHBJ12UNFCH**



NetWizz slim Crank arm with rod ends (up to 2020) - **ZNWSWCL***



NetWizz slim mast base - **ZNWSMB***



NetWizz Slim Female drive (up to 2020) – **ZNWSFD***



NetWizz Slim mast pole rotation assy– **ZNWSMPRA***

NetWizz Slim Heavy duty, from 2023 – Parts



Wand crank pulley complete with bearings, bolt, washers, nuts (from 2020 for Slim) – **ZNWSWCPB350EK**



NetWizz Slim Spike Ø45 for drive & bearings then Ø43 made from 40Cr square drive, with motor drive cupping, pulley, Ø45 bearings & housings complete (for all Slims)

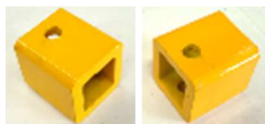
ZNWSSEK \$1205.67 + GST



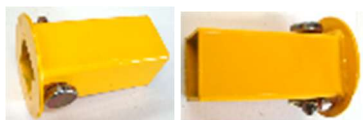
NetWizz Slim Spike Ø45 for drive & bearings then Ø43 made from 40Cr square drive, hole for pulley & square drive (for all Slims) – **ZNWSSEK** \$992.91 + GST



NetWizz Slim pulley ID Ø45 1BX90 for drive (from 2022 for Slim) – **ZNWSPB90EK**



NetWizz Slim Hyd motor to Spike drive with hole to match spike square drive (from 2020 for Slim) – **ZNWSHMSPWEK**



NetWizz Slim Spike drive to spinal cover (for all Slims) – **ZNWSDSCEK**



NetWizz Slim Spike drive tapered pin (for all Slims) – **ZNWSDTPEK**

NetWizz Slim Heavy duty, from 2023 – Parts



NetWizz Slim heavy duty sensor arm (from 2022 for Slim) – **ZNWSHDSA EK**



NetWizz Slim heavy-duty wand crank arm connecting link complete with 12mm rod ends (from 2022 for Slim) – **ZNWSHDWCAEK**



NetWizz Slim tension idler 1B x 75 flat complete with bearings & bolts (for all Slims) – **ZNWSSTIB75CEK**



NetWizz Slim heavy duty net sencer to flow control (from 2022 for Slim) – **ZNWSHDNSTFCB** \$82.00 + GST

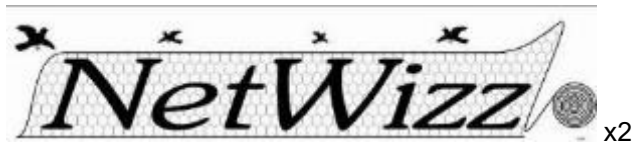


NetWizz Slim heavy duty flow control arm (from 2022 for Slim) – **ZNWSHDFCAB** \$59.13 + GST



NetWizz Slim net sencer gas strut mount arm (from 2022 for Slim) – **ZNWSNSGSMB** \$59.45 + GST

NetWizz – Stickers All



Pt# DSNWLOGO



Pt# DSDANGER



Pt# DSSAFETYMAN



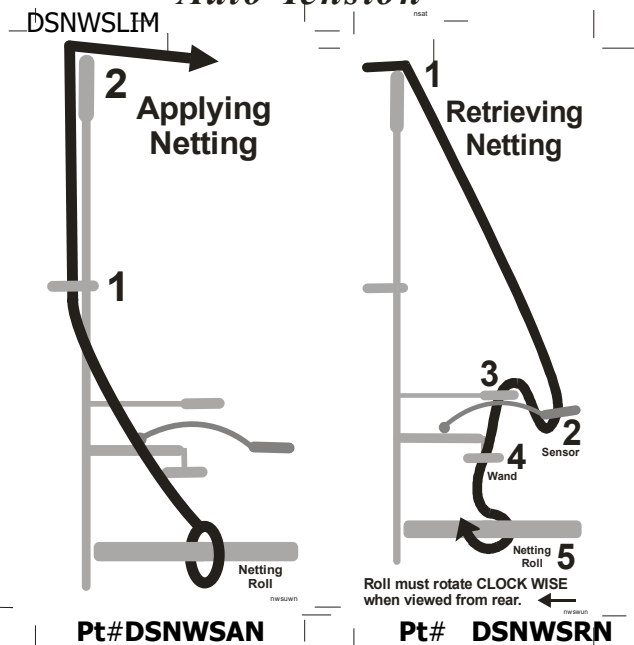
Pt# DSNWCAUSLOP

Sticker NetWizz Slim sticker set - **DSNWSSET**
 Sticker NetWizz Std sticker set - **DSNWSTDSET**
 Sticker NetWizz HiLift sticker set - **DSNWHLSET**
 Sticker NetWizz HiLift Swivel Head sticker set - **DSNWHLSHSET**

NetWizz Slim – Stickers up to 2021

Slim

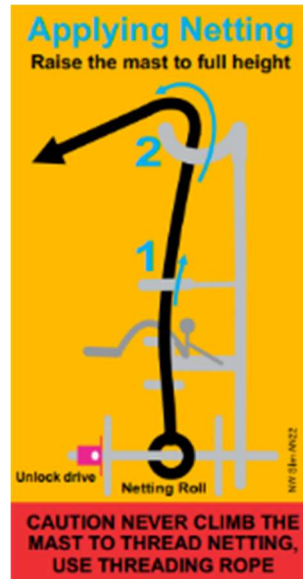
Auto Tension



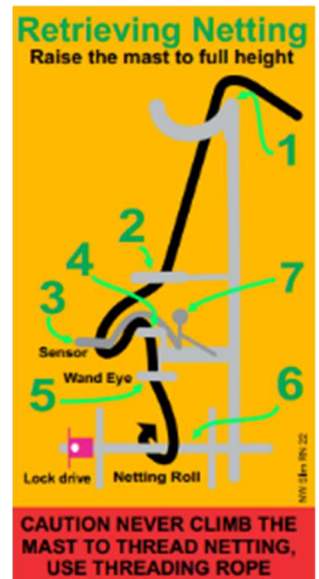
Pt# DSNWSAN

Pt# DSNWSRN

NetWizz Slim – Stickers after 2022



Pt# DNWSLIMAN22



Pt# DNWSLIMRN22



Pt# DNWSLIMRN2-22



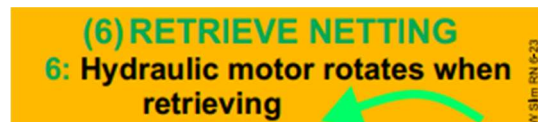
Pt# DNWSLIMRN3-22



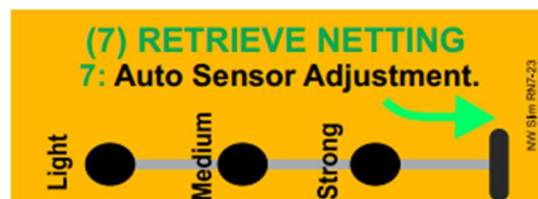
Pt# DNWSLIMRN4-22



Pt# DNWSLIMRN5-22



Pt# DNWSLIMRN6-22



Pt# DNWSLIMRN7-22

NetWizz Slim – Stickers after 2022

(1) APPLYING NETTING

- 1: Feed through this top frame eye.
- 2: Feed over the top of mast arms.

NW Slim AN-23

Pt# DNWSLIMAN1-22

Spindle Drive

For retrieving netting slide this end over end of spindle cover & pin

For Applying netting have this face against spindle cover & pin

NW Slim SD-23

Pt# DNWSLIMSD-22

TO ROTATE MAST

1: Hold the mast rotating handle.

2: Pull the mast pin rope

2: Then rotate the mast using the handle and allow mast pin to re-lock.
Every slot is 30°

This locating pin assembly has two shear bolts - 8mm x 30mm

Caution ensure the mast rotating pin is locked in after rotating mast.

TO RAISE MAST

Disengage the height locking pin by rotating side handle up then use the winch to raise, ensure the winch ratchet is correctly engaged.

When you have fully raised the mast, re-pin height locking pin.

When lowering the mast, wind it down, never allow the winch to free run.

NW Slim TRM-23

Pt# DNWSLITRM22

NetWizz – Stickers Std, High Lift & Swivel Head



x4

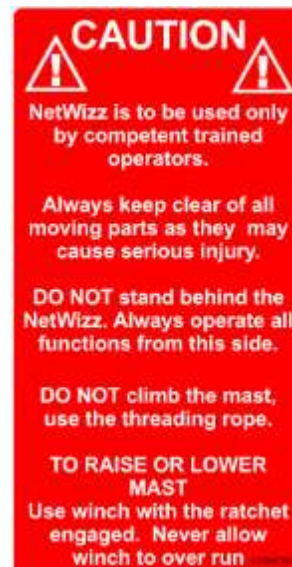


x6

Slide out fully to carry second roll.

x2

Pt# DSNWSRL

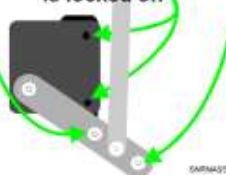


Pt# DSNWCAUTRA

RETRIEVE NETTING AUTO SENSOR SPEED & REACTION TIME.

To wind in faster use near hole on flow control.
If the speed over reacts use far hole.

Loosen bolts & raise or lower flow control so that it turns off when sensor is locked off



Pt# DSNWSRNASS

RETRIEVE NETTING

Roll Profile Settings.
Shorten crank setting for more netting in roll centre.
Lengthen crank setting for more netting on roll ends.

To centralise netting
Adjust connecting thread

Refer to manual.



RETRIEVE NETTING

Roll Width Settings.
Shorten wand for Narrow roll.
Lengthen wand for Wide roll.
If you widen the NetWizz & use 1.4m spindles lengthen this wand.

Pt# DSNWRN6

TO ROTATE MAST

- 1: Pull the mast pin rope,
- 2: Then rotate the mast using this handle and allow pin to re-lock. Every slot is 15°
- 3: This handle is then raised to reposition for more mast rotation.

This locating pin assembly has a shear bolt - 10x25

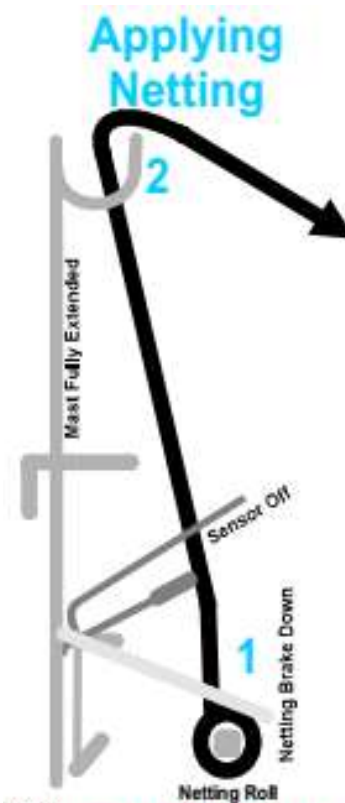
Caution ensure the mast rotating pin on this rope is locked in before repositioning the handle.

Pt#DSNWRM

Netwizz – Stickers Std Mast

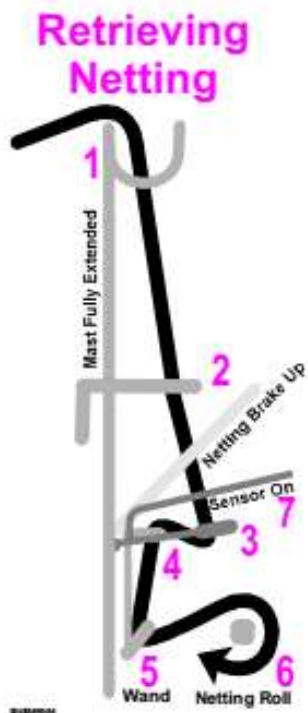
Std Mast
Auto Tension

-PT# DSNWSTD



**CAUTION NEVER CLIMB THE
MAST TO THREAD NETTING,
USE THREADING ROPE**

DSNWAPPNET



CAUTION NEVER CLIMB THE MAST TO THREAD NETTING, USE THREADING ROPE

NEVER WIND UP NETTING WITH OUT USING THE AUTO SENSOR

Pt# DSNWRETNET

NetWizz – Stickers Std Mast

(1) APPLYING NETTING

- 1: Slide brake out & lower onto roll to reduce any over-run.

Pt# DSNWHLA1

(1) APPLYING NETTING

- 1: Slide brake out & lower onto roll to reduce any over-run.
- 2: Then over the top of mast arms.

Pt# DSNWAN3

(2) RETRIEVE NETTING

- 1: Feed over the top of mast arms.
- 2: Then through this eye.

Pt# DSNWRN2

(3) RETRIEVE NETTING

- 3: Feed through this sensing eye.

Pt# DSNWRN3

(4) RETRIEVE NETTING

- 4: Feed through this bottom eye.

Pt# DSNWRN4

(5) RETRIEVE NETTING

- 5: Feed through this wand eye.
- 6: Wrap around spindle.

Pt# DSNWRN5

(6) RETRIEVE NETTING

- 6: Lock spindle motor in over bolt, to unlock lift over.

Pt# DSNWSRN6

(7) RETRIEVE NETTING

- 7: Auto sensor is unlocked by raising this handle and pushing the latch lever.
- To lock off, raise this handle and pull the latch lever.

Pt# DSNWRN7

(8) RETRIEVE NETTING

- 8: spindle motor rotate this way.

Pt# DSNWRN8

(8) RETRIEVE NETTING

- 8: Auto Sensor Adjustment. For tension adjustment, Screw adjustment - nut.



Pt# DSNWSRN8

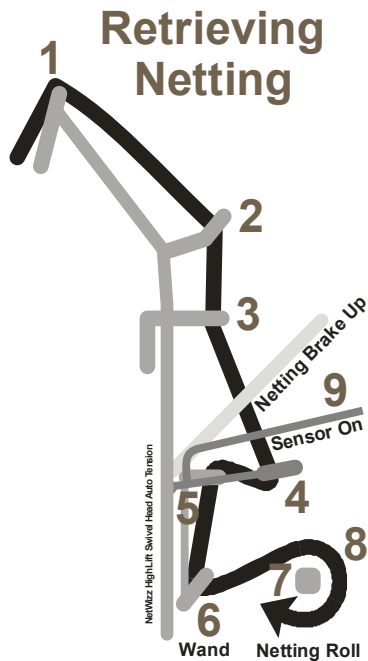
TO RAISE OR LOWER MAST
Disengage the height locking pin by rotating side handle up and then use the winch.

Pt# DSNWRLM

NetWizz - Stickers High Lift

High Lift Mast Auto Tension

Pt# DSNWHLWORD

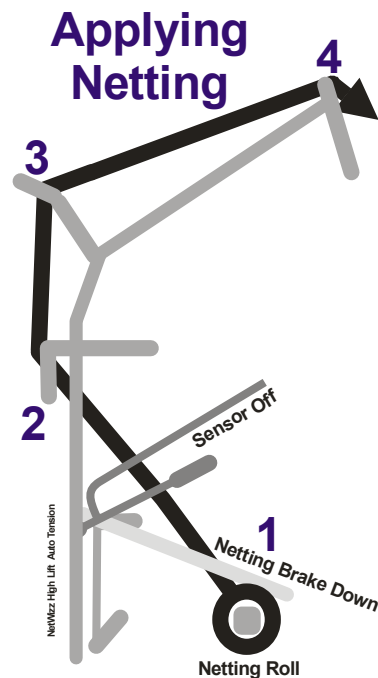


CAUTION NEVER CLIMB THE MAST TO THREAD NETTING, USE THREADING ROPE

NEVER WIND UP NETTING WITH OUT USING THE AUTO SENSOR

SNWHLR0

Pt# DSNWHLR0



CAUTION NEVER CLIMB THE MAST TO THREAD NETTING, USE THREADING ROPE

SNWHLA0

Pt# DSNWHLA0

NetWizz - Stickers High Lift

(1) APPLYING NETTING

- 1: Slide brake out & lower onto roll to reduce any over-run.

SNWHLA1

Pt# DSNWHLA1

(2) APPLYING NETTING

- 1: Lower net brake.
- 2: Feed through this eye first,
- 3: Through telescopic mast eye.
- 4: Then over the top of mast arms.

SNWHLA2

Pt# DSNWHLA2

(3) RETRIEVE NETTING

- 1: Feed over the top of mast arms.
- 2: Bottom mast eye.
- 3: Then through this eye.

SNWHLR3

Pt# DSNWHLR3

(4) RETRIEVE NETTING

- 4: Feed through this sensing eye.

SNWHLR4

Pt# DSNWHLR4

(5) RETRIEVE NETTING

- 5: Feed through this bottom eye.

SNWHLR5

Pt# DSNWHLR5

6 RETRIEVE NETTING

- 6: Feed through this wand eye.
- 7: Wrap around spindle.

SNWHLR6

Pt# DSNWHLR6

(7) RETRIEVE NETTING

- 7: Lock spindle motor in over bolt, to unlock lift over.

SNWHLR7

Pt# DSNWHLR7

(8) RETRIEVE NETTING

- 8: spindle motor rotate this way.



SNWHLR8

Pt# DSNWHLR8

(9) RETRIEVE NETTING

- 9: Auto sensor is unlocked by raising this handle and pushing the latch lever.
- To lock off, raise this handle and pull the latch lever.

SNWHLR9

Pt# DSNWHLR9

(10) RETRIEVE NETTING

Auto Sensor Adjustment.
For tension adjustment, Screw tri-nut.



SNWHLR10

Pt# DSNWHLR10

NetWizz - Stickers High Lift

High Lift Mast

EXTEND MAST LENGTH

- 1: Lower end of mast to 1.5m from ground.
- 2: Undo 2 x telescopic clamp bolts.
- 3: Remove both telescopic mast pins and carefully extend to the fullest length.
- 4: Re-pin & re-clamp.

RETRACT MAST LENGTH

- 1: Lower end of mast to 0.5m from ground
- 2: Undo telescopic clamp bolts.
- 3: Remove both telescopic mast pins and carefully retract (using 2 people) to the shortest length,
- 4: Re-pin & re-clamp.

OPEN TOP ARMS

- 1: Lower end of mast to 1m from ground.
- 2: Remove 20mm long pin.
- 3: Swing down and lock in with latch.
- 4: Lock latch with small lynch pin.
- 5: Repeat this for the other arm

DSNWHLEML

Pt# DSNWHLEML

High Lift Mast & Swivel Head

EXTEND BOTTOM MAST EYE

- 1: Extend bottom mast eye on telescopic slide with one clamp bolt.

ADJUST ARMS LENGTH

- 1: Lower end of mast to 1m from ground.
- 2: Loosen 2 x tube clamp bolts on end base arms.
- 3: Slide end arms to right length and retighten tube clamp bolts.
- 4: Extension arms can be fitted the each side is required.

Then raise the mast and rotate the required height, each mast main pole slot setting is 15°

CAUTION NEVER CLIMB THE MAST TO THREAD NETTING, USE THREADING ROPE

CAUTION TAKE EXTREME CARE WHEN WORKING ON SLOPING TERRAIN.

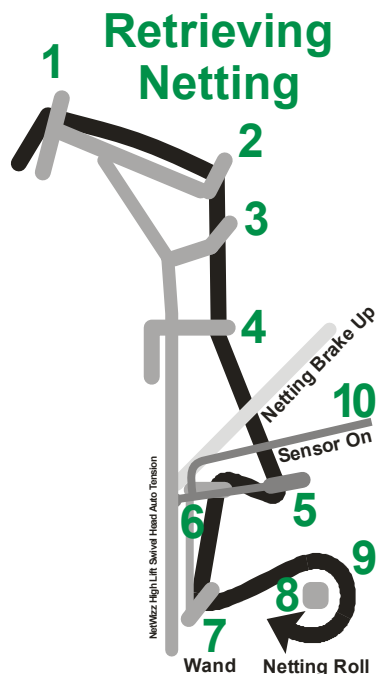
ALWAYS BE AWARE OF ANY OVERHEAD POWER LINES, TRACTOR CAB AND BRANCHES.

Pt# DSNWHLSWEBME

NetWizz - Stickers High Lift Swivel Head

Netwizz Hi Lift Mast Swivel Head -

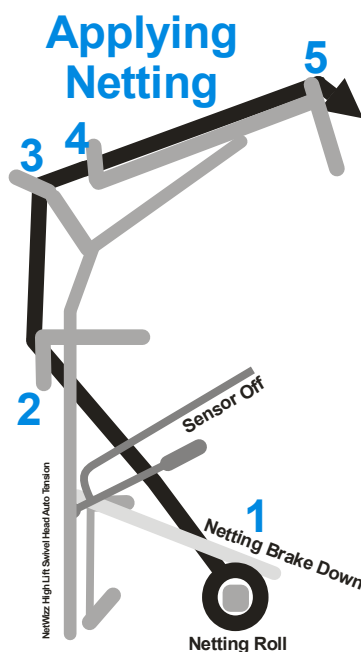
Pt# DSNWHLWORD



CAUTION NEVER CLIMB THE MAST TO THREAD NETTING, USE THREADING ROPE

NEVER WIND UP NETTING WITH OUT USING THE AUTO SENSOR

Pt# DSNWHLR0



CAUTION NEVER CLIMB THE MAST TO THREAD NETTING, USE THREADING ROPE

Pt# DSNWHLA0

NetWizz - Stickers High Lift Swivel Head

(1) APPLYING NETTING

1: Slide brake out & lower onto roll to reduce any over-run.

DSNWHLA1

Pt# DSNWHLA1

(2) APPLYING NETTING

1: Lower net brake.
2: Feed through this eye first,
3: Through bottom mast eye.
4: Through telescopic mast eye.
5: Then over the top of mast arms.

DSNWHLA2

Pt# DSNWHLA2

(4) RETRIEVE NETTING

1: Feed over the top of mast arms.
2: Through telescopic mast eye.
3: Bottom mast eye.
4: Then through this eye.

DSNWHLR4

Pt# DSNWHLR4

(5) RETRIEVE NETTING

5: Feed through this sensing eye.

DSNWHLR5

Pt# DSNWHLR5

(6) RETRIEVE NETTING

6: Feed through this bottom eye.

DSNWHLR6

Pt# DSNWHLR6

7 RETRIEVE NETTING

7: Feed through this wand eye.
8: Wrap around spindle.

DSNWHLR7

Pt# DSNWHLR7

(8) RETRIEVE NETTING

8: spindle motor rotate this way.

DSNWHLR8

Pt# DSNWHLR8

(9) RETRIEVE NETTING

9: Lock spindle motor in over bolt, to unlock lift over.

DSNWHLR9

Pt# DSNWHLR9

(10) RETRIEVE NETTING

10: Auto sensor is unlocked by raising this handle and pushing the latch lever.
To lock off, raise this handle and pull the latch lever.

DSNWHLR10

Pt# DSNWHLR10

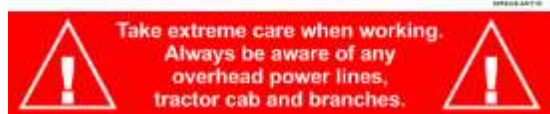
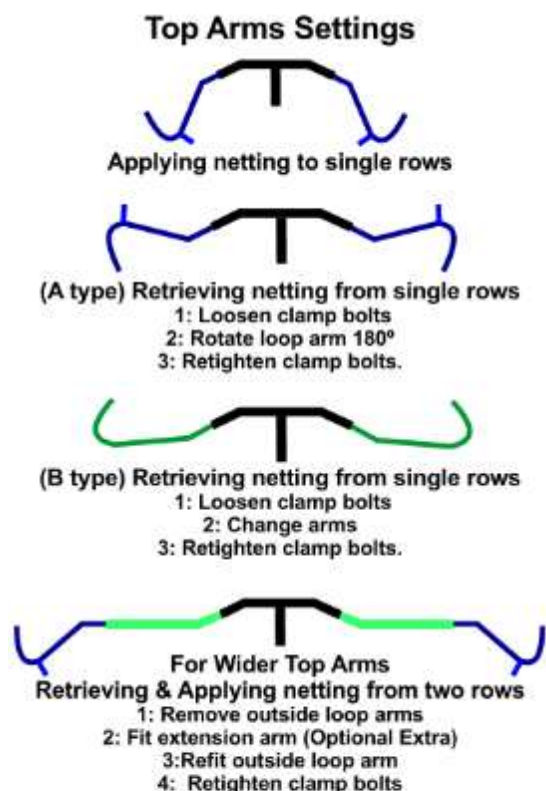
(11) RETRIEVE NETTING

11: Auto Sensor Adjustment.
For tension adj
Screw ajustemt - nut.



Pt#DSNWHLR11

NetWizz - Stickers High Lift Swivel Head



Pt# DSNWSWHTAS

TO ROTATE MAST

- 1: Pull the mast pin rope,
- 2: Then rotate the mast using this handle and allow pin to re-lock.
Every slot is 15°
- 3: This handle is then raised to reposition for more mast rotation.

This locating pin assembly has a shear bolt - 10x25

Caution ensure the mast rotating pin on this rope is locked in before repositioning the handle.

Pt# DSNWRM

NetWizz - Stickers High Lift Swivel Head

High Lift Mast Swivel Head

EXTEND MAST LENGTH

- 1: Lower end of mast to 1.5m from ground.
- 2: Undo 2 x telescopic clamp bolts.
- 3: Remove both telescopic mast pin and carefully extend to the fullest length.
- 4: Re-pin & re-clamp.

RETRACT MAST LENGTH

- 1: Lower end of mast to 0.5m from ground
- 2: Undo telescopic clamp bolts.
- 3: Remove both telescopic mast pin and carefully retract (using 2 people) to the shortest length,
- 4: Re-pin & re-clamp.

OPEN TOP ARMS

- 1: Lower end of mast to 1m from ground.
- 2: Leave pin in the long centre netting eye.
- 3: Remove one arm pin and rotate down.
- 4: Remove other arm pin and rotate down.
- 5: Now pin all three plates together in the bottom hole.
- 6: Rotate arm assembly to the required setting & pin both sides.

This arm assembly can be set at 0°, 30° or 45° so the arms are square to the row.

Then raise the mast and rotate the required side, each mast main pole slot setting is 15°

Pt#DSNWHLSHEML

NetWizz - Stickers High Lift Swivel Head

High Lift Mast & Swivel Head

EXTEND BOTTOM MAST EYE

- 1: Extend bottom mast eye on telescopic slide with one clamp bolt.

ADJUST ARMS LENGTH

- 1: Lower end of mast to 1m from ground.
- 2: Loosen 2 x tube clamp bolts on end base arms.
- 3: Slide end arms to right length and retighten tube clamp bolts.
- 4: Extension arms can be fitted the each side is required.

Then raise the mast and rotate the required height, each mast main pole slot setting is 15°

**CAUTION NEVER
CLIMB THE MAST TO
THREAD NETTING, USE
THREADING ROPE**

**CAUTION TAKE
EXTREME CARE WHEN
WORKING ON SLOPING
TERRAIN.**

**ALWAYS BE AWARE OF
ANY OVERHEAD
POWER LINES,
TRACTOR CAB AND
BRANCHES.**

Pt# DSNWHLWEBME

SADIE - Single sided front mount Vineyard & Orchard



Rubber flap 390mm long for older Sadie's each – **ZSRF390*** \$23.00 + GST



Rubber flap 540mm long for new Sadies each – **ZSRF540*** \$26.00 + GST



Bristle 5mm x 5mm quad section black set (8) (up to 2020) – SADIE – **ZSBS ***



Bristle 5mm x 5mm quad section black round set (6) – SADIE (from 2021 on) – **ZSBR ***



Chock, SADIE Bristle (up to 2020) – **ZSBC**



Rubber flap KIT for old Nylon SADIE 8+hl – **ZSRFK**



Holders for Rubber Flaps single Sadie (8) – **ZSKRF**

SADIE - Single sided front mount Vineyard & Orchard



Bush, Nylon - 4 per SADIE (for all 1" pin up to 2021) – **NB1CH**



Sadie single Sided Front Mount bronze bush, ID Ø30 x 34 OD x 40 long, 2 in each pivot & Hyd ram total required 6; (from 2021 on) – **ZSBB30X34X40EK** \$7.90 + GST



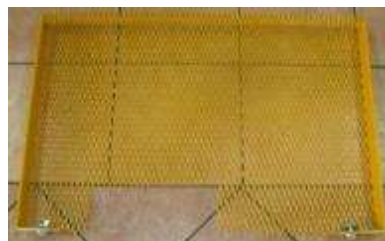
Wedge all Sadie's – **ZSOW***



Front skirt complete Orchard & Vineyard Sadie – **ZSOFs***



Rear skirt complete Orchard & Vineyard Sadie – **ZSORS***



Rear mesh guard Orchard & Vineyard Sadie – **ZSOMG***

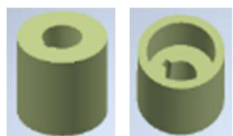
SADIE - Single sided front mount Vineyard & Orchard



Pin & cleat Ø30 x 175mm grip length (Single sided Sadie arms & ram) with recessed grease nipple, centre grease groove (from 2021 on) – **SPCK30X175*** \$..... + GST



Pin, pivot Orchard & vineyard single sides Sadie 1" shaft (up to 2020) – **ZSOPP***



Boss, Ø31.75, 1:8 tapered shaft, 8mm keyway, Sadie drum (from to 2021) – **ZVSB311:8WK**

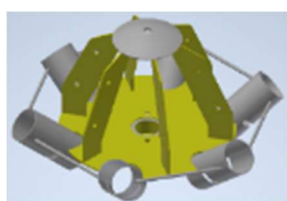


1" UNF castle narrow nut for tapers shaft on Sadir Hyd motors (from to 2021)



Boss, 1"Ø, ¼key, 2x3/8 grub V/Sadie drum (up to 2020) - **ZVSDB***

SADIE - Single sided front mount Vineyard



Single sided Vineyard Sadie spinning head frame only, tapered boss for tapered shaft Hyd motor (steel frame no components) (from 2021) – **ZSSSVSHFOEK**

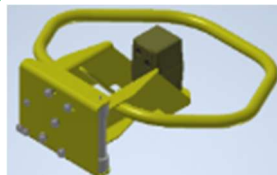
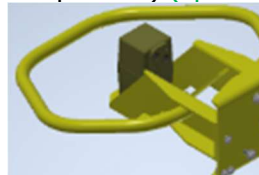


Camp to hold on round nylon bristles (from 2021) – **BCB3508**

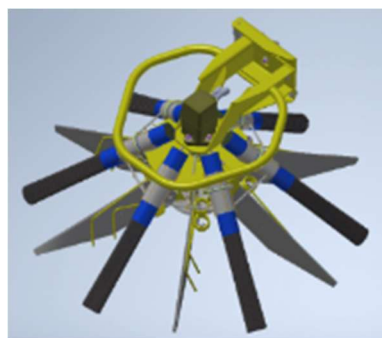
SADIE - Single sided front mount Vineyard



Vineyard Sadie spinning head frame only (steel frame no components) (up to 2020) – **ZVSSHFO**



Vineyard Sadie head with (BM5 125cc hyd motor tapered shaft, 4 bolt square flange), bolts (from to 2021) – **ZVSSHWMBER** \$1304.97 + GST



Vineyard Sadie head assembly – flaps, bristles, steel tines, hydraulic motor, spinning head, frame back to the shear-bolt bracket, No hoses (after 2021) - **ZVSNH-21***



Vineyard Sadie head (steel frame no components) (up to 2020) – **ZVSNHO***



Vineyard Sadie head assembly – flaps, bristles, motor spinning head, frame back to the shear-bolt bracket, No hoses (up to 2020) - **ZVSNH***

SADIE - Single sided front mount Orchard



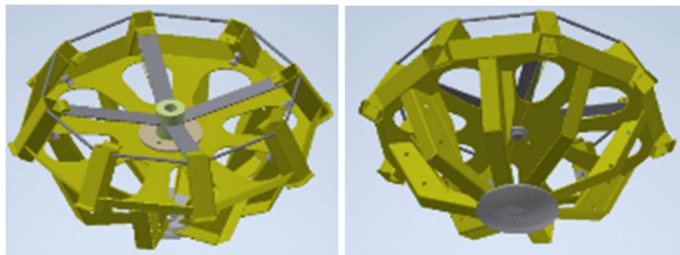
Head lift arm Orchard & vineyard single sides Sadie (up to 2020) – **ZVSSMA***



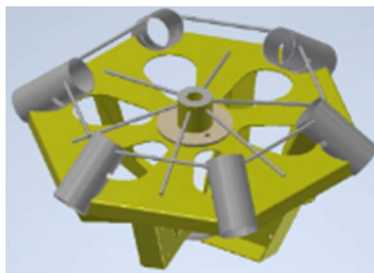
Skid plate - Orchard Sadie – **ZVSBPEK \$55.13 + GST**



Boss, 1¼Ø, 5/16k, 2x3/8 grub Orchard Sadie drum (up to 2020) – **ZSODB***



Orchard Sadie spinning head frame only, Ø1¼" parallel bore, (steel frame no components) (up to 2020) – **ZSOSH \$1432.81 + GST**

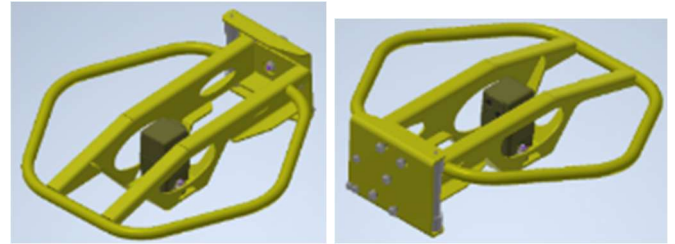


Orchard Sadie spinning head frame only with big tapered bore (steel frame no components) (from 2021) – **ZSOSSHFEK**

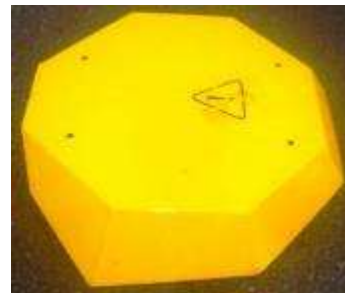


Orchard Sadie head (steel frame no components) (up to 2020) – **ZSOHF***

SADIE - Single sided front mount Orchard



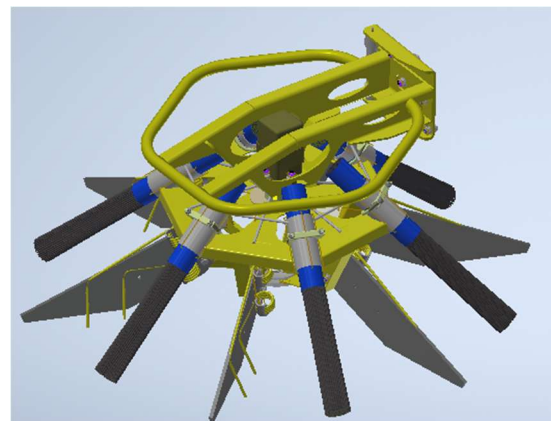
Orchard Sadie head with (BM5 125cc hyd motor tapered shaft, 4 bolt square flange), bolts (from to 2021) – **ZSOSHWMBEK**



Orchard Sadie top head shield (up to 2020) - **ZSOTHs**

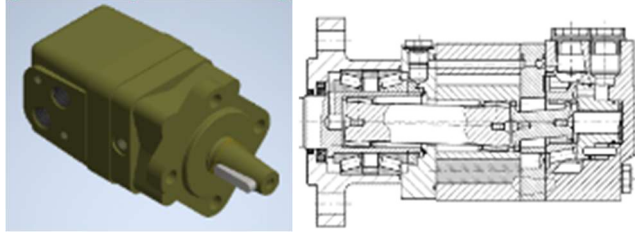


Orchard Sadie head assy: flaps, bristles, motor, spinning head, frame back to the shear-bolt bracket. No hoses (up to 2020) – **ZSONH***

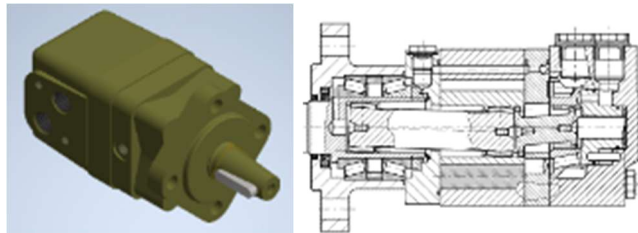


Orchard Sadie head assembly: flaps, 6 x round bristles, 6 x long rubber flaps, 6 x right hand spring tines & keeper plates, BMSY hydraulic motor, 2 big tapered bearings with big tapered shaft, spinning head with big tapered bore, frame back to the shear-bolt bracket. No hoses (from 2021) – **ZSONH-21***

Sadie Vineyard Hydraulic motors, BM5 (BMSY) Like Hyd

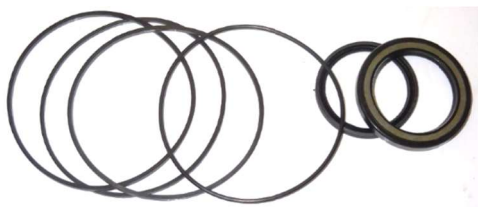


Sadie Double Sided Front Mount; Like Hyd motors BM5 (BMSY) 125cc with big Ø31.75, 1:8 taped shaft, 8mm keyway, 4 bolt flange, 7/8UNO ports (from 2022 on) *This is what we use now has - 3,500 psi shaft seals, & big tapped bearings* – **MHCBM51254BTS** \$609.34 + GST



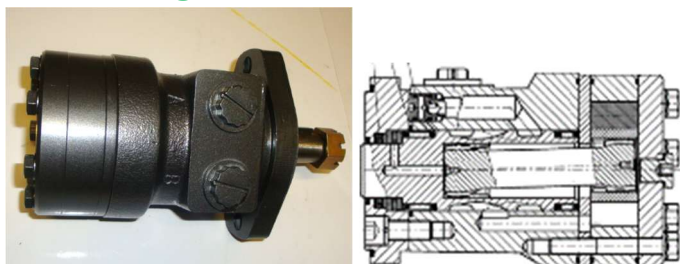
Sadie Double Sided Front Mount; Hyd motors BM5 (BMSY) 100cc with Ø31.75, 1:8 taped shaft, 8mm keyway, 4 bolt flange, 7/8UNO ports (from 2022 on) *This is what we use now has - 3,500 psi shaft seals, & big tapped bearings* – **MHCBMSY1004BTS** \$584.04 + GST

Sadie single Sided orchard Front Mount; Hyd motors BM5 (BMSY) 125cc with Ø31.75, 1:8 taped shaft, 8mm keyway, 4 bolt flange, 7/8UNO ports (from 2022 on) *This is what we use now has - 3,500 psi shaft seals, & big tapped bearings* – **MHCBMSY1254BTS** \$614.78 + GST

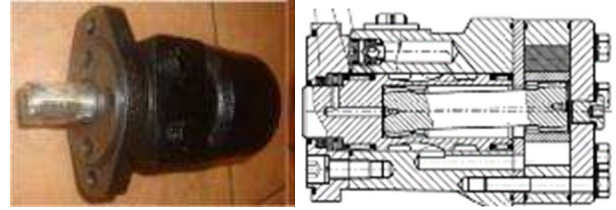


Seal kit for BMSY hydraulic motor (SHIJIAZHUANG HANJIU TECHNOLOGY). high pressure shaft seal size 48x48x4.7, dust seal, 1 x O-ring & 3 x square rings– **MHCBMSYSK250SHH**

Sadie Vineyard - Hydraulic motors TPF BMRS



Hyd motor for all vineyard Sadie's, TPF 100cc BMRS100 2blt flange Ø31.75, 1:8 taped shaft, 8mm keyway, 7/8UNF ports (double sided & single sided Sadie's from 2020) – **MHCBMRS1002BT2** \$435.10 + GST



Hyd motor for all vineyard Sadie's, TPF 100cc BMRS100 2blt flange 1" shaft 7/8UNF ports (double and Single sided Sadies after 2005 up to 2019) (up to 2020) – **MHCBMRS1002B1S** \$464.50 + GST

Hydraulic Motors – TPF BMRS Parts



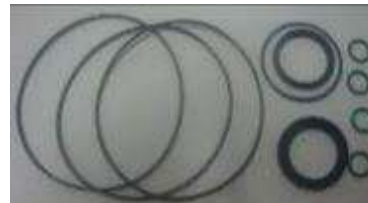
Shaft seal HP BMRS hydraulic motor 28.56 × 39 × 5.5 – **MHCBMRSHPS**



Dust seal HP for BMRS hydraulic motor – **MHCBMRSDS**



Shaft bearing kit for BMRS hydraulic motor - **MHCBMRSSB**

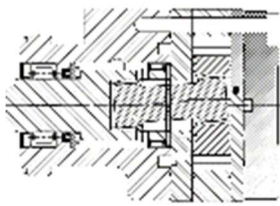


Seal kit for BMRS-N hydraulic motor - **MHCBMRSSK**

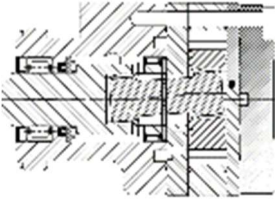


Seal for Shuttle Check valve on BMRS-N hydraulic motors grade 90 (4 required per motor) – **ORM10X2**

Sadie Orchard Hydraulic motors TPF BMER-2



Hyd motor for all orchard single sided Sadies 125cc
BMER125 7.4cc, 1 1/4" tapered shaft orchard single sided
Sadie's (from 2020 - 2021) – **MHCBMER21256B11**



Hyd mtr for all orchard single sided Sadies 125cc
BMER125 7.4cc, 1 1/4" straight shaft (WHITE replacement)
(up to 2020) - **MHCBMER125**

Old Orchard Sadies pre 2013



White RE series



Seal Kit WHITE RE (Short) – **MWRESKS**
Seal Kit WHITE RE (Full) – **MWRESKF**

Hydraulic Motors seal kit – TPF BMER-2



Seal kit for BMER-2 hydraulic motor, rated to 200 bar –
MHCBMER2-SK



Shaft seal HP BMER-2 hydraulic motor rated to 200 bar, 35
id x 48 od x 4.72 wide – **MHCBMER2SS200**



Shaft seal HP BMER-2 hydraulic motor special made rated to
300 bar, 35 id x 48 od x 4.72 wide – **MHCBMER2SS300**



Shaft Wiper seal HP BMER-2 hydraulic motor, 57.15 id x 35
od x 6.1 wide – **MHCBMER2DS**

SADIE - Double sided Vineyard



Rubber flap 390mm long for pre 2002 older Sadies – **ZSRF390** \$27.56 + GST



Rubber flap 460mm long for 2020 & 2021 double sided front mount Sadie's – **ZSRF460** \$29.56 + GST



Rubber flap 540mm long after 2002 Sadie's – **ZSRF540** \$31.85 + GST



Bolt for double rubber flaps only to Sadie spinning head, 24 needed Ø10x50 bolts grade 8 – **BHZM10X50HT** \$0.81 + GST



Bolt for double rubber flaps and spring line to Sadie spinning head, 24 needed Ø10x60 bolts, grade 8 - **BHZM10X60HT** \$2.00 + GST



48 off Ø10 large Gall flat washers, 48 needed, Ø10 – **BWGF03/8** \$0.36 + GST



Nylor flanged nut for double sided Sadie, 24 needed Ø10 - **BNSFM10** \$0.28 + GST



Std gas strut 500N-375 Sadie – **GST500N375**



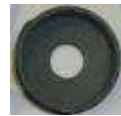
Stainless Steel gas strut 600N-375 Sadie with 4 x gall flat washers & 2 x Flanged nylor nuts – **GST600N375SS** \$79.14 + GST

SADIE - Double sided Vineyard



Wheel 4.10-3.50-4" air free wheel, 73mm wide tread, welded rim hot dip galvanising, with 6203-2RS bearings & spacer, no bolt axle V'yd Sadie - **ZVS4WS*** \$..... + GST

Wheel 4.10-3.50-4" air free wheel, 73mm wide tread, welded rim hot dip galvanising, with 6004 bearings & spacer, with bolt axle V'yd Sadie - **ZVS4WSA*** \$83.14 + GST



Dust cover wheel seal protector for 4" wheels (on left) – **ZVSDCSW***

50mm Ø Washer for seal protector for 4" wheels (centre) 16mm Washer for bearing for 4" wheels (right)



Axle bolt kit for 4" wheels –

SADIE - Double sided Vineyard multi mount



Trailing wheel leg Double Front-mount Sadie made from 40x40x4 galvanised RHS – **ZVSDFMTL***



Small wheel arm Double Front-mount Sadie made from 40x40x4 galvanised RHS – **ZVSDFMFWA***



Small wheel arm Double Multi-mount Sadie, made from 40x40x4 galvanised RHS – **ZVSDMMSWA*** \$93.80 + GST

SADIE - Double sided Vineyard multi mount



Front tyre 5.00-8" 8 ply tyre for Sadie pre2013–
ZVS8T58PR



Front rim 3.75" x 8" rim for Sadie pre2013– **ZVS8R3.HT**

Hubs & Axles 1 t pre 2013



Stub Axle 8"x39mm rnd nut/wsh/pin - **AHAS8X39RND**
Stub Axle 12"x40mm SQUARE nut/wsh/pin -



Whl brg set std Holden Lge & sml cup/cone, oil seal –
BTWSH



Dust Cap std HT 1 3/4" – **AHDCHT**



Wheel Nut 7/16" 60° (HT HOLDEN) - **AHWNHT7/16**
Wheel Stud 0.437x1.5 (HT HOLDEN) -**AHWS.437X1.5**



Front wheel 16-650-8" 30mm centre air free PU filled - Sadie
2013 and after – **TRW16*650-PUCH**
Front wheel seal protector 30mm centre wheel 2013 and
after – **BWZFM27X60X30X4**

SADIE Tines – for Double and single sided Sadies



Vineyard Sadie single sided with tine & holder right hand
side in picture



Sadie with tine & holder right hand side in picture
Bolts requires - 60x10 if using with 2 rubber flaps,
50x10 if using with 1 rubber flap



Sadie tine Ø8mm spring 380 long, right and left hand.
Right hand as above - **ZVSSTR \$22.84 + GST**
Left hand – **ZVSSTL \$22.84 + GST**



Sadie tine clamp must be used to hold tine on pictured on
left, requires Right hand as above – **ZVSTCBR \$27.58 + GST**
Left hand – **ZVSTCBL \$27.58 + GST**

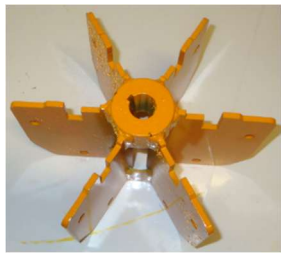


Spinning head - pre 2002 Double Multi mount Sadie, Ø1"
parallel shaft, 1/4" keyway -**ZVSDSSHO***

SADIE - Double sided Vineyard multi mount



Spinning head 2002 -2020 Double Multi & front mount Sadie, Ø1" parallel shaft, 1/4" keyway - **ZVSDSSH02002***



Spinning head 2020 & onward Double front mount Sadie with Ø31.75, 1:8 taped shaft, 8mm keyway, - **ZVSDSSH02020T \$303.00 + GST**



Pin set for Double Multi-mount Sadie (up to 2020) - **ZVSDMMPS***



Double Multi-mount Sadie double 1" pin with bolt & grease nipples (up to 2020) - **ZVSDARMPIN**



Bush, Nylon - 40 required per SADIE (up to 2020) -**NB1CH**



Sadie single Sided Front Mount bronze bush, ID Ø30 x 34 OD x 32 long, 2 in each pivot & Hyd ram total required 6 ; (from 2021 on) - **ZSBB30X34X32EK**



Boss, 1"Ø, 1/4key, 2x3/8 grub V/Sadie drum - **ZVSDB***

SADIE - Double sided Vineyard multi mount



Head height arms & pins Double Multi mount Sadie after (up to 2020) **ZVSDPHAA**



Double multi-mount, pin between high arms and head 1" pin with angle bracket grease nipple (up to 2020) - **ZVSDPBHAAH \$48.00 + GST**



Head height arms with brackets & pins complete Double Multi mount Sadie after (up to 2020) **ZVSDHHASC***



Rock shield side guard complete Double Multi mount Sadie - **ZVSDMMRSSG***



Centre curtain Rock shield Double Multi mount Sadie - **ZVSDMMRSCC***



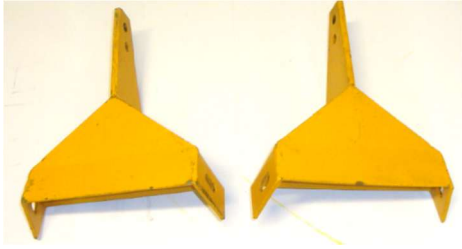
Head wheel assay bracket Double Multi mount Sadie after 2004, each - **ZVSDMHWAB-04***



SADIE - Double sided Vineyard multi mount



Head wheel assay bracket Double Multi mount old Sadie year 2002 – 2004, each – **ZVSDMHWABB04**



Head wheel assay bracket Double Multi mount old Sadie year 2000 – 2002, each – **ZVSDMHWABB00**



Upgrade kit - for pre-2001 model Double Multi mount Sadie, rear wheel brackets 1 each left & right hand, 24 long rubber flaps, 2 x spinning head Ø1" bore, all bolts required to hold rubber flaps & wheels as required as in picture above -

ZVSDRF2001* \$1708.69 + GST

You need this kit to fit tynes to old pre-2001 Sadie's.

Head motor bracket Double Multi mount Sadie die – **ZVSDHMB***

Trailing wheel leg Double Multi mount Sadie – **ZVSDMMTWL***

SADIE - Double sided Vineyard multi mount



Double Sadie Multi Mount Air free wheels to swing back assay complete – Double MM (up to 2020) **ZVSDMMW-S***



Double Sadie Moulty Mount; Air free wheels, Head frame, long rubber flaps, Hyd motor, (up to 2020) **ZVSDM.....***

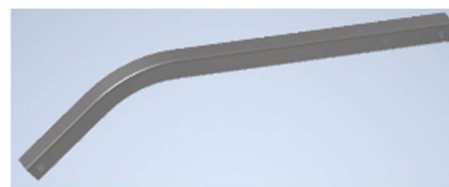
SADIE - Double sided Vineyard Front Mount



Outside width arms double front mount Sadie with 2 Ø20mm pins- (up to 2019) f- **ZBSDFMWPA**



Small wheel arm (state L/H or R/H) Double front-mount Sadie, now made from 4mm thick square tube – **ZVSDFMFWA* \$93.80 + GST**



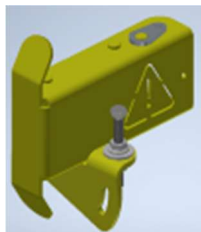
Front small wheel arm (state L/H or R/H) Double Front-mount Sadie, now made from 4mm thick square tube, no bolts supplied – **ZVSDFMFFWA* \$100.88 + GST**

SADIE - Double sided Vineyard Front Mount



Rear small wheel arm Double Front-mount Sadie, now made from 4mm thick square tube – **ZVSDFMLT***

\$107.16 + GST



Outside width arms double front mount Sadie with 3 Ø20mm pins & wheel height adjustment bolt- (up to 2019) – **ZVSDFMFCB***

\$737.00 + GST



Head spring assembly Double front mount Sadie - **ZVSDFMHSA***

\$80.38 + GST



Head spring Double front mount Sadie - 1.5"ODx0.2830 wire x 400mm long - **SBC1.50D0.283X4**

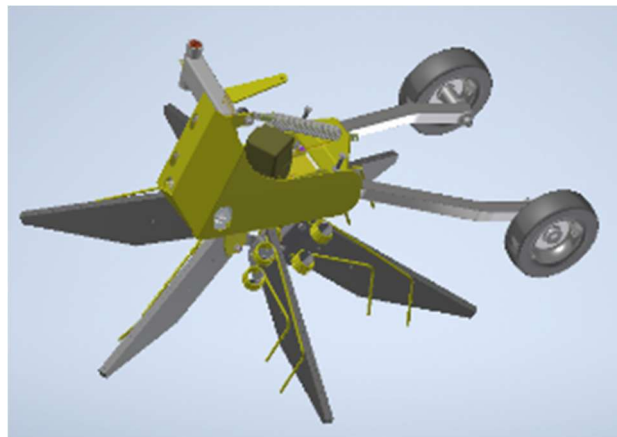


Ball Joint 1/2" UNF (Male x Female) studded – **BHBj12UNFCH**



Ball Joint 12mm (female x female) – **BHBjM12F**

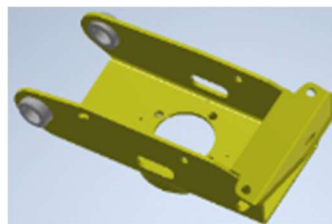
SADIE - Double sided Vineyard Front Mount



Sadie Double Sided Front Mount floating head complete with 4 bolt motor tapered shaft, 12 rubber flaps, solid rear wheels, swing back arm, hold down spring, 6 spring tines, everything as in picture, state right hand or left hand required (from 2022 on) –

left hand **ZVSDFMFHCOMPLH** \$2,186.00 + GST

right hand **ZVSDFMFHCOMPRH** \$2,186.00 + GST



Sadie Double Sided Front Mount head frame to take 4 bolt motor flange, state right hand or left hand required (from 2022 on) –

left hand **ZVSDFMHBFBPLH** \$275.80 + GST

right hand **ZVSDFMHBFBPRH** \$275.80 + GST



Sadie Double Sided Front Mount; side swing back arm & top pin 1 x Ø20 pin, state right hand or left hand required (pre 2021) - – **ZVSDSFMSBA***

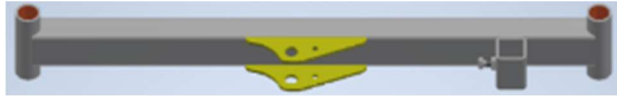


Sadie Double Sided Front Mount; side swing back arm & bottom universal joint with 1 x Ø30 pin, state right hand or left hand required (from 2022 on) - – **ZVSDSFMSBABUJEK**

SADIE - Double sided Vineyard Front Mount



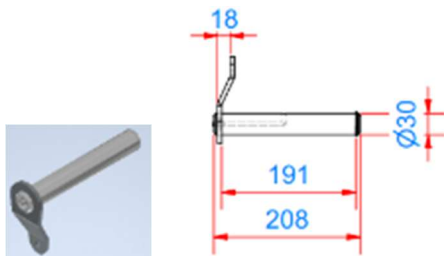
Sadie Double Sided Front Mount; width parallel outside arm, (from 2022 on) – **ZVSDSFMWPOAEK**



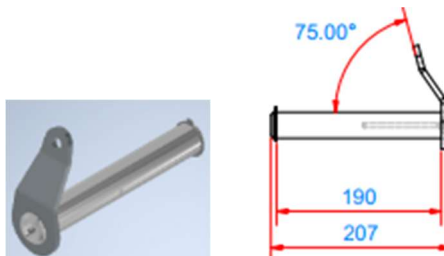
Sadie Double Sided Front Mount; width parallel inside arm, (from 2022 on) – **ZVSDSFMWPIAEK**



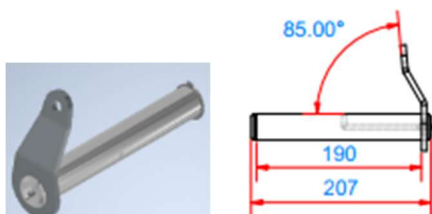
Sadie single Sided Front Mount bronze bush, ID Ø30 x 34 OD x 40 long, 2 in each pivot & Hyd ram total required 6; (from 2021 on) – **ZSBB30X34X40EK**



Sadie Double Sided Front Mount arms pin; Ø30 pin x 191 grip length, total 10 required (from 2022 on) **ZVSDSFMAP30X189EK** \$52.02 + GST

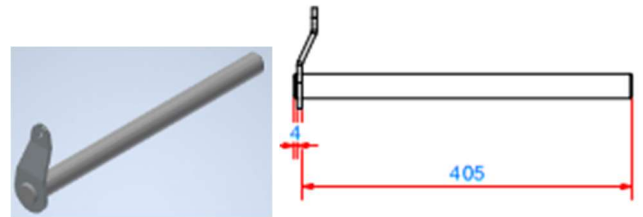


Sadie Double Sided Front Mount head universal joint pin; Ø30 pin x 190 grip length, cleat at 75°, total 2 required for head universal joint. (from 2022 on) **ZVSDSFMHU190x75** \$52.02 + GST

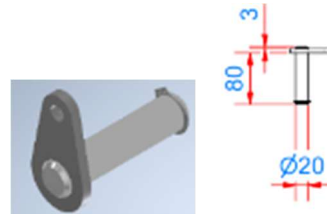


Sadie Double Sided Front Mount head universal joint pin; Ø30 pin x 190 grip length, total 2 required for head universal joint. (from 2022 on) **ZVSDSFMHU190x85** \$52.02 + GST

SADIE - Double sided Vineyard Front Mount

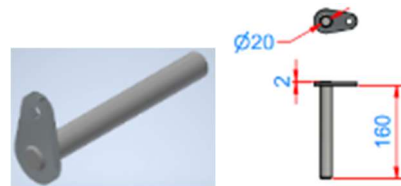


Sadie double sided Front mount complete side assembly pin; Ø30 pin x 405 grip length, total 2 required (from 2022 on) – **ZVSDSFMCSA30X40** \$..... + GST

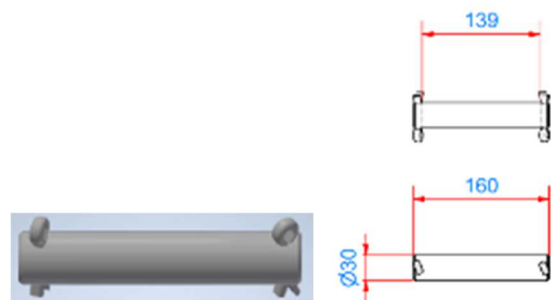


Sadie Double Sided Front Mount width ram pin, Ø20 pin x 74 grip length, total 2 required (from 2022 on) – **ZVSDSFMWR20X74EK** \$..... + GST

SADIE - Double sided Vineyard Front Mount



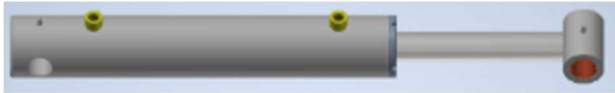
Sadie Double Sided Front Mount; width ram pin, Ø20 pin x 158 grip length, total 2 required (from 2022 on) – **ZVSDSFMWR20X158EK** \$39.88 + GST



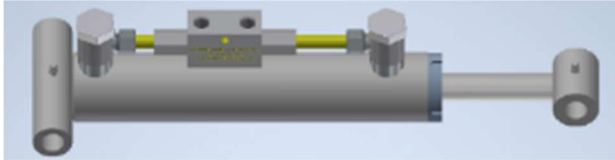
Sadie Double Sided Front Mount; arms lift ram top pin Ø30 x 130 grip length, (from 2019 on) – **ZVSDSFMALR30X130EK**

Sadie Double Sided Front Mount; arms lift ram pin bottom Ø30 x 140 grip length, (from 2019 on) – **ZVSDSFMALR30X140EK**

SADIE - Double sided Vineyard Front Mount



Sadie Double Sided Front Mount; arms lift ram 220x63x32 Ø30 pin, (from 2019 on) – **ZVSDSFMALR220X63X32EK**



Sadie Double Sided Front Mount; Hyd with arms ram, 200x 50x25 x with double piolet check valves – (from 2019 on) **RCHM50/25-200DP**



Sadie Double Sided Front Mount; Like Hyd motors BM5 100cc with tapered shaft, 4 bolt flange, 7/8UNO ports (from 2022 on) – **MHCBM51004BTS**



Sadie Double Sided Front Mount; Hyd flow splitter / combiner, 50/50 split, 10-25 lpm, 1/4" BSP ports, steel body (from 2019 on) – **VHFD50/5010COM** \$137.58 + GST



Sadie Double Sided Front Mount; Cartridge for Hyd flow splitter / combiner, 50/50 split, 10-25 lpm, (from 2019 on) – **VHFD50/5010FFS** 82.55 + GST

SADIE - Double sided Vineyard Front Mount



Sadie Double Sided Front Mount; Elect selector valve 6 port, 9/16 UNO ports, Deutsch solenoid IP67, manual override, (from 2019 on) – **VS6PE916DNO**



Sadie Double Sided Front Mount; Coil for above 12VDC Deutsch, IP67, for 3 speed valve for above, (from 2019 on) — **VCS3SE3CHDP** \$54.55 + GST

Sadie all – Hydraulics

*"TPF" This is what we use now has - 3,000 psi shaft seals,
Low speed & four bearings*



Hyd mtr for single & double sided Sadies TPF 100cc
BMRS100 2blt flange 1" shaft 7/8UNF ports (double sided
Sadies after 2005) – **MHCBMRS10052B1S**

Hyd mtr TPF 80cc BMRS80 2blt flange 1" shaft 7/8UNF ports
(before 2005) – **MHCBMRS802B1S**

Hyd motor for single & double sided Sadies TPF 100cc
BMRS100 2blt flange, Taper Shaft T2 shaft, 7/8UNF ports
(double sided Sadie's after 2020) – **MHCBMRS10052BT2**

Hyd Motor TPF Parts



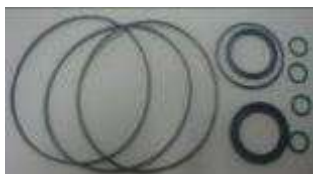
Shaft seal HP BMRS hyd mtr 28.56x42x5.5 –
MHCBMRSPSS



Dust seal HP for BMRS hyd mtrs – **MHCBMRSDS**



Shaft bearing kit for BMRS hyd mtrs - **MHCBMRSSB**



Seal kit for BMRS-N hydraulic mtrs - **MHCBMRSSK**



Woodruffe Key 1x 1/4" – **KW1/4X1**

Sadie all – Hydraulics

*For older models
Hyd Motor White RS Parts*



Seal Kit WHITE RS (Short) picture left – **MWRSSKS**
Seal Kit WHITE RS (Full) picture right – **MWRSSKF**



Thrust Bearing WHITE HS/RS – **MWRSTB**



Key steel 1x 1/4" – **KS1/4X1"**

Hyd Motor Danfoss Parts



Seal kit Danfoss OMP 151-1279 – **MHDOMP80SK**



Seal kit Danfoss OMR 151-1280 – **MHDOMRSK**



Dust seal for OMP/OMR 151-131300 – **MHDOMPDS**



Shaft seal HP for OMP/OMR 633B036100 – **MHDOMPSS**

Hyd Motor Senwei Parts



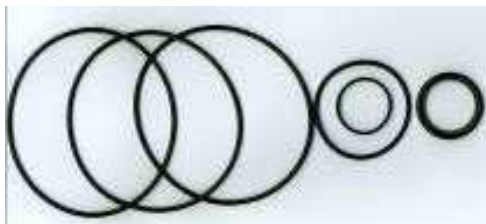
Thrust bearing & washer OMRS- **MHCOMRSTBW**



Needle roller bearing OMRS – **MHCOMRSNRB**



Bearing for shaft OMRS – **MHCOMRSSB**



Seal kit for Senwei OMRS hyd mtrs – **MHCOMRSSK**

Hyd Motor M&S Parts



Seal kit MLHR motors 1 1/4" shaft – **MHMLHRSK**

Seal kit HP motors – **MHHPSK**

Seal kit HR motors – **MHHRSK**



Woodruffe Key 1x 1/4" – **KW1/4X1**

Hydraulic Rams – Dantal



Sadie Double sided multi mount ram "Dantal" 305 x 66, push rod 36, – **RM63X36X305**



Seal kit for ram "Dantal" 63x36 – **RM63X36**

Hydraulic Rams – Sandong

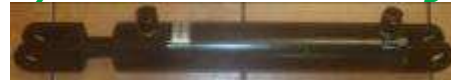


Sadie single sided ram Metric "Sandong" 205 x 63, push rod 32, – **RCHM8X63X32**



Seal kit ram Metric "Sandong" piston 63, push rod 32, – **RCHMSK63X32**

Hydraulic Rams – Tiantong



Seal kit for 8x2.5, 12x2.5x1.25" – **RCHSK2.5X1.25**

Hydraulic Rams - Baker parts pre-2008



Seal Kit 2.5"BX1.25" BAKER - **RBSK2.5X1.25**

SADIE Stickers



sticker SADIE logo – **DSSALOG**



sticker SADIE Orchard Sgle front mount – **DSSOSFM**



sticker SADIE Vyrd Single Front mount – **DSSVSFM**



sticker SADIE Vyrd Double Front Mount – **DSSVDFM**

SADIE Stickers



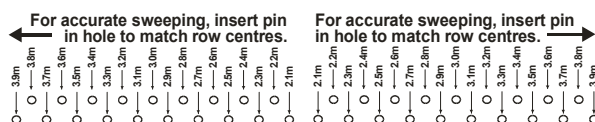
sticker SADIE Vyrd Double Multi-mount – **DSSVDM**



sticker Keep clear of all moving parts – **DSDANGER**



sticker SAFETY Read Owner's Manual – **DSSAFETYMAN**



sticker SADIE ...to match row centres R – **DSSAROWWID**

sticker SADIE ...to match row centres L – **DSSAROWWIDL**

Extend & contract SADIE arms when fully raised
Max. Hyd. Requirements - 35 lt/min
Set flow control to approx # 8
Tyre pressure 30 P.S.I.

KEEP CLEAR OF ALL MOVING PARTS

sticker SADIE extend & contract arms ... – **DSSAEXTARMS**



sticker SADIE when mounted to tractor... - **DSSAMOU3PL**



sticker SADIE ...max hyd require