



Crendon Nominees Pty Ltd A/T/F
the Fry Family Trust T/A: Crendon Machinery
ACN 009 135 335 ABN 53 913 250 628

2 Ramsay Tce
PO Box 95
DONNYBROOK WA 6239

Ph: (08) 9731 1502
Toll Free: 1300 761 922
Fax: (08) 9731 1657
Email: info@crendon.com.au
www.crendon.com.au

Manufacturers and Designers of Horticultural and Viticultural Equipment

* **SQUIRREL** self propelled elevating platforms * **SADIE** vineyard & orchard sweepers * **NETWIZZ** netting retriever



BinRunner, Bin Trailers, Olinet, Weed Boom, Wire Winder, TrelPick, Rock Digger, Parts Catalogue

Page #

BinRunner – Four, five & six bin ... 2

Bin Trailers – Two, three & four bin. 9

Weed Boom – .9m, 1.2m & 1.5m ... 11

OliNet – 4m, 5.5m & 7m..... 13

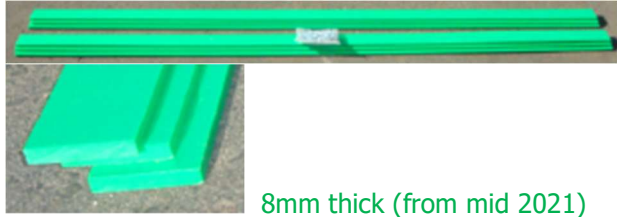
TrelPick –..... 14

Power Wire Winder –..... 20

Rock Digger –..... 21

Rammer –..... 24

Bin Runner – Floor wear strips



8mm thick (from mid 2021)

4 bin Runner Floor HDPE wear strips 50mm x 8mm x 9.6m for & 100 x counter sunk screws, (from mid-2021)

– **ZBRWS8X50X9.6*** \$203.36 + GST

5 bin Runner Floor HDPE wear strips 50mm x 8mm x 12m for & 120 x counter sunk screws, (from mid-2021)

– **ZBRWS8X50X12** \$26.59 + GST

6 bin Runner Floor HDPE wear strips 50mm x 8mm x 14.4m for & 150 x counter sunk screws, (from mid-2021)

– **ZBRWS8X50X14.4** \$247.03 + GST



6mm thick (before mid 2021)

4 bin Runner Floor HDPE wear strips 50mm x 6mm x 9.6m for & 100 x counter sunk screws, (before mid-2021)

– **ZBRWS4*** \$171.47 + GST

5 bin Runner Floor HDPE wear strips 50mm x 6mm x 12m for & 120 x counter sunk screws, (before mid-2021)

– **ZBRWS5*** \$188.30 + GST

6 bin Runner Floor HDPE wear strips 50mm x 6mm x 14.4m for & 150 x counter sunk screws, (before mid-2021)

– **ZBRWS6*** \$208.71 + GST

Bin Runner – Sprockets



Sprocket 10 tooth x $\frac{3}{4}$ AS Ø1" B $\frac{1}{4}$ " Key 2x5/16 grubs - **SM10TX3/4AS1BCH** * (up to 2017)



Sprocket 11 tooth x duplex $\frac{3}{4}$ AS Ø1" B $\frac{1}{4}$ " Key 2 x 10mm grubs - **SM11TX3/4ASD** (2019 to 2020)

Bin Runner – Sprockets



Sprocket 12 tooth x duplex $\frac{3}{4}$ AS Ø1 $\frac{1}{4}$ " B $\frac{1}{4}$ " Key 2 x 10mm grubs (From 2020 on) - **SM12TX3/4AS1.25** \$78.25 + GST de



Sprocket T/fit duplex 21Tx $\frac{3}{4}$ AS 2517 – **STFD21TX3/4-251**



Sprocket T/Fit simplex 21Tx $\frac{3}{4}$ AS 2517 – **STFS21X34BS-251** (up to 2017)



Bush, Taper fit 2517, Ø1 $\frac{3}{4}$ " – **STFB2517-13/4CH** * (up to 2018)



Bush, Taper fit 2517, Ø45mm – **PTLB2517-45CH** (from 2019)

Bin Runner – Drive Axles



Bin Runner keyed Ø1-3/4" shaft – **ZBRKS*** (*up to 2018*)



Bin Runner keyed Ø45mm shaft (*From 2019*)
– **ZBRKSM*** \$119.21 + GST

Bin Runner – Nickle Plated Chain from 2024



Bin Runner Floor chain & Drive Chain 3/4" AS, all Nickle Plated Duplex (American Standard) very good top-quality (A+) chain. Per foot, **CT3/4DNPCH** \$16.52 + GST df

For all Bin Runner from hydraulic motor to drive shaft floor chain & 1 joiner, 2 ft required, all Nickle Plated, **CT3/4D2CHNP** \$35.37 + GST df

For 4 binrunner floor black chain & 2 joiners, 64 ft required, **Nickle Plated, CT3/4D64CHNP** \$825.65+ GST de

For 5 binrunner floor black chain & 2 joiners, 80 ft required, all Nickle Plated, **CT3/4D80CHNP** \$1,031.17 + GST de

For 6 binrunner floor black chain & 2 joiners, 96 ft required, all Nickle Plated, **CT3/4D96CHNP** \$1,236.69 + GST de



Duplex Chain joiner link 3/4"AS black duplex (60-2) Duplex Chain joiner link 3/4"AS duplex (60-2), all Nickle Plated, – **CTCL3/4DCHNP** \$9.49 + GST df

Bin Runner – Black Chain



Bin Runner Floor chain & Drive Chain 3/4" AS Duplex (American Standard) very good quality black chain. Per foot **CT3/4DCH** \$15.89 + GST df

For all Bin Runner from hydraulic motor to drive shaft floor chain & 1 joiner black chain; 2 ft required **CT3/4D2CH** \$31.78 + GST df

For 4 binrunner floor black chain & 2 joiners; 64 ft required, **CT3/4D64CH** \$709.56 + GST de

For 5 binrunner floor black chain & 2 joiners ; 80 ft required, **CT3/4D80CH** \$885.82 + GST de

For 6 binrunner floor black chain & 2 joiners; 96 ft required, **CT3/4D96CH** \$1062.07 + GST de



Duplex Chain joiner link 3/4"AS black duplex (60-2) – **CTCL3/4DCH** \$8.32 + GST df



Chain Trans 3/4"AS simplex (60-1) from hydraulic motor to drive shaft floor chain (*up to 2017*) – **CT03/4CH**

Bin Runner - Hubs 2t



(From 2010 to 2015)

Hub assembly FORD 2 ton complete (5x1/2UNF-114.3PCD) with bearings, shaft seal, hub cap, -**AHA5X12+2X12** \$61.00 + GST de



Dust Cap for 2T Ø50.5mm – **AHDCCH**

Bin Runner - Hubs & Axles 2.5t



(From 2015 -mid 2021)

Hub/axle assembly, FORD PDC, 2.5 ton complete (5 x 1/2UNF - 114.3PCD 2" SQ x 14" long)-**AHA5X12F2.5** \$136.38 + GST



Wheel bearing set, (2 x big bearing #L68149/10 & seal # Ø43.5 ID X Ø58.87 OD X 8-10 wide) 2.5 ton FORD for hub/stub – **BTWSF2.5*** \$51.14 + GST

Wheel bearing big used 2 & cone, id 34.988 x od 59.131, (id 1.38 x od 2.33) **BTWL68149/10**

Shaft seal **BTWS587X435X8**

Bin Runner - Hubs & Axles 2.5t



Dust Cap for 2.5 ton Ø 59.4mm for large tapered flange 2.25 ton hubs as pictured above – **AHDC60**



Dust Cap for 2.5 ton Ø 63mm for smaller square edge flange 2.25 ton hubs as pictured above – **AHDC63**



Wheel Stud & nut 1/2"-20UNF x 40mm – **AHWS12-20UNF**



Wheel Nut 1/2" (Ford) - **AHWNF1/2**

Bin Runner - Hubs & Axles 2.75t



(From mid 2021 this is what we are using now)

Hub assembly, FORD PDC, 2.75 ton, (5 x 1/2UNF - 114.3PCD) complete with studs, nuts, big & small bearing, dust seal, hub cap - **AHA5XF2.75** \$147.14 + GST



(From mid 2021 this is what we are using now)

Axle, with washer split pin & nuts -**AHA2X12F2.75** \$62.70 + GST df



Wheel bearing set, (1 x big bearing 33008 & 1 x small bearing 33007 & seal 72x48x8) 2.75 ton FORD for hub– **BTWSF2.75** \$51.83 + GST df

Bin Runner - Hubs & Axles 2.75t



Dust Cap for 2.75 ton Ø 61.8mm for large tapered flange
2.75 ton hubs as pictured above – **AHDC61.8** \$8.36 + GST



Wheel Stud & long nut 1/2"-20UNF x 45mm, knurled
Ø12.5x10mm long – **AHWS12-20UNFX45** \$8.36 + GST



Axle castle head nut to suit 2.75 ton axle **AHACN2.75**
\$10.03 + GST

Bin Runner - Wheels



Rim 14x5 black HOLDEN HT(before SN 11048) -
TRR14X5



Rim 14x6 FORD white (after SN 11048) - **TRR14X6WCH**
Tyre 215/75Dx14 8PR – **TRT215X75X14-8P**



Tyre 25x10.00x12 8 ply AT Twill, load rated 1300kg each –
TRT25x10-12-8PR

Bin Runner - Wheels



Wheel complete Tyre & Rim, 620mm Ø x 300mm wide x
12 ply, load 1200 kg each, (from 2018); Rim 12" x 8.5"
ford PCD, +15mm offset, hot dip galvanised fitted with
Tyre 26x12.00x12 12 ply – **TRW26X12x12PRT** \$261.73 +
GST de



tyre 620mm Ø x 300mm wide x 12 ply, load 1200kg each,
(from 2018) **TRT26X12X12-12P** \$190.99 + GST de



Tube 26x1200x12 (TR13) - **TRTU26X1200X12**



Rim Ø12" x 8.5", PCD 5 x 114, centre plate 8mm, offset
+15mm, hot dip Galv (2018 on)
- **TRR8.5x12HDG** \$74.47 + GST de

Bin Runner - Bearings



Bearing 1-3/4" UC209-28S - **BUC209-28CH**



Bearing 45mm UC209 - **BUC209**



Bearing Hsg Flange FL209 2hole - **BFL209CH**

Bin Runner - Bearings



Bearing for rear idler 52ODx20IDx15W (before SN 08038) – **B6304.2RS**

Bearing for rear idler 52ODx25IDx15 (after S/N 08038) – **B6205-2RSCH**

Bin Runner – Rear chain Idler



Chain idler pin 20mm (before SN 08038) – **ZBRCIP20***
Rear idler complete 25mm bearing (after SN 08038) – **ZBRRIC25***



Rear Chain idler machined one piece, 70mm wide, with 4 off 25x52mm sealed ball bearings, (after mid 2021) – **ZBRRIC1P2570** \$100.32 + GST df



Rear Chain idler machined one piece, 65mm wide, with 4 off 25x52mm sealed ball bearings, (up to mid-2021) – **ZBRRIC1P2565** \$100.32 + GST df

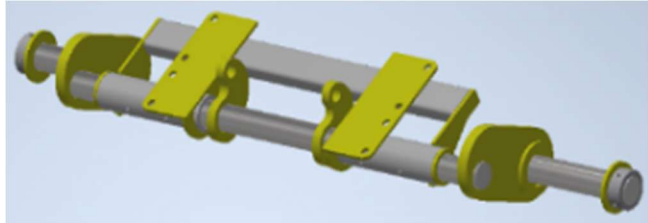


Chain idler pin 20mm (before SN 08038) – **ZBRCIP20***
Chain idler pin 25mm (after SN 08038) – **ZBRCIP25***
\$14.63+ GST df

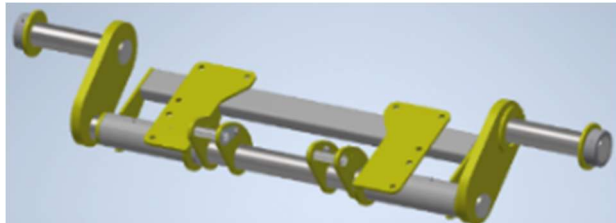
Bin Runner – Rear Crank Axle Assembly



Bin Runner crank axle Ø75mm end shafts, Ø2.25" mid shaft with Ø24mm tie rod. - **ZBR5C2014**

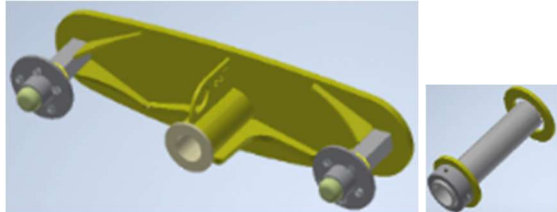


Bin Runner crank axle Ø75mm end shafts, Ø75mm mid shaft, single ram bracket, upgrade for older Bin Runners (up to 2021) - **ZBR5C75UG** \$1,911.26 + GST

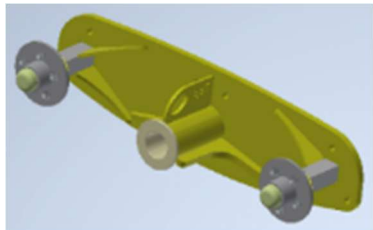


Bin Runner crank axle Ø75mm end shafts, Ø75mm mid shaft, double ram bracket (from 2021) - **ZBR5C7521** \$1,911.26 + GST

Bin Runner – Rocker wheel Assembly

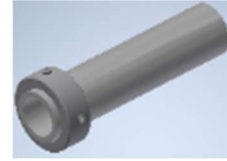


Bin Runner bogie rocker up-grade on older Ø2¼" end shafts, also includes Ø75mm end shaft collar to slide over old Ø2¼" & Ø2" shafts, has big 75mm HDPE bushes, 2.75-ton ford hubs to suit the bigger 14" tyres, not for mudguards, each, 2 required. (up to 2015)– **ZBRBR75UG** \$1,230.59 + GST



Bin Runner bogie rocker up-grade on older Ø2¼" end shafts, has big 75mm HDPE bushes, 2.75-ton ford hubs to suit the 26x1200x12" tyres, for mudguards, each, 2 required. (up to 2015) – **ZBRBR75MG** \$1,230.59 + GST

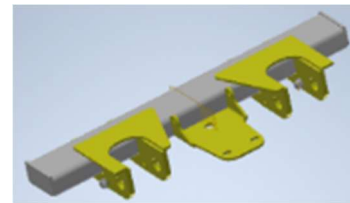
Bin Runner – Rocker wheel Assembly



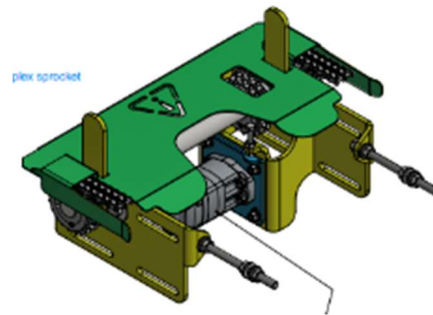
Ø75mm end shaft collar to slide over old Ø2¼" & Ø2" shafts, (this is welded over the old 2.25" shaft) includes Ø75mm end shaft collar. (up to 2015) each – **ZBRBR75SUG** \$40.13 + GST



Bin runner rocker wheel pivot up-grade on older Ø2¼" end shafts, bush Ø114 x 11 wall x 300 long with grease nipple in, sleeve Ø75mm outside-Ø2.25" inside x 350mm long, (this is welded over the old 2.25" shaft) includes 2 x Nylon bush (140 Flange 75id x92od) & steel collar ID Ø75mm x 40 long colour – **XCWPA75*** \$236.34 + GST

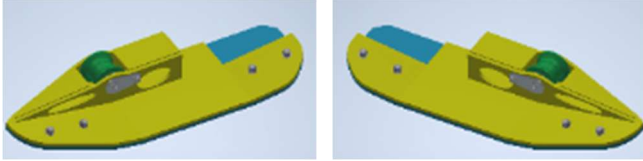


Crank axle ram base frame, shot blasted & painted – **ZBRBCARBF** \$397.94 + GST

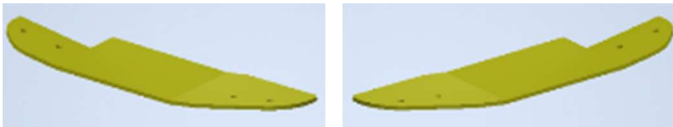


Bin Runner front drive assembly including, hyd motor, drive axle, all sprockets, duplex chain from motor to drive axle, all bolts, chain guard, shot blasted & painted (from 2021) - **ZBRFDACOMPLETE** \$2045.86 + GST

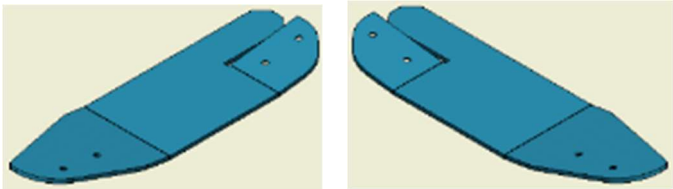
Bin Runner - Components



Rear end pick-up complete, including bottom wear plate, idler & pin, counter sunk bolts, shot blasted & painted, one set, right hand & left hand – **ZBRREPUCL+R** \$682.18 + GST



Rear end pick-up bottom plate that the wear plate bolts on to, painted, one set, right hand & left hand – **ZBRREPUBSBL+R** \$...... + GST



Rear end pick-up bottom skid, including counter sunk bolts, shot blasted & painted, one set, right hand & left hand – **ZBRREPUBSL+R** \$115.37 + GST

Bin Runner - Bushes



Bush, Nylon white 65od x 58.2id x 58 long (after SN 08038) – **NB214CH** \$29.45 + GST

Bush, Nylon white 63.4od x 58.2id x 65 long (before SN 08038) – **NB634-581-65** \$39.45 + GST



Nylon bush for Ø75mm shaft 140 Flange x 76id x 92od 120mm long – **NBF140*92.1X80** (from 2014) \$22.25 + GST



Bush Bronze 1"x1.5"x1" - **BB1.5ODX1IDX1*** \$19.94 + GST



Bin Runner rocker axil steel collar (from 2014) Ø75mm x 40 long shaft, 4 x 12mm grub screws – **SC110X75X40**



Bin Runner side guide up rights 25 pipe with 24 rod in centre - **ZBRSA***



Jack HD implement 2270 kg (long) – **BCB6696**

Bin Runner -



Bin latch return spring 250x450dx6 – **ZBSS**



Wire rope grip 5mm Galv – **WRG05**

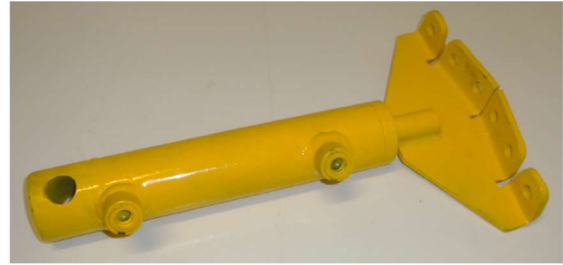


Wire rope galv 6mm 7x19 construction – **WRGAL06-7X19**



Hyd hose mount on front of drawbar – **ZBRHHOFOD** \$63.33
+ GST

Bin Runner – Hydraulic Rams - FH



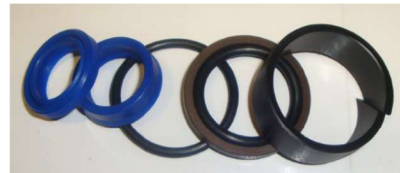
Bin latch Ram 100x40x20 after mid 2021 – **RCHBRFH100X40X20**



Seal kit for bin latch ram 40x20 – **RCHSKFH40X20** \$59.99
+ GST



Crank axil Ram 230x63x32, has bronze bush both ends,
for 30mm pins after mid 2021 – **RCHBRFH230X63X32**
\$325.91 + GST



Seal kit for Crank axle ram 63x32 – **RCHSKFH63X32**
\$88.45 + GST



Ram pin for (230x65 ram) Ø30x 100 grip length (after mid
2021) – **ZBRRP30x100** \$16.72 + GST

Hydraulic Rams – Tiantong

10,000 psi seals, nylon wear rings, industrial quality



Hydraulic 8"x2.5" p/rod 1.25" (203 x 63x32) – **RCHM8X63X32** \$251.91 + GST



Seal kit for 10x2x1" – **RCHSK2X1**

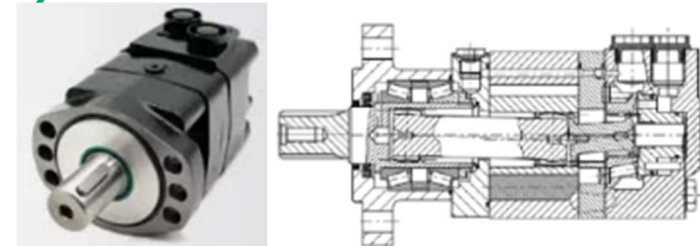
Seal kit for 8x2.5, 12x2.5x1.25" – **RCHSK2.5X1.25**

Hydraulic Rams – Baker parts pre 2008



Seal Kit 2.5"BX1.25" BAKER - **RBSK2.5X1.25**

Hydraulic Motors – BMSY Taizhou



Motors for Bin Runner from 2023

(This is what we use now has- 3,600 psi (250 bar) shaft seals, 2 heavy tapered bearings, very low internal leakage, (very high performance)

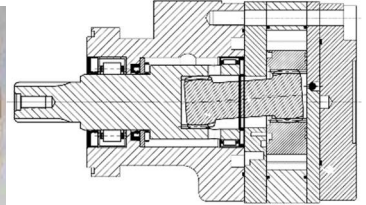
With Ø1 1/4" straight shaft, 200cc, 7/8" UNO ports, 6 bolt flange, 250 bar shaft seal, big tapered bearings, disk drive valve plate – **MHCBMSY2004B125** \$645.52 + GST

With Ø1 1/4" straight shaft, 250cc, 7/8" UNO ports, 6 bolt flange, 250 bar shaft seal, big tapered bearings, disk drive valve plate – **MHCBMSY2504B125** \$695.95 + GST



Seal kit for BMSY hydraulic motor, high pressure shaft seal size 48x48x4.7– **MHCBMSYSK250** \$73.00 + GST

Bin Runner - TPF BMER-2 Hydraulic motor



From late 2019 to 2022

(2,500 psi shaft seals, 4 heavy shaft bearings, very low internal leakage, high performance) With 1 1/4" shaft, 7/8" UNO ports, large 6 bolt flange, 250cc, 200 bar shaft seal - **MHCBMER250MSRW**

E

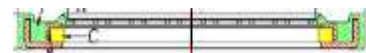
Hydraulic Motors seal kit – TPF BMER-2



Seal kit for BMER-2 hydraulic motor, rated to 200 bar – **MHCBMER2-SK**

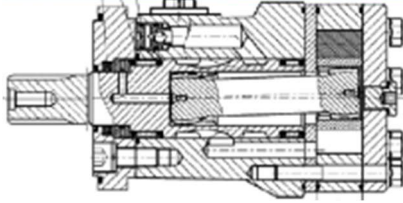


Shaft seal HP BMER-2 hydraulic motor rated to 200 bar, 35 id x 48 od x 4.72 wide – **MHCBMER2SS200**



Shaft seal HP BMER-2 hydraulic motor special made rated to 300 bar, 35 id x 48 od x 4.72 wide – **MHCBMER2SS300**

Bin Runner - TPF BMRS Hydraulic motor



Hyd motor 250cc 15ci BMRS250 2BF/1"/1¼K/7/8U/200
(From 1995 to 2018)
–MHCBMRS2502B1S



Shaft seal HP BMRS hyd motor 28.56×39x5.5 –
MHCBMRSPPSS



Dust seal HP for BMRS hyd motor – **MHCBMRSDDS**



Shaft bearing kit for BMRS hyd motor - **MHCBMRSSB**

Bin Runner Stickers



sticker BIN RUNNER Logo – **DSBINRUNLOG**



sticker MADE BY CRENDON 238x79 –
DSCRENMACMADEBY



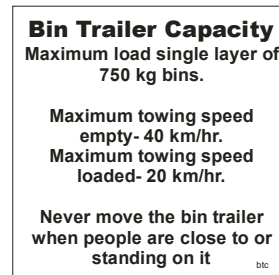
sticker SAFETY Read Owner's Manual – **DSSAFETYMAN**



sticker Keep clear of all moving parts – **DSDANGER**



sticker Grease Weekly – **DSGREWEE**



sticker Bin Trailer capacity - **DSBTC**

2 & 3 Bin Trailer

Hubs & Axles 1.5t (after 2010)



Hub/axle assy (5x1/2UNF-114.3PCD 2"x12SQ) –
(after SN 11048) - **AHA5X12+2X12**



Whl brg set, seal FORD for hub/stub (after SN 11048) –
BTWSF*



Dust Cap for 2"x12" axle CH – **AHDCCH**



Wheel Stud & nut 1/2"-20UNFx40mm –
AHWS12-20UNF



Conical spring washer used to stop wheel nuts coming loose
– **BWCS1/2**

Hubs & Axles 1t pre 2010



Stub Axle 8"x39mm rnd nut/wsh/pin - **AHAS8X39RND**
Stub Axle 12"x40mm SQUARE nut/wsh/pin -
AHAS12X40SQ



Whl brg set std Holden Lge & sml cup/cone, oil seal –
BTWSH



Dust Cap std HT 1 3/4" – **AHDCHT**



Wheel Nut 7/16" 60° (HT HOLDEN) - **AHWNHT7/16**
Wheel Stud 0.437x1.5 (HT HOLDEN) - **AHWS.437X1.5**



Rim 14x5 black HOLDEN HT (before 2010) -
TRR14X5



Rim 14x6 RANGER white Falcon - **TRR14X6WCH**
Tyre 215/75Dx14 8PR - **TRT215X75X14-8P**



Front wheel 16-650-8" 30mm centre air free – **ZVS8**
Front wheel seal protector 30mm centre wheel –
BWZFM27X60X30X4



Jack Low Impl 2250kg (short) – **BCB8696**

2 & 3 Bin Trailer - Stickers



sticker MADE BY CRENDON 238x79 – **DSCRENMACEBY**



sticker SAFETY Read Owner's Manual – **DSSAFETYMAN**



sticker Keep clear of all moving parts – **DSDANGER**



sticker Grease Weekly – **DSGREWEE**

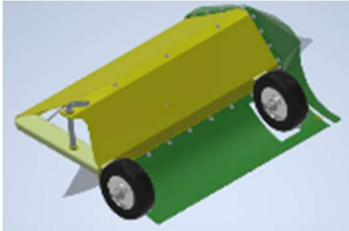


sticker Bin Trailer capacity - **DSBTC**

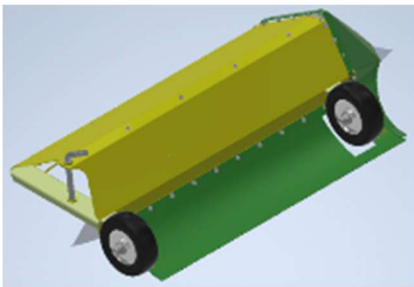
Weedicide Boom Spray Parts (new Model from 2017)



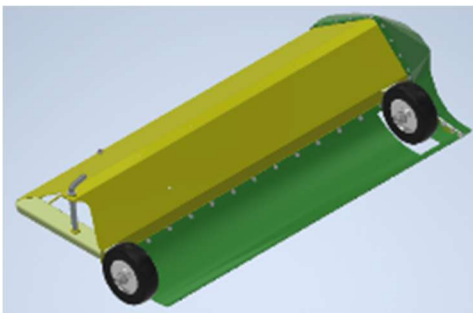
650mm Weed boom head complete with: Spray jets, wheels & pivot pin as pictured – **ZWB650HWJ*** \$1088.00 + GST



900mm Weed boom head complete with: Spray jets, wheels & pivot pin as pictured – **ZWB900HWJ*** \$1211.00 + GST

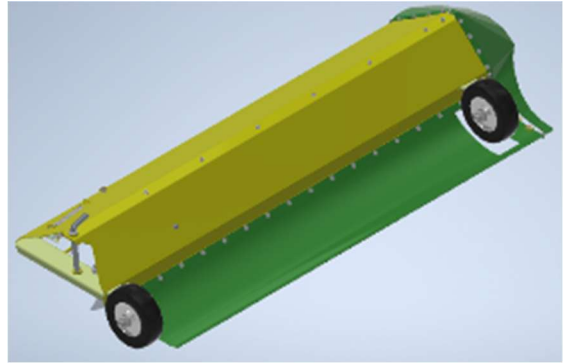


1200mm Weed boom head complete with: Spray jets, wheels & pivot pin as pictured – **ZWB1200HWJ*** \$1334.00 + GST

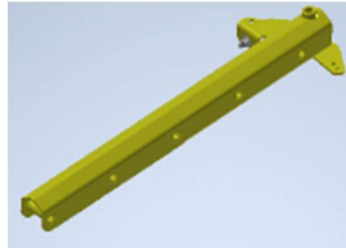


1500mm Weed boom head complete with: Spray jets, wheels & pivot pin as pictured – **ZWB1500HWJ*** \$1457.00 + GST

Weedicide Boom Spray Parts (new Model from 2017)



1800mm Weed boom head complete with: Spray jets, wheels & pivot pin as pictured – **ZWB1800HWJ*** \$1564.00 + GST



Weed boom extending arm; no pins – **ZWBSEA*** \$489.00 + GST



Gas strut stainless steel 700N; 375 open lengths; 150 stroke – **GST700N-375SS** \$79.14 + GST



Boom spray head spring 200 long x 40id x 6 spring wire – **ZBSSCH*** \$18.41 + GST



Boom spray head Pin Ø20x165 effective length – **ZBSP20x100** \$..... + GST



Weed boom ram, 63 piston, 30 push rod, for 20 pins, push boss 75 long, base boss 125 long – **ZWBLR** \$458.00 + GST

Weedicide Boom Spray (old Model pre 2017)



Nozzle assy 1/2" SLIVAN AR200 (4pk) - **SPNAR200**



Spray nozzle ALBUZ 110° fan (green) ADI110015 - **SPNJETAIR015**



strainer 100 mesh
SPNS8079 – **SPNS**



Nylon TEEJET cap 1/4" CP8027-NYB- **NFTC1/4**



Nylon TEEJET single swivel body 1/4" 8600-1/4-TNYB
NFTSB1/4



Tip throw end OC-02 - **SPNOC-02**



Non-drip nozzle strainer ball check 100 mesh
4193A-PP10100SS – **SPNS**

Weedicide Boom Spray (new Model from 2017)



Nozzle assembly for Ø 20mm stainless steel tube,
included, filter, yellow nozzle, non-drip diaphragm, each –
WBJASSTY
\$20.95 + GST



green nozzle each – **WBJASSGN**



Nozzle assy for stainless steel tube, included, filter, green
nozzle, non drip diaphragm, Lechler 102A-20 each –
WBJASST

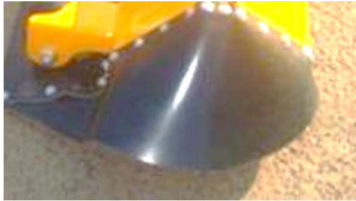


Nozzle assy for stainless steel tube, included, filter, brass
half nozzle, non drip diaphragm, Lechler 102A-20 each –
WBJASSTHN

Weedicide Boom Spray (new Model from 2017)



Vinyl Rear belting Skirt 3 ply 220mm x 900 or 1200 or 1500
– **ZBSCSN***



End Cover Weed Boom Spray – **ZBSCEN***



Rear Air free wheel, aluminium rim 220 OD with 6204.2RS
heavy bearings & grease nipple, no axil bolt, (from 2019) –
ZWBSW210x60



Rear Air free wheel, aluminium rim 220 OD with 20 x
140mm bolt axle with 6204.2RS heavy bearings & grease
nipple (from 2019) – **ZWBSWA210x60**

Weedicide Boom Spray (old Model pre 2017)

Old model



Spray Mnt Brkt 2001 onwd Weed Boom – **ZBSB**



Bracket Pin Weed Boom Spray – **ZBSBP***



End Cover Weed Boom Spray – **ZBSCE***

Weedicide Boom Spray (old Model pre 2017)



Rear PVC Wheel 125 OD centre hole 12mm (up to 2018)
– **WCPVC5*234*58***

Weedicide Boom Spray All



sticker MADE BY CRENDON 238x79 – **DSCRENMACMADEBY**



sticker SAFETY Read Owners Manual – **DSSAFETYMAN**



sticker Keep clear of all moving parts – **DSDANGER**



Crendon Weedicide Boom Spray Rates <small>use as a guide only</small>								
Nozzle Colour ISO	Pressure	Litres for 1 nozzle	Litres for 4 nozzles 900 boom	Litres for 5 nozzles 1200 boom	Litres for 6 nozzles 1500 boom	L/Ha at 4 km/h	L/Ha at 5 km/h	L/Ha at 6 km/h
Green	1.5 bar	0.684	2.736	3.42	4.104	250	204	170
	1.75 bar	0.739	2.944	3.695	4.416	280	220	184
	2 bar	0.790	3.160	3.950	4.740	310	236	198

sticker Crendon weedicide Boom – **SWBSR**

OliNet

Net only for 4m OliNet - **ZOT4**

Net only for 5.5m OliNet - **ZOT55**

Net only for 6.5m OliNet - **ZOT65**



Net complete with shock cord 4m OliNet - **ZOT4C**

Net complete with shock cord 5.5m OliNet - **ZOT55C**

Net complete with shock cord 6.5m OliNet - **ZOT65C**



Gas strut 500N-375 – **GST400N375**



Wheel 400x8x4PR DMD wheel 1" – **TRW400X8X4XPR**



Wheel 16-650-8" 30mm centre with 6006.2RS bearing –
TRW16/650/8-8CH (used after 2012)



Wheel 16-650-8" 25mm centre with 6205.2RS bearing
125mm long hub with tube Ø425, width 165mm–
TRW16x650x8-125 (used after 2020)

OliNet



Handle grip 3¼" (83mm) x ¾" bore black – **PVCHG34**



Crate PVC AP5000BK Icon Black – **PVCCRREC**



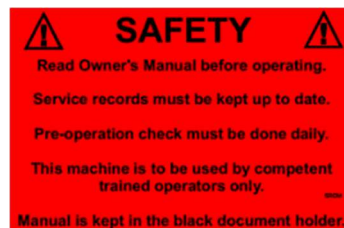
Tube vented blue plastic 560x395x240 – **ZOTP**



sticker OLINET logo – **DSOLINET**



sticker MADE BY CRENDON 238x79 –
DSCRENMACMADEBY



sticker SAFETY Read Owner's Manual – **DSSAFETYMAN**



sticker Keep clear of all moving parts – **DSDANGER**

Trel-Pick

Tarp PVC for Trel-Pick canopy – **ZTPT**

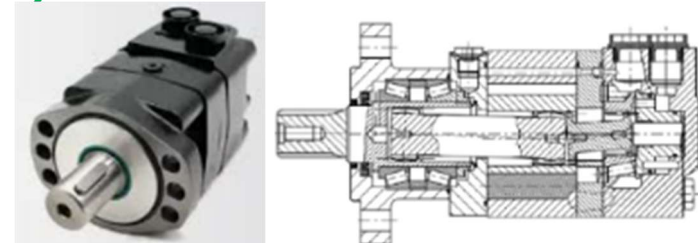


Hydrostatic pump - **PHPV15**



Fail safe brake Ø 1.25" male – female **AHFSBC** \$522.56 + GST

Hydraulic Motors – BMSY Taizhou



Motors for Bin Runner from 2023

(This is what we use now has- 3,600 psi (250 bar) shaft seals, 2 heavy tapered bearings, very low internal leakage, (very high performance)

With Ø1 1/4" straight shaft, 125cc, 7/8" UNO ports, 6 bolt flange, 250 bar shaft seal, big tapered bearings, disk drive valve plate – **MHCBMSY1256BP** \$614.78 + GST

White RE series



Seal Kit WHITE RE (Short) – **MWRESKS**

Seal Kit WHITE RE (Full) – **MWRESKF**

Hydraulic Rams - Baker



Ram 8"x2.5" Apex II – **RB08X02.5**



Seal Kit 2.5"BX1.25" BAKER (3.8 s/s) - **RBSK2.5X1.25**



Filter hyd Element only PRINCE FB10 - **FHFB10**



Filter head & element PRINCE (sml) - **FHFA1200-10**

Throttle assembly – **ZTPTA***



Pulley SPB 100x1 TaperFix 1610 – **PTL100X1B-1610C**

Pulley SPB 100x2 TaperFix 1610 – **PTL100X2B-1610C**

Pulley SPA 112x2 TaperFix 1610 (4.5"x2A) – **PTL112X2-1610**

Pulley SPB 112x2 TaperFix 1610 (4.5"x2B) - **PTL112X2B-1610**

Bush, TaperFix 1008-1" – **PTLB1008-1**

Bush, TaperFix 1108-1" – **PTLB1108-1**

Electrics Switches



Push button switch plastic SPST latching – **ESPB319.348**

Push button switch plastic SPST non-latching – **ESPB319.332**



Push button cover clear - **ESPBCC266-1887**

Push button cap red – **ESPB319-376**

Push button cap green – **ESPBCG319-382**



Push button switch GREEN silicone boot –
ESPBG-XB2-BP35



Push button switch RED E/Stop – **ESPBR-XB2-BS545**



Switch box assy GREY – **ESPBBG***



Hour Meter/Tacho HM02 red CH - **HMLH006**



Fuse holder suit 5mm blade fuse – **EGFHBFS3**



Fuse blade 25 Amp - **EGFB25A**

Electrics Terminals



Elect. cable joiner 2.5-3mm red - **ETN56154**

Or Hella 8530

Elect. cable joiner 2.5-3mm blue - **ETN56156**

Or Hella 8531

Elect. cable joiner 2.5-3mm yellow - **ETN56158**

Or Hella 8532



Elect Term 6.3mm red - **ETN56142**

Or Hella 8504 **ELECT TERM 6.3MM - BLUE 100pkt**

Elect Term 6.3mm blue - **ETN56144**

Or Hella 8505

Elect Term 6.3mm yellow - **ETN56145**

Or Hella 8502



Open spade term 4.3mm blue – **ETACX3045**

Open spade term 5.3mm yellow – **ETACX3047**



Ring term 3mm wire red - **ETN56172**

Ring term 4mm wire blue – **ETN56180**

Ring term 8.4mm wire yellow – **ETN56090**

Electrics Terminals



Cable Lug 5/16 10-8 8B&S ACX0101 – **BACL5/16**



Battery terminal (brass) Neg – blk - **BTBNTB**

Battery terminal (brass) Pos – Red - **BTBPTR**

Electrics Wire



Auto cable 5 Core 2.5/3mm Blk – **EWCAM1-109-100**



Battery cable small 8B&S blk - **EWBC8BSB**

Battery cable small 8B&S red - **EWBC8BSR**

Fuel Tank & Fittings



Fuel Tank 23 lt portable (Poly) – **FT14513**



Fuel Hose Fitting (OMC-JPW2440) - **FT14503**

Tank/Eng Conn (F) 8mm plast OMC- **FT2197**



Fuel Tank Fitting OMC – **FT14508**



Fuel Hose Fitting (SUZUKI-JPW2442) – **FT14504S**



Fuel Tank adaptor (SUZUKI-JPW2577) – **FT145096S**



Fuel Hose Fitting (Merc/Mariner JPW2444) – **FT2444FTF**



Fuel Tank adaptor straight (M/M-JPW2448) – **FT2448FTA**

Air Compressors 13 CFM 2 cyl (Crendon Dafeng)

***Parts for 12.9cfm single stage TB30
13.8cfm 2cyl single stage TH-30A
13cfm, 2cyl single stage ZL2065H***



Gasket cyl head (7) TB30– **CCTB3007**



Gasket valve assy/cylinder (8) TB30 – **CCTB3008**



Gasket valve plate (9) TB30– **CCTB3009**



Valve plate (10) TB30– **CCTB3010**



Gasket valve seat (11) TB30 – **CCTB3011**



Gasket lower cylinder (16) TB30– **CCTB3016**



Ring set - piston (17) TB-30– **CCTB3017**



Unloading valve (18) TB-30– **CCTB3018**

Air Compressors Parts – (Nova)



13cfm Nova FV30 2cyl 10½" f/w – **CFV30**

Not available

Air Compressors 13 CFM 2 cyl (Crendon Dafeng)



Elbow - Unloader valve (19) TB-30 – **CCTB3019**



Tee - Unloader valve (27) TB-30– **CCTB3027**



Gasket (39) TB-30 – **CCTB3039**



Flywheel 10.5" B section - **CCZFW10.5B**



Pressure gauge 200PSI 63mm dial – **GGPC200PSI**



Pilot valve P25 1/4 in x 1/8 out picture right –
AFPV1/4X1/8



Air relief valve 1/4" **VARC1/4-150**

Engine Parts Vanguard –Filters



Air Cleaner Cartridge rnd 12.5-16hp – **EV394018S**
Air Cleaner Cartridge rnd 20hp – **EV692519**



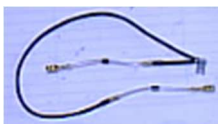
Pre-cleaner rnd foam filter – **EV272490S**
Pre-cleaner rnd foam filter – **EV692520**



Oil filter – **EV491056**
Oil filter short 2.25" – **EV492932S**



Filter, fuel for 1/4 & 5/16" pipe 60 micron - **FF06**



Diode (ground wire) – **EV692319**



Spark plug NGK BCPR5ES – **SPBCPR5ES**



Ignition switch assembly 6 terminals with 2 keys -
EV692318



Ignition switch assembly 5 terminals with 2 keys - **KSIR**



Coil (Armature Magneto) 12.5/16hp – **EV492341**



Rectifier (Voltage Regulator) - **EV691185**



Solenoid starter 14hp – **EV825418**

Engine Parts Vanguard mufflers



Exhaust Hi-Mount O/F side (300G) – **EV691562**



Exhaust gskt 12.5-14hp - **EV691613**



Exhaust gskt 20hp – **EV806425**

Engine Parts Vanguard others



Grip starter – **EV490652**
Rope, start 1.5m – **RS***



Fuel pump v-twin – **EV692026**



Drive Starter kit steel r/gear only – **EV496881**



Rocker Cover gskt 12.5-20hp - **EV806039S**

Trel-Pick



sticker MADE BY CRENDON 238x79 – **DSCRENMACMADEBY**



sticker SAFETY Read Owners Manual – **DSSAFETYMAN**



sticker Keep clear of all moving parts – **DSDANGER**



sticker MADE BY CRENDON 238x79 – **DSCRENMACMADEBY**



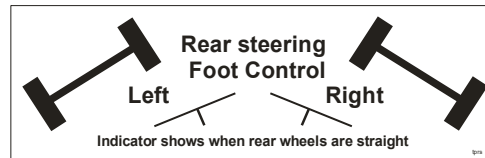
sticker Grease Daily – **DSGREDAI**



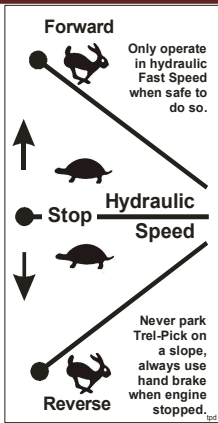
sticker Grease Weekly – **DSGREWEE**



sticker Grease Monthly – **DSGREMON**



sticker TrelPick rear steering – **DSTPRS**



sticker TrelPick drive – **DSTPD**



sticker TrelPick platform height – **DSTPPH**



sticker TrelPick throttle – **DSTPT**

Trel-Pick Operator Safety Instructions

These Safety Instructions are to be conveyed to anyone who will operate this TREL-PICK.

Daily visual service checks	Operating
<ul style="list-style-type: none">● Check engine & compressor oil level● Visually check compressor V belt condition & tension & drain air tank etc● Visually check air, hydraulic & fuel system for leaks● Visually check the tyre pressures & tyre condition● Check the platform controls for function etc● Visually check the platform for and clear any debris so that there are no tipping hazards & that gate systems all function fully etc● Visually check the Trel-Pick frame for loose/missing parts, cracks & structure free from distortion etc● Visually check the work area for operational hazards (eg. Slope, power lines, pot holes, debris etc)● Visually check the picking bag/pruning tools etc (if applicable)● Ensure that the machine is maintained in a safe working order.	<ol style="list-style-type: none">To start: Engine start/stop button is beneath the steering wheel and the engine must be turned on (choke will be required if engine is cold). The Stop/Emergency stop button needs to be reset each time before restarting.To drive the Trel-Pick: Push the hydrostatic lever to the required direction & the hydraulic speed will respond proportionally. Operate in Fast Speed only when it is safe to do so.The throttle is beneath the steering wheel. Operate in Fast Speed only when it is safe to do so.Always apply the handbrake firmly when the engine is not running.Rear steering is foot activated by the hydraulic control on the floor below the steering wheel. We recommend using this for the purpose of crabbing the machine for easy positioning of the rear platforms. An indicator is sited above the rear right hand wheel.Do not enter or exit the Trel-Pick while it is moving.Fuel - use unleaded petrol only.Ensure that the Trel-Pick platform gates are closed at all times.Do not park the Trel-Pick on steep slopes.Both raised platforms slide in & out. Tighten with bolt after positioning.Both raised platforms can be raised & lowered by (1) loosening the tightening bolt (2) lift platform with 2 workers (3) re-pin height stop pins to required height (4) retighten tightening bolts (Caution keep feet clear of bottom step)When loading or unloading bins: (1) ensure that it is done on flat smooth ground conditions (2) unlatch the appropriate handrail sides & swing down to allow fork-lift access (3) Ensure that all other platform workers are kept a safe distance away during this operation (4) When loading/unloading has been completed, swing the gate up again and hold up with both latches.

Safety Limits

1. Safe Working Load per raised platform is 200kg (including operator, tools & picking bag of fruit).
2. Safe Working Load for main platform is 2 tonne.
3. Maximum operating slope is 15°.
4. Bin trailers to a maximum of 1 tonne can be towed behind the Trel-Pick
5. Operate in Fast Speed only when safe to do so.
6. Keep a safe distance away from power lines
7. Do not carry any loads outside the platforms other than the picking bag and picking trays provided.

Only allow a competent trained operator to use the Trel-Pick.

sticker TrelPick operator instructions - **DSTPOSI**

Power Wire Winder

Lower half wire jenny spool – **ZWWLHWJS***



PTO Shaft 60cm Closed SERIES 1 – **BCAB1060**



Handle Grip 1-3/8" PVC HG1 – **PVCHG1.14**



Hub/axle assy (5x1/2UNF-114.3PCD 2"x12SQ) –
AHA5X12+2X12



Whl brg set, seal FORD for hub/stub (after 2010) –
BTWSF*



Dust Cap for 2"x12" axle CH – **AHDCCH**



Wheel Stud & nut 1/2"-20UNFx40mm –
AHWS12-20UNF

Hubs & Axles 1t pre 2010



Stub Axle 8"x39mm rnd nut/wsh/pin - **AHAS8X39RND**

Stub Axle 12"x40mm SQUARE nut/wsh/pin -



Whl brg set std Holden Lge & sml cup/cone, oil seal –
BTWSH



Dust Cap std HT 1 3/4" – **AHDCHT**



Wheel Nut 7/16" 60° (HT HOLDEN) - **AHWNHT7/16**

Wheel Stud 0.437x1.5 (HT HOLDEN) - **AHWS.437X1.5**



Rim 14x5 black HOLDEN HT (before 2010) -
TRR14X5



Rim 14x6 RANGER white Falcon - **TRR14X6WCH**
Tyre 215/75Dx14 8PR - **TRT215X75X14-8P**



sticker MADE BY CRENDON 238x79 –
DSCRENMACMADEBY



sticker SAFETY Read Owners Manual – **DSSAFETYMAN**



sticker Keep clear of all moving parts – **DSDANGER**

ROCK DIGGER



Rubber roller 3.5" sgl brg flangeless – **WBRRSB03.5FL**



Rubber roller 4" dble brg flangeless – **WBRRDB04FL**



Rubber roller 4" dble brg flanged – **WBRRDB04F**



Steel roller 4" dble brg flangeless – **WBRSDB04FL**



Steel roller 4" dble brg flanged – **WBRSDB04F**

ROCK DIGGER



1" BS Sprockets

Sprocket 12T x 1"BS, 2"bore, 1/4"Key, 2 grub - **SM12TX1B2***

Sprocket 25T x 1"BS, 2"bore - **SM25TX01x02IN**

Sprocket 37T x 1"BS, 2"bore - **SM37TX01B02IN**

1-1/4" BS Sprockets

Sprocket 9T x 1 1/4" BS, 52mm bore – **SM09TX1.14B52***

Sprocket 11T x 1 1/4" BS, 1 3/4"bore – **SM11TX1.14XB2***

Sprocket 21T x 1 1/4" BS, 2"bore – **SM21TX1.14XB2***



Chain Transmission 1"BS(16B) – **CT01**

Chain Transmission 1 1/4" BS(20B) – **CT1-1/420B**



Con link 1"BS(16BCL) – **CTCL01**

Con link 1 1/4" BS(20BCL) – **CTCL1-1/4**



Half link 1"BS(16BHL) – **CTHL01**

Half link 1 1/4" BS(20BHL) – **CTHL1-1/4**

ROCK DIGGER



Special cast iron split sprocket 22T – **WBSS22T**
Special cast iron split hub for 22T sprkt – **WBSSH**
Special cast iron split sprocket 22T with hub & bolts – **WBSS**



Drive sprocket 22Tx40pitch, 20mm pl, 2 B with s/rings – **WBMD22T40P2BIRN**



Belt: riveted bar conveyor 4 belt, 40 pitch, hi-profile, 250 12mm bars 1500 wide – **WBRBC4BELRD**



Traction belt 40 pitch hi-profile – **WBHP40P**



Joining bar 12mm (4 belt) – **WBBAR12MM4BELT**



Back plate – **WBBP**



Centre clip 12mm – **WBCC12MM**

ROCK DIGGER



Socket head c/sunk capscrew 1/4x1" – **BSHCCBSW1/4X1**
Socket head c/sunk capscrew 1/4x1 1/4" – **BSHCCBSW1/4X1.14**

Socket head c/sunk capscrew M5X25 – **BSHCCM5X25**
Socket head c/sunk capscrew M5X30 – **BSHCCM5X30**
Socket head c/sunk capscrew M5X40 – **BSHCCM5X40**



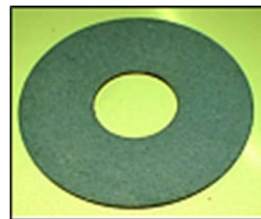
Nyloc Nut ZP BSW 1/4" – **BNNBSW01/4**
Nyloc Nut ZP M5 – **BNNM5**



Wheel nut 18x1.5 (70L-8-18 axle) – **AHWNA70813**
Wheel stud 18x1.5 (70L-8-18 axle) – **AHWSA70813**



PTO safety clutch 3/8x6spline M/F 6" 40hp – **BCB4164**



Clutch plate friction disc 5"ODx3/4"ID – **BCB4165**

ROCK DIGGER



Shear bolt yoke Series 4 – **BCAK421000**



Spline clamp yoke 1-3/8 Series 6 – **BCA622538**



Tube Yoke Inner – **BCA6245**



Unicross Series 4 – **BCA421**

Unicross Series 6 – **BCA622**



PTO shaft 1m 1-3/8 QR ends S4 – **BCAB4105**

PTO shaft 1.5m 6Spl QR ends S4 – **BCAB4150**

PTO Shaft 1.5m no yoke Series S4 – **BCEB4150**



PTO Inner triangular tube 3m S4 – **BCA364X3**

PTO Outer triangular tube S4 – **BCA433**

Yoke tube inner Series 6 – **BCA6245**



Spline Shaft 1-3/8x6spline x 3m – **BCB7283**

Splined shaft cut ground, keyed 0.45m long – **ZRDHDSS***



Splined sleeve 1-3/8x6 – **BCB7287**

ROCK DIGGER

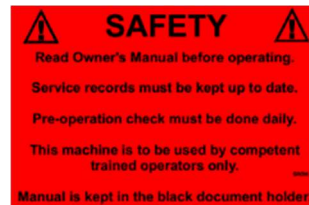


Roll pin 5/16x3 – **RP5/16X3**

Roll pin 1/2x3 – **RP1/2X3**



sticker MADE BY CRENDON 238x79 –
DSCRENMACMADEBY



sticker SAFETY Read Owners Manual – **DSSAFETYMAN**



sticker Keep clear of all moving parts – **DSDANGER**

RAMMER



Wire Rope Std RAMMER 6m x 8mm – **ZRWR6**
Wire Rope for extension 7.5m x 8mm – **ZRWR8**



Rubber mount M174 – **RBM174-60**
Not Available



V belt B38 – **VBB38**
Not Available



Pulley CI 6"x2B Ø1"; ¼key 2grubs – **PCI6X2B1B** **Not Available**
Pulley CI 8"x2B Ø1"; ¼key 2grubs – **PCI8X2B1B** **Not Available**



Wire rope sheave 100mm x 52mm x 17mm – **PWRS100X52X17** **Not Available**
Wire rope sheave 6"x52mm x 25mm wide – **PWR6X52X20**
Not Available



Post latch – **ZRPOSTLATCH** **Not Available**



Post latch spring – **ZRHPLS***



Motor spring – **ZRHPMS***

RAMMER

Hydraulic Motors Parts - White RS series



Seal Kit WHITE RS (Short) picture left – **MWRSSKS**
Seal Kit WHITE RS (Full) picture right – **MWRSSKF**



Thrust Bearing WHITE HS/RS – **MWRSTB**



sticker MADE BY CRENDON 238x79 – **DSCRENMACEBY**



sticker SAFETY Read Owners Manual – **DSSAFETYMAN**



sticker Keep clear of all moving parts – **DSDANGER**



sticker RAMMER logo – **DSRAMLOG592X118**



sticker RAMMER Instructions – **DSRAMINS265X190**